

**Marina Coast Water District**

**Ord Community Water & Wastewater  
RUWAP**

**DRAFT BUDGET  
FY 2019-2020**

**March 13, 2019**



## TABLE OF CONTENTS

Budget Calendar	2
Budget Summary Note	3-8
Summary of Rates, Fees and Charges	9-10
District Budget Summary and Comparison Reports, Graphs	11-14
District Operating Budget	
Revenue	15-17
Administration	18-26
Operations & Maintenance	27-32
Laboratory	33
Conservation	34
Engineering	35-38
Water Resources	39
District Capitalized Equipment	40
District Annual Capital Improvement Budget	41-66
District Reserve Detail	67
District Debt Summary	68-69
District Organizational Chart	70
Authorized Staff Positions	71

Marina Coast Water District  
 FY 2019/2020 Draft Budget Calendar  
 (Includes Marina & Ord Community)  
 Revised 03/11/2019

<u>DATE</u>	<u>RP</u>	<u>MCWD</u>	<u>WWOC</u>	<u>FORA</u>	<u>DESCRIPTION</u>
12/17/2018	DAS/GM	X			Distribute 2019-2020 Draft Budget Schedule to MCWD Board
12/19/2018	DAS/GM		X		Distribute 2019-2020 Draft Budget Schedule to FORA
02/12/2019	DAS/DH	X			Distribute 2019-2020 Budget Worksheets to Department Heads
02/19/2019	DAS/GM	X			Present 2017-2018 Mid-Year Report to MCWD Board. PUBLIC MEETING
02/19/2019	DAS/DH	X			2019-2020 Budget Worksheets due from Department Heads
02/27/2019	DAS/GM	X	X		Present 2018-2019 Mid-Year Report and Draft 2019-2020 5-Year CIP Plan to WWOC. PUBLIC MEETING
03/11/2019	DAS/GM	X			Budget Workshop Meeting (Department Heads/Board). PUBLIC MEETING
03/13/2019	DAS/GM	X	X		Present 2019-2020 Ord Community Draft Budget to WWOC. PUBLIC MEETING
04/03/2019 Special Meeting	DAS/GM		X		Q&A with WWOC on 2019-2020 Ord Community Draft Budget and provide WWOC with updates from the Budget Workshop. PUBLIC MEETING
04/15/2019	DAS/GM	X			Present Revised 2016-2020 Draft Budget to the Board. PUBLIC MEETING
04/17/2019	DAS/GM		X		Further discussion 2019-2020 Ord Community Revised Draft Budget with WWOC. Possible WWOC recommendation to FORA Board. PUBLIC MEETING
05/01/2019 Special Meeting	DAS/GM	X	X		2019-2020 Ord Community Revised Draft Budget presented to WWOC for recommendation to FORA Board (if necessary). PUBLIC MEETING
05/10/2019	DAS/GM FORAStaff	X		X	FORA Board first vote to adopt 2019-2020 Ord Community Budgets. PUBLIC MEETING
06/14/2019	DAS/GM FORAStaff	X		X	FORA Board second vote to adopt 2019-2020 Ord Community Budgets (if necessary) PUBLIC MEETING
06/17/2019	DAS//GM	X			MCWD Board adopts 2019-2020 District Budget. PUBLIC MEETING

GM= General Manager; DAS= Director of Administrative Services; DH=Department Heads

# MEMORANDUM

Marina Coast Water District

---

**DATE:** March 13, 2019

**TO:** Fort Ord Reuse Authority  
Water/Wastewater Oversight Committee

**FROM:** Kelly Cadiente, Director of Administrative Services

**SUBJECT:** Budget Summary

## Introduction.

On behalf of the District, I am pleased to present the Fiscal Year 2019-2020 Budget. This budget was developed with a focus on cost containment of system operations and infrastructure needs and is designed to assist in meeting the strategic goals of the Board.

The purpose of this Budget Summary is to provide an overview of the FY 2019–2020 Draft Budget document and the key assumptions used in developing this Budget.

The Draft Budget includes 6 separate cost centers:

- Marina Water
- Marina Wastewater Collection (Sewer)
- Ord Community Water
- Ord Community Wastewater Collection (Sewer)
- Regional Urban Water Augmentation Project (RUWAP)
- Regional Desalination Project

In accordance with Article 7 of the Water Wastewater Facilities Agreement between Marina Coast Water District (MCWD) and Fort Ord Reuse Authority (FORA), the District maintains separate cost centers to ensure that revenues and expenses are appropriately segregated and maintained for the Marina systems, the Ord Community systems, and the accruing costs for the Regional Urban Water Augmentation Project (RUWAP). On October 25, 2006, the Board adopted Ordinance No. 43 which also requires the cost centers remain separate after the expiration of the Agreement between MCWD and FORA.

District costs that are not dedicated to a specific cost center are shared among the four primary cost centers - Marina Water, Marina Sewer, Ord Community Water, and Ord Community Sewer. Sharing of these expenses, in turn, creates efficiencies and cost savings for administrative functions for the two service areas that would otherwise not be realized. The District uses the expense ratio method to allocate these shared expenses which represent approximately 15% of the District's Operating Expenses. This approach is also referred to by "as all others" – essentially that general benefit functions mirror how the first 85% of the District's costs are accrued. These costs include Admin salaries and benefit costs, Board related costs, information technology related costs, accounting services, rate study costs etc. These functions serve the District as a whole and cannot be reasonably allocated on a direct basis or by one of the above metrics. The District contracted with Carollo Engineers in 2017 to review the District's cost

allocation methods and provide a Cost Allocation Plan that can be found on the District's website at following link:

[http://www.mcwd.org/docs/financials/MCWD%20Cost%20Allocation%20Plan%20\(f\)%2026Feb.pdf](http://www.mcwd.org/docs/financials/MCWD%20Cost%20Allocation%20Plan%20(f)%2026Feb.pdf)

For FY 2019-2020, the assigned percentages are as follows:

Marina Water	23%	Ord Community Water	57%
Marina Sewer	6%	Ord Community Sewer	14%

Over the past several years, direct operating expenses throughout the Ord Community has increased causing its allocation percentages of shared expenses to increase. These expenses include the administrative costs associated with fulfilling the District's responsibilities under the Facilities Agreement with the FORA and the operations and maintenance costs on the large and aged systems within the Ord Community.

The following tables are historical and current calculations of general allocation percentages:

<sup>1</sup>Total Operating Expenses less depreciation/amortization. RUWAP operating expenses are included in Ord Water cost center for % allocation purposes for FY 2015-16 through FY 2019-20.

All Cost Centers	FY 2013-14 Operating Costs <sup>1</sup>	FY 2015-16 Allocation %	FY 2014-15 Operating Costs <sup>1</sup>	FY 2016-17 Allocation %	FY 2015-16 Operating Costs <sup>1</sup>	FY 2017-18 Allocation %	FY 2016-17 Operating Costs <sup>1</sup>	FY 2018-19 Allocation %	FY 2017-18 Operating Costs <sup>1</sup>	FY 2019-20 Allocation %
Marina Water	\$2,039,492	27%	\$2,015,266	26%	\$2,111,909	25%	\$2,277,038	24%	\$2,374,800	23%
Marina Sewer	\$526,952	7%	\$550,054	7%	\$528,332	7%	\$621,365	7%	\$603,516	6%
Ord Water	\$4,155,620	54%	\$4,294,101	54%	\$4,540,636	54%	\$5,236,646	54%	\$6,032,725	58%
Ord Sewer	\$893,864	12%	\$1,002,451	13%	\$1,187,678	14%	\$1,476,337	15%	\$1,453,937	14%
RUWAP Total	\$7,615,928	100%	\$7,861,872	100%	\$8,368,555	100%	\$9,611,386	100%	\$10,464,978	100%
Only Cost Centers	FY 2013-14 Operating Costs	FY 2015-16 Allocation %	FY 2014-15 Operating Costs	FY 2016-17 Allocation %	FY 2015-16 Operating Costs	FY 2017-18 Allocation %	FY 2016-17 Operating Costs	FY 2018-19 Allocation %	FY 2017-18 Operating Costs <sup>1</sup>	FY 2019-20 Allocation %
Marina Water	\$2,039,492	79%	\$2,015,266	79%	\$2,111,909	80%	\$2,277,038	79%	\$2,374,800	80%
Marina Sewer	\$526,952	21%	\$550,054	21%	\$528,332	20%	\$621,365	21%	\$603,516	20%
Ord Only Cost Centers	FY 2012-13 Operating Costs <sup>1</sup>	FY 2014-15 Allocation %	FY 2014-15 Operating Costs <sup>1</sup>	FY 2016-17 Allocation %	FY 2015-16 Operating Costs <sup>1</sup>	FY 2017-18 Allocation %	FY 2016-17 Operating Costs <sup>1</sup>	FY 2018-19 Allocation %	FY 2017-18 Operating Costs <sup>1</sup>	FY 2019-20 Allocation %
Ord Water	\$526,952	37%	\$4,294,101	81%	\$4,540,636	79%	\$5,236,646	78%	\$6,032,725	81%
Ord Sewer	\$893,864	63%	\$1,002,451	19%	\$1,187,678	21%	\$1,476,337	22%	\$1,453,937	19%

Water Only Cost Centers	FY 2012-13 Operating Costs <sup>1</sup>	FY 2014-15 Allocation %	FY 2014-15 Operating Costs <sup>1</sup>	FY 2016-17 Allocation %	FY 2015-16 Operating Costs <sup>1</sup>	FY 2017-18 Allocation %	FY 2015-16 Operating Costs <sup>1</sup>	FY 2018-19 Allocation %	FY 2017-18 Operating Costs <sup>1</sup>	FY 2019-20 Allocation %
Marina Water	\$2,039,492	33%	\$2,015,266	32%	\$2,111,909	32%	\$2,277,038	30%	\$2,374,800	28%
Ord Water	\$4,155,620	67%	\$4,294,101	68%	\$4,540,636	68%	\$5,236,646	70%	\$6,032,725	72%
Sewer Only Cost Centers	FY 2012-13 Operating Costs	FY 2014-15 Allocation %	FY 2014-15 Operating Costs	FY 2016-17 Allocation %	FY 2015-16 Operating Costs	FY 2017-18 Allocation %	FY 2016-17 Operating Costs	FY 2018-19 Allocation %	FY 2017-18 Operating Costs <sup>1</sup>	FY 2019-20 Allocation %
Marina Sewer	\$526,952	37%	\$550,054	35%	\$528,332	31%	\$621,365	30%	\$603,516	29%
Ord Sewer	\$893,864	63%	\$1,002,451	65%	\$1,187,678	69%	\$1,476,337	70%	\$1,453,937	71%

Assumptions. The key assumptions used to build this Budget include:

- Projected revenues in Ord Systems are based on current customer accounts and projected development activity. In addition, the District conducted a 5-year rate study which proposed a 5% water rate increase and 3% sewer rate increase for Ord customers.
- Proposed monthly rates are based on the 5-year rate study conducted in 2017-2018 and approved by the Board January 22, 2018. Water rates consist of a fixed charge and commodity rates.
  - o The fixed charge generates the needed revenue to cover the District's fixed costs which include:
    - Base Costs – operating and capital costs incurred by the water system to provide a basic level of service to each customer.
    - Peak Costs – those operating costs incurred to meet peak demands in excess of base demand which include basic water supply and distribution costs.
    - Customer Costs – Fixed expenditures that relate to operational support such as accounting, billing, customer services, administrative and technical support.
    - Service Costs – Meter maintenance costs and capacity related costs including debt service.
  - o The commodity rates generate revenue to cover base, peak and customer costs directly related to the production and distribution of water production. The rate study included the change from a 3-tier system to a 2-tier system for commodity rates. The rate study can be accessed on the District's website by clicking on the following link: <http://www.mcwd.org/docs/financials/MCWD%202018%20CoS%20Rate%20Study%20Final%20Report.pdf>.
- Wastewater collection rates consist of fixed costs to collect and transmit to the Monterey One Water Agency (M1W). The rate is calculated based on the total projected costs of the collection system (Base Costs and Customer Costs) divided by the projected equivalent dwelling units (edu) of the District.
- Proposed monthly rates with the proposed rate increases for the Marina customers and for Ord Community customers as follows:

Effective January 1, 2020

<u>Water Rate (monthly)</u>		<u>Ord Community</u>
Meter Service Charge		\$43.62
Tier 1	(0 - 10 hcf)	4.37
Tier 2	(10+ hcf)	8.51
<u>Flat Rate Billing</u>		<u>162.95</u>
Average monthly bill (10 hcf)		\$87.32
 <u>Wastewater Collection Rate (monthly)</u>		 <u>Ord Community</u>
Flat Rate		\$34.85

- The average combined water and wastewater collection monthly invoice increased 5% for the Ord Community.
- Projected revenues and funding sources of \$33.816 million for Ord cost centers; Ord Community Water \$13.923 million, Ord Community Sewer \$7.422 million, and RUWAP \$12.471 million which includes contributions from FORA of \$1.000 million and \$11.440 million of loan proceeds from the State Revolving Fund which funded in April 2018.
- Projected expenses and CIP of \$32.485 million for Ord cost centers; Ord Community Water \$13.849 million, Ord Community Sewer \$6.122 million, and \$12.514 million for RUWAP.
- Scheduled debt (principal/interest) payments on the 2010 \$8 million bond that refinanced the Armstrong Ranch Promissory Note. June 1, 2020 will be the final payment on this debt.
- Scheduled debt (principal/interest) payments on the 2015 \$29.840 million bond for Marina and Ord Community service area that advance refunded the 2006 bond to take advantage of lower interest rates.
- Scheduled debt (principal/interest) payments on the \$2.800 million 2017 Santa Cruz County Bank Loan for the conversion of the Rabobank N.A. Construction Loan for the construction of the building leased to the Bureau of Land Management (BLM). Lease revenues from BLM will fund the debt service over the life of the loan.
- Capital replacement reserve funding for Ord Systems per Board Policy \$0.200 million for Ord Water and \$0.100 million for Ord Sewer.
- New Debt will need to be issued for approximately \$5.650 million in order to fund the needed capital equipment replacement as well as the scheduled capital improvement projects for FY 2019-2020.
- Salaries adjusted 4.0% for Cost of Living Adjustment (COLA). MOU agreements with District employee groups require the COLA be based on the April Consumer Price Index.



- Support for a staff of 42 positions:
  - Administration – 16
  - Operations & Maintenance – 16
  - Laboratory – 1
  - Conservation – 1
  - Engineering – 6
  - Water Resources - 2
- Increased healthcare costs based on information received as of February 2019 (a 15% increase has been included).
- Continuation of various conservation rebate program costs.
- Cost of new technology (upgrades per the District's Technology Plan).
- Annual maintenance of facilities for Operations & Maintenance.

Prior Year Accomplishments. In FY 2018-2019 the District recognized the following accomplishments:

- MCWD's 2017 Comprehensive Annual Financial Report (CAFR) was awarded the Certificate of Achievement for Excellence in Financial Reporting from the Government Finance Officers Association (GFOA). The Certificate of Achievement is the highest form of recognition in governmental accounting and financial reporting. This marks the tenth consecutive award for MCWD, indicative of our efforts to be transparent and prudent with our financial reporting. The District is confident that the 2018 CAFR, submitted to the GFOA in December 2018, will also receive the award.
- In December 2018, the District presented its second Year in Review for FY 2017-2018 as part of the District's ongoing commitment to communication, transparency and collaboration with the community.
- On February 20, 2018, the District held its groundbreaking of the RUWAP Transmission Pipeline. MCWD awarded the construction contract to Mountain Cascade, Inc. in the amount of \$22,648,480 to build the RUWAP pipeline and the Blackhorse Recycled Water Reservoir. Construction is substantially complete and awaits the completion of M1W's Pure Water Monterey Advanced Water Treatment Plant in order to provide advanced treated water to our customers as well as to the Pure Water Monterey.
- On April 28, 2018 The District received an additional \$11.4 million Proposition 1 (the Water Quality, Supply, and Infrastructure Improvement Act of 2014 and the Clean Water State Revolving Fund) low-interest loan and grant for the RUWAP distribution system.
- In April 2018, the District submitted an application to the Local Agency Formation Commission ("LAFCO) for annexation of the current service area of MCWD known as Central Marina and the Ord Community service areas within the former Fort Ord. The Municipal Services Review was conducted in February/March 2019. Once annexation is complete, ratepayers within the Ord Community will have the ability to vote for the District's Board of Directors and thereby

receive direct representation from the Board. Currently, Ord Community ratepayers receive indirect representation via the FORA Board through a facilities contract between the District and FORA.

**ORD COMMUNITY  
WATER & WASTEWATER SYSTEM  
RATES, FEES and CHARGES  
FY 2019 - 2020  
Effective July 1, 2019 and January 1, 2020**

		<u>Current Rates</u> <u>July 1, 2019</u>				<u>January 1, 2020</u>	
<b>Water Consumption Charge</b>							
0 - 10 hcf	First Tier	4.13	per hcf	0 - 10 hcf	First Tier	4.37	per hcf
10+ hcf	Second Tier	8.04	per hcf	10+ hcf	Second Tier	8.51	per hcf
Monthly Capital Surcharge (Connections after June 30, 2005 & before July 5, 2014)		20.00	per EDU			20.00	per EDU
Flat Rate		162.95	per unit			172.75	per unit
<b>Monthly Minimum Water Charges</b>							
<u>Size</u>		<u>Fee</u>				<u>Fee</u>	
5/8" or 3/4"		41.20	per month			43.62	per month
1"		57.88	per month			61.28	per month
1 1/2"		99.57	per month			105.43	per month
2"		149.61	per month			158.41	per month
3"		283.05	per month			299.68	per month
4"		433.16	per month			458.62	per month
6"		850.15	per month			900.12	per month
8"		1,684.12	per month			1,783.11	per month
<b>Monthly Minimum Sewer Charges</b>							
Monthly Wastewater Charge		33.80	per EDU			34.85	per EDU
Monthly Capital Surcharge (Connections after June 30, 2005 & before July 5, 2014)		5.00	per EDU			5.00	per EDU
<b>Temporary Water Service</b>							
Meter Deposit Fee		702.00				745.00	
Hydrant Meter Fee (Set/Remove Fee)		152.00	one time fee			162.00	one time fee
Hydrant Meter Fee (Relocate Fee)		152.00	per occurrence			162.00	per occurrence
Minimum Monthly Service Charge		163.70	per month			173.55	per month
Estimated Water Consumption Deposit		1,188.00	minimum			1,260.00	minimum
<b>Private Fire Meter Charge</b>							
<u>Size</u>		<u>Fee</u>				<u>Fee</u>	
1"		2.44	per month			2.94	per month
1 1/2"		7.08	per month			7.51	per month
2"		15.11	per month			16.02	per month
2 1/2"		27.16	per month			28.79	per month
3"		43.88	per month			46.51	per month
4"		93.51	per month			99.12	per month
6"		271.61	per month			287.91	per month
8"		578.82	per month			613.54	per month
<b>Capacity Charges</b>							
Water		\$8,010.00	per edu			\$8,010.00	per edu
Sewer		\$3,322.00	per edu			\$3,322.00	per edu

**MARINA & ORD COMMUNITY  
WATER & WASTEWATER SYSTEM  
RATES, FEES and CHARGES  
FY 2019 - 2020  
Effective July 1, 2019**

General Manager	\$176.00 per hour
District Engineer	\$138.00 per hour
Director of Administrative Services	\$126.00 per hour
Senior Engineer	\$110.00 per hour
Associate Engineer	\$80.00 per hour
Engineering Administrative Assistant	\$77.00 per hour
Engineering Assistant	\$61.00 per hour
Lab Supervisor	\$103.00 per hour
O&M Manager	\$123.00 per hour
O&M Supervisor	\$112.00 per hour
O&M Electrical/Mechanical Supervisor	\$112.00 per hour
Operations & Maintenance System Operator 3	\$108.00 per hour
Operations & Maintenance System Operator 2/Backflow Specialist	\$100.00 per hour
Operations & Maintenance System Operator 2	\$96.00 per hour
Operations & Maintenance System Operator 1	\$61.00 per hour
Conservation Specialist	\$87.00 per hour
Water Resources Manager	\$103.00 per hour
Water Resources Analyst	\$77.00 per hour

Work Truck	\$20.00 per hour
Backhoe Tractor	\$30.00 per hour
Front Loader Tractor	\$58.00 per hour
Vector Truck	\$30.00 per hour
Dump Truck	\$30.00 per hour
Ground Penetrating Radar Uit	\$10.00 per hour
CCTV Camera	\$65.00 per hour

Photocopy Charges \$0.20 per copy

<u>Size</u>	<u>Meter Installation Fee</u>
5/8" or 3/4"	\$350.00
1"	\$400.00
1 1/2"	\$450.00
2"	\$700.00
3" or Larger	Actual direct and indirect cost to district. Advance payment to be based on estimated cost.

Preliminary Project Review Fee (large projects)	\$500.00
Plan Review Fees:	
Existing Residential Modifications	\$200.00 per unit plus additional fees
Existing Commercial Modifications	\$400.00 per unit plus additional fees
Plan Review	\$500.00 per unit plus additional fees
Water/Sewer Permit Fee	\$30.00 each
Small Project Inspection Fee (single lot)	\$400.00 per unit
Large Project Inspection Fee (large projects)	\$500.00 per unit plus 3% of water & sewer construction cost
Building Modification/Addition Fee	\$200.00 per unit
Deposit for a Meter Relocation	\$200.00 deposit, plus actual costs
Mark and Locate Fee (USA Markings)	\$100.00 first mark and locate at no-charge, each additional for \$100
Backflow/Cross Connection Control Fee	\$45.00 per device
Additional Backflow/Cross Connection Device	\$30.00 per device
Deposit for New Account/Re-Establish Account	\$35.00 per edu
Meter Test Fee	\$15.00 for 3/4" meter, actual cost for 1" and larger
Returned Check Fee	\$15.00 per returned item
Basic Penalty	10% of the delinquent amount
Additional Penalty	1.50% per month of the delinquent amount

**Marina Coast Water District  
Budget Summary  
Budget FY 2019-2020**

1 Ln #	2 REVENUE AND OTHER SOURCES	3 ORD COMMUNITY WATER	4 SEWER	5 RUWAP	6 TOTAL	7 Ln #
1	WATER SALES	7,599,670	-	-	7,599,670	1
2	FLAT RATE ACCOUNTS	50,000	-	-	50,000	2
3	OTHER WATER SALES	9,756	-	-	9,756	3
4	SEWER SALES	-	2,963,074	-	2,963,074	4
5	FIRE SYSTEM CHARGE	241,308	-	-	241,308	5
6	HYDRANT METER WATER SALES	243,613	-	-	243,613	6
7	BACKFLOW PREVENTION	30,000	-	-	30,000	7
8	LATE CHARGES	100,000	-	-	100,000	8
9	PERMITS/PLAN CHECK	25,000	11,000	-	36,000	9
10	WHEELING CHARGE	24,000	-	-	24,000	10
11	DEVELOPER FEES	400,000	105,000	-	505,000	11
12	METER FEES	300,000	-	-	300,000	12
13	CAPACITY FEES/CAPITAL SURCHARGE	1,999,290	717,588	-	2,716,878	13
14	OTHER INCOME	11,400	2,800	-	14,200	14
15	INTEREST INCOME	84,500	25,085	200	109,785	15
16	DEFD REVENUE - BONDS	71,090	23,395	31,355	125,840	16
17	GRANT REVENUE	303,758	-	-	303,758	17
18	IOP RENTAL REVENUE	91,969	25,751	-	117,720	18
19	BLM RENTAL REVENUE	171,568	48,039	-	219,607	19
20	ARMSTRONG RANCH RENTAL REVENUE	-	-	-	-	20
21	GAIN OR LOSS ON ASSET SALES	16,200	-	-	16,200	21
22	FORA RUWAP CONTRIBUTION	-	-	1,000,000	1,000,000	22
23	MIW RUWAP REIMBURSEMENT	-	-	-	-	23
23	LOAN PROCEEDS - STATE REVOLVING FUND <sup>1</sup>	-	-	11,440,000	11,440,000	23
24	NEW DEBT PROCEEDS <sup>2</sup>	2,150,000	3,500,000	-	5,650,000	24
25	<b>TOTAL REVENUE AND OTHER SOURCES</b>	<b>13,923,123</b>	<b>7,421,733</b>	<b>12,471,555</b>	<b>33,816,410</b>	25
	<b>EXPENSES AND OTHER USES</b>					
26	SALARIES & BENEFITS	3,671,883	992,910	-	4,664,793	26
27	DEPT. EXPENSE	4,017,715	632,961	1,200	4,651,876	27
28	INTEREST EXPENSE	719,737	233,629	388,454	1,341,820	28
29	FRANCHISE & ADMIN FEES	485,864	175,700	-	661,564	29
30	TOTAL C I P/CAPITALIZED EQUIPMENT	4,953,626	4,086,980	12,124,582	21,165,188	30
31	PRINCIPAL DEBT SERVICE	1,388,499	414,252	228,850	2,031,600	31
32	TRANSFER TO CAP REPLACEMENT FUND	200,000	100,000	-	300,000	32
33	TRANSFER TO/(FROM) RESERVES NET	(1,514,201)	785,300	(271,531)	(1,000,432)	33
34	<b>TOTAL EXPENSES AND OTHER USES</b>	<b>13,923,123</b>	<b>7,421,732</b>	<b>12,471,555</b>	<b>33,816,410</b>	34
35	<b>BALANCE</b>	<b>0</b>	<b>0</b>	<b>0</b>	<b>0</b>	35

<sup>1</sup>Includes proceeds from the State Revolving Fund to be obtained for the RUWAP Pipeline Project

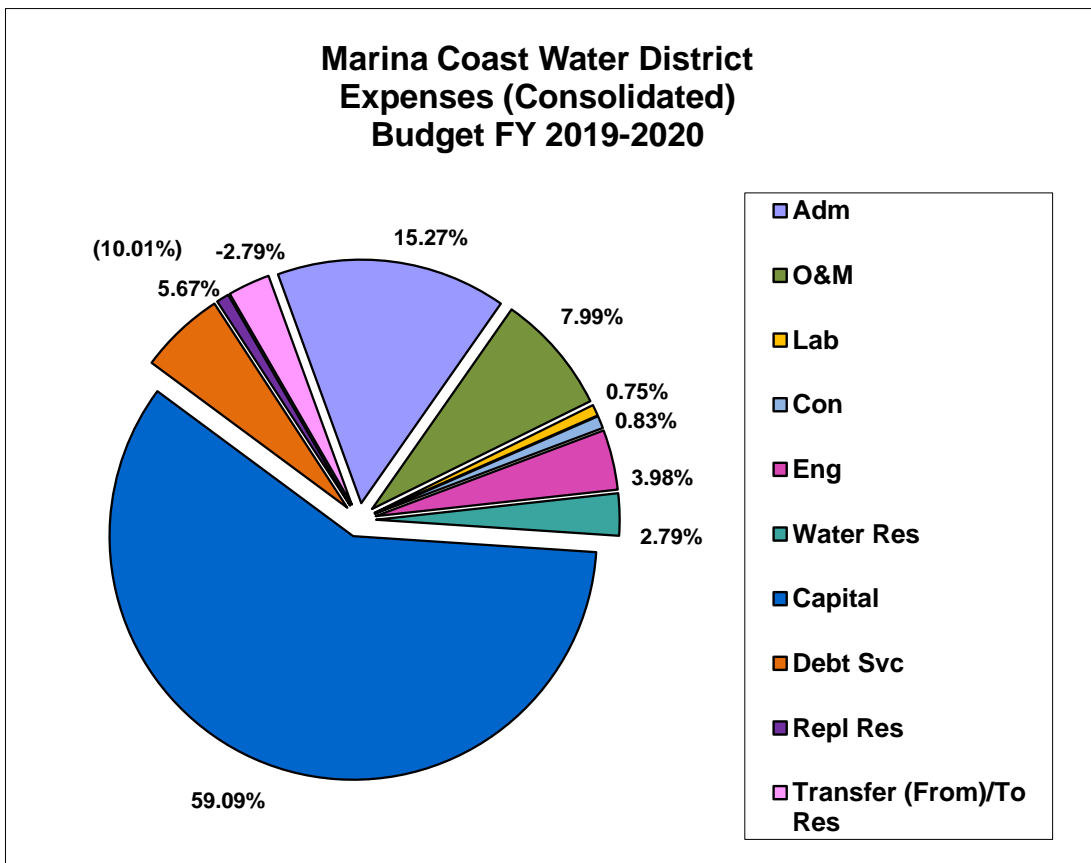
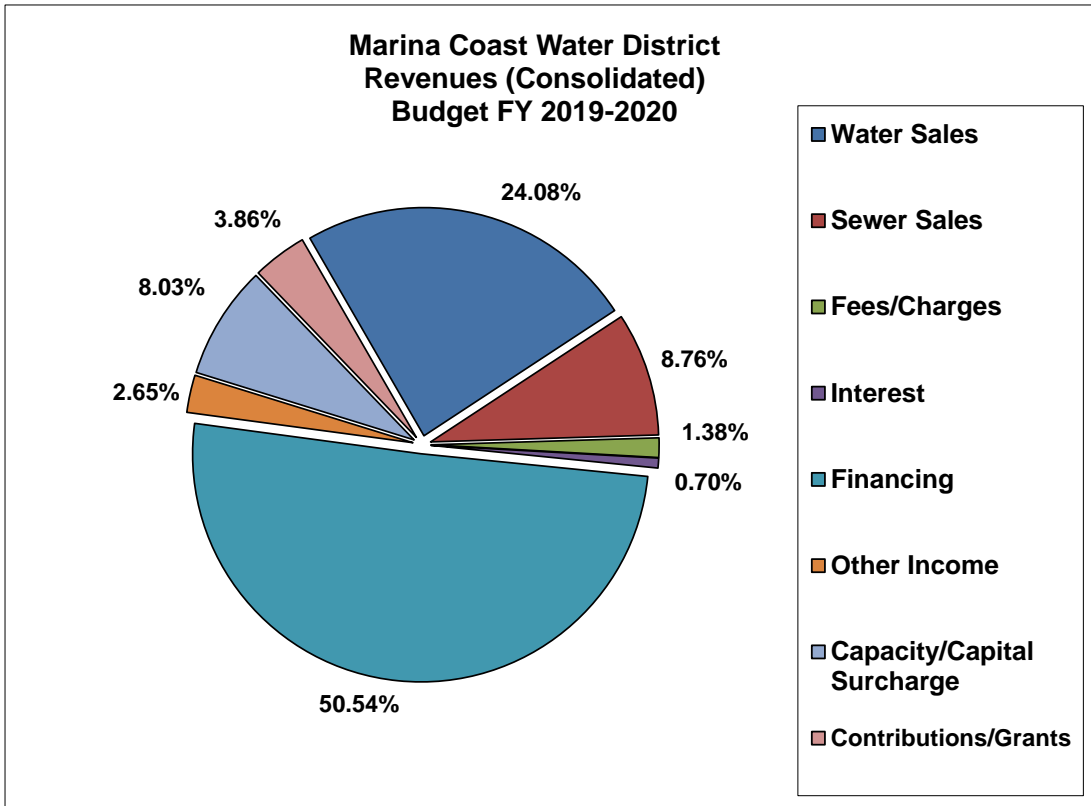
<sup>2</sup>Includes proceeds from New Debt to be issued in FY 2019-2020

**Marina Coast Water District**  
**Budget Expense Summary by Department**  
**Budget FY 2019-2020**

1 Ln #	2 EXPENSES	3 ORD COMMUNITY		5	6	7 Ln #
		WATER	SEWER	RUWAP	TOTAL	
1	ADMIN					1
2	SALARIES & BENEFITS	1,427,556	350,572		1,778,128	2
3	DEPT. EXPENSE	1,477,263	208,922	1,200	1,687,385	3
4	INTEREST EXPENSE	719,737	233,629	388,454	1,341,820	4
5	FRANCHISE & ADMIN FEE	485,864	175,700		661,564	5
6	TOTAL - ADMINISTRATION EXP	4,110,420	968,823	389,654	5,468,897	6
7	O & M					7
8	SALARIES & BENEFITS	1,195,054	502,002		1,697,057	8
9	DEPT. EXPENSE	939,957	224,039		1,163,996	9
10	TOTAL - OPER & MAINT EXP	2,135,011	726,041	-	2,861,053	10
11	LABORATORY					11
12	SALARIES & BENEFITS	162,408			162,408	12
13	DEPT. EXPENSE	104,731			104,731	13
14	TOTAL - LABORATORY EXP	267,139	-	-	267,139	14
15	CONSERVATION					15
16	SALARIES & BENEFITS	146,813			146,813	16
17	DEPT. EXPENSE	150,170			150,170	17
18	TOTAL - CONSERVATION EXP	296,983	-	-	296,983	18
19	ENGINEERING					19
20	SALARIES & BENEFITS	561,726	140,336		702,062	20
21	DEPT. EXPENSE	525,000	200,000		725,000	21
22	TOTAL - ENGINEERING EXP	1,086,726	340,336	-	1,427,062	22
23	WATER RESOURCES					23
24	SALARIES & BENEFITS	178,325			178,325	24
25	DEPT. EXPENSE	820,594			820,594	25
26	TOTAL - WATER RESOURCES EXP	998,919	-	-	998,919	26
27	TOTAL EXPENSES	8,895,199	2,035,200	389,654	11,320,053	27
28	CAPITAL COSTS					28
29	CAPITAL IMPROVEMENT PROJ.	4,505,210	3,850,800	12,124,582	20,480,592	29
30	CAPITALIZED EQUIPMENT	438,660	236,180	-	674,840	30
31	SEASIDE LAND TRANSFER	9,756	-	-	9,756	31
32	TOTAL CIP/CAPITALIZED EQUIPMENT	4,953,626	4,086,980	12,124,582	21,165,188	32
33	TOTAL EXPENSES & CIP	13,848,825	6,122,180	12,514,236	32,485,241	33
34	PRINCIPAL DEBT SERVICE					34
35	PRINCIPAL (2010 Bond)	867,500	242,900		1,110,400	35
36	PRINCIPAL (2015 Bond)	477,600	159,200	228,850	865,650	36
37	SANTA CRUZ COUNTY BANK LOAN (BLM)	43,399	12,152		55,550	37
38	TOTAL - PRINCIPAL DEBT SERVICE	1,388,499	414,252	228,850	2,031,600	38
39	TRANSFER TO CAPITAL REPL FUND	200,000	100,000		300,000	39
40	TRANSFER (FROM)/TO DEBT RES	(424,740)	(118,933)	-	(543,673)	40
41	TRANSFER (FROM)/TO CAP REPL RES, NET	424,709	238,713	-	663,422	41
42	TRANSFER (FROM)/TO CAP CHG RES, NET	(1,661,922)	(385,200)	(586,949)	(2,634,071)	42
43	TRANSFER (FROM)/TO OPERATING RES, NET	147,752	1,050,720	315,418	1,513,890	43
44	TOTAL - TRANSFERS (FROM)/TO RES, NET	(1,514,201)	785,300	(271,531)	(1,000,432)	44
45	TOTAL EXPENSES & USES	13,923,123	7,421,732	12,471,555	33,816,410	45

**Marina Coast Water District  
Budget Summary Comparison  
Budget FY 2019-2020**

	2017-2018 ACTUALS	2018-2019 EST. ACTUALS	2018-2019 ADOPTED	2019-2020 PROPOSED	BUD vs. BUD % CHANGE	BUD vs. EST % CHANGE	
<b>REVENUE</b>							
1 WATER SALES	6,138,841	6,627,092	6,720,734	7,843,283	16.7%	18.4%	1
2 FLAT RATE ACCOUNTS	925,653	151,777	50,000	50,000	0.0%	-67.1%	2
3 OTHER WATER SALES	8,836	9,204	8,575	9,756	-	6.0%	3
4 SEWER SALES	2,587,333	2,844,006	2,732,657	2,963,074	8.4%	4.2%	4
5 FIRE SYSTEM CHARGE	202,013	227,649	177,361	241,308	36.1%	6.0%	5
6 BACKFLOW PREVENTION	29,331	28,000	28,000	30,000	7.1%	7.1%	6
7 LATE CHARGES	160,326	99,561	50,000	100,000	100.0%	0.4%	7
8 PERMITS/PLAN CHECK	27,090	35,580	39,000	36,000	-7.7%	1.2%	8
9 WHEELING CHARGE	24,000	24,000	24,000	24,000	0.0%	0.0%	9
10 DEVELOPER FEES	486,240	394,856	582,500	505,000	-13.3%	27.9%	10
11 METER FEES	656,598	300,609	275,000	300,000	9.1%	-0.2%	11
12 CAPACITY FEES/CAPITAL SURCHARGE	5,129,177	4,120,549	4,594,974	2,716,878	-40.9%	-34.1%	12
13 OTHER INCOME	39,756	11,040	13,600	14,200	4.4%	28.6%	13
14 INTEREST INCOME	71,638	109,740	27,772	109,785	295.3%	0.0%	14
15 DEFD REVENUE - BONDS	125,837	125,837	38,590	125,840	226.1%	0.0%	15
16 RENTAL REVENUE	332,175	317,192	337,327	337,327	0.0%	6.3%	16
17 GRANT REVENUE	-	296,242	370,302	303,758	0.0%	0.0%	17
18 GAIN OR LOSS ON ASSET SALES	20,417	-	-	16,200	0.0%	0.0%	18
19 GAIN OR LOSS BOND ACCOUNTS	2	-	-	-	0.0%	0.0%	19
20 FORA RUWAP CONTRIBUTION	3,596,221	1,200,000	1,200,000	1,000,000	-16.7%	-16.7%	20
21 MIW RUWAP CAPACITY SHARE CONTRIBUTION	7,079,937	3,560,063	10,464,000	-	-100.0%	-100.0%	21
22 LOAN PROCEEDS - ST REV FUND	-	9,461,895	6,000,000	11,440,000	90.7%	0.0%	22
23 LINE OF CREDIT PROCEEDS	6,562,695	-	-	-	-	-	23
24 NEW DEBT PROCEEDS	-	-	-	5,650,000	0%	0.0%	24
<b>25 TOTAL REVENUE</b>	<b>34,204,116</b>	<b>29,944,892</b>	<b>33,734,392</b>	<b>33,816,410</b>	<b>0.2%</b>	<b>12.9%</b>	<b>25</b>
<b>EXPENSES</b>							
26 SALARIES & BENEFITS	3,518,705	3,720,170	4,179,286	4,664,793	11.6%	25.4%	26
27 DEPT. EXPENSE	4,984,792	3,439,458	3,613,592	4,651,876	28.7%	35.3%	27
28 INTEREST EXPENSE	1,375,413	1,421,385	1,227,376	1,341,820	9.3%	-5.6%	28
29 FRANCHISE & ADMIN FEES	758,267	637,081	808,484	661,564	-18.2%	3.8%	29
30 TOTAL C IP/CAPITALIZED EQUIPMENT	20,969,673	18,117,383	23,559,040	21,165,188	-10.2%	16.8%	30
31 PRINCIPAL DEBT SERVICE	1,827,493	1,892,013	1,478,640	2,031,600	37.4%	7.4%	31
32 TRANSFER TO CAP REPLACEMENT FUND	600,000	400,000	300,000	300,000	100.0%	100.0%	32
33 TRANSFER (FROM)/TO RESERVES	169,774	317,403	(1,432,026)	(1,000,432)	-30.1%	-415.2%	33
<b>34 TOTAL EXPENSES</b>	<b>34,204,117</b>	<b>29,944,892</b>	<b>33,734,392</b>	<b>33,816,411</b>	<b>0.2%</b>	<b>12.9%</b>	<b>34</b>
<b>35 BALANCE</b>	<b>0</b>	<b>0</b>	<b>0</b>	<b>0</b>	<b>0</b>	<b>0%</b>	<b>35</b>





Marina Coast Water District

MARINA COAST WATER DISTRICT  
REVENUE BUDGET FOR FY 2019-2020

ACCOUNT NAME	ORD WATER				2019-2020 PROPOSED	BUD vs BUD % CHANGE	BUD vs EST % CHANGE
	2016-2017 ACTUAL	2017-2018 ACTUAL	2018-2019 ADOPTED	2018-2019 ESTIMATED			
WATER SALES RESIDENTIAL	2,941,605	4,095,467	4,519,695	4,308,914	4,524,360	0.1%	5.0%
WATER SALES BUSINESS	717,425	932,959	1,098,292	1,192,183	2,114,108	92.5%	77.3%
WATER SALES SCHOOLS	282,966	312,332	376,960	359,821	385,008	2.1%	7%
WATER SALES MULTIPLES	366,390	420,277	463,234	433,565	463,915	0.1%	7.0%
WATER SALES GOVERNMENT	63,737	90,909	112,553	104,934	112,279	-0.2%	7.0%
FIRE SYSTEM CHARGE	184,522	202,013	177,361	227,649	241,308	36.1%	6.0%
HYDRANT METER WATER SALES	172,977	286,897	150,000	227,676	243,613	62.4%	7.0%
OTHER WATER SALES	8,336	8,836	8,575	9,204	9,756	13.8%	6.0%
LATE CHARGE FEES	93,481	160,326	50,000	99,561	100,000	100.0%	0.4%
BACKFLOW REVENUE	27,818	29,331	28,000	28,000	30,000	7.1%	7.1%
FLAT RATE ACCOUNTS	1,382,768	925,653	50,000	151,777	50,000	0.0%	-67.1%
RECLAIMED WATER SALES	-	-	-	-	-	-	-
PLAN CHECK/PERMIT FEES	14,220	14,650	25,000	24,850	25,000	0.0%	0.6%
MAINTENANCE REVENUE	-	-	-	-	-	-	-
METER FEES	295,857	656,598	275,000	300,609	300,000	9.1%	-0.2%
WHEELING CHARGE	24,000	24,000	24,000	24,000	24,000	0.0%	0.0%
DEVELOPER FEES	448,935	369,551	472,500	272,219	400,000	-15.3%	46.9%
SEWER SALES BUSINESS	-	-	-	-	-	-	-
SEWER SALES RESIDENTIAL	-	-	-	-	-	-	-
<b>TOTAL OPERATING REVENUES</b>	<b>7,025,036</b>	<b>8,529,799</b>	<b>7,831,170</b>	<b>7,764,961</b>	<b>9,023,348</b>	<b>15.2%</b>	<b>16.2%</b>
CAPITAL SURCHARGE	167,052	167,971	166,300	163,351	165,000	-0.8%	1.0%
CAPACITY CHARGES	4,008,223	3,429,782	3,236,040	3,236,354	1,834,290	-43.3%	-43.3%
INTEREST INCOME	23,123	51,396	24,000	75,922	76,000	216.7%	0.1%
INTEREST INCOME - 2010 BOND	1,507	4,961	1,900	8,137	8,100	326.3%	-0.4%
INTEREST INCOME - 2015 BONDS	61	431	100	397	400	300.0%	0.8%
OTHER INCOME	4,676	2,666	10,800	498	11,400	5.6%	2190.3%
INSURANCE REFUNDS	4,185	22,479	-	1,894	-	-	-
DEFD REVENUE -2010 SERIES BOND	5,652	5,652	5,652	5,652	5,652	0.0%	0.0%
DEFERRED REVENUE - 2015 A BOND	65,436	65,436	-	65,436	65,436	-	0.0%
IOP RENTAL REVEUE	110,190	92,194	91,969	92,419	91,969	0.0%	-0.5%
BLM RENTAL REVEUE	171,176	165,848	171,568	154,407	171,568	0.0%	11.1%
ARMSTRONG RANCH RENTAL REVENUE	1,960	1,470	-	980	-	-	-
GRANT REVENUE	-	-	370,302	296,242	303,758	-18.0%	2.5%
GAIN/LOSS ON ASSET SALES	3,510	16,211	-	-	16,200	-	-
GAIN/LOSS 2010 BOND	2	2	-	-	2	-	-
FORA RUWAP REIMBURSEMENT	-	-	-	-	-	-	-
M1W RUWAP REIMBURSEMENT	-	-	-	-	-	-	-
LOAN PROCEEDS - STATE REVOLVING FUND <sup>1</sup>	-	-	-	-	-	-	-
NEW DEBT PROCEEDS	-	-	-	-	2,150,000	-	-
<b>TOTAL NON OPERATING REVENUES</b>	<b>4,566,754</b>	<b>4,026,499</b>	<b>4,078,631</b>	<b>4,101,688</b>	<b>2,749,775</b>	<b>-32.6%</b>	<b>-33.0%</b>
<b>TOTAL REVENUE</b>	<b>11,591,790</b>	<b>12,556,299</b>	<b>11,909,801</b>	<b>11,866,649</b>	<b>11,773,123</b>	<b>-1.1%</b>	<b>-0.8%</b>

Marina Coast Water District

MARINA COAST WATER DISTRICT  
REVENUE BUDGET FOR FY 2019-2020

ACCOUNT NAME	ORD SEWER				2019-2020 PROPOSED	BUD vs BUD % CHANGE	BUD vs EST % CHANGE
	2016-2017 ACTUAL	2017-2018 ACTUAL	2018-2019 ADOPTED	2018-2019 ESTIMATED			
WATER SALES RESIDENTIAL	-	-	-	-	-	-	-
WATER SALES BUSINESS	-	-	-	-	-	-	-
WATER SALES SCHOOLS	-	-	-	-	-	-	-
WATER SALES MULTIPLES	-	-	-	-	-	-	-
WATER SALES GOVERNMENT	-	-	-	-	-	-	-
FIRE SYSTEM CHARGE	-	-	-	-	-	-	-
HYDRANT METER WATER SALES	-	-	-	-	-	-	-
OTHER WATER SALES	-	-	-	-	-	-	-
LATE CHARGE FEES	-	-	-	-	-	-	-
BACKFLOW REVENUE	-	-	-	-	-	-	-
FLAT RATE ACCOUNTS	-	-	-	-	-	-	-
RECLAIMED WATER SALES	-	-	-	-	-	-	-
PLAN CHECK/PERMIT FEES	13,830	12,440	14,000	10,730	11,000	-21.4%	2.5%
MAINTENANCE REVENUE	-	-	-	-	-	-	-
METER FEES	-	-	-	-	-	-	-
WHEELING CHARGE	-	-	-	-	-	-	-
DEVELOPER FEES	123,056	116,689	110,000	122,638	105,000	-4.5%	-14.4%
SEWER SALES BUSINESS	2,329,203	2,587,333	783,367	530,748	557,285	-28.9%	5.0%
SEWER SALES RESIDENTIAL	-	-	1,949,290	2,313,258	2,405,789	23.4%	4.0%
<b>TOTAL OPERATING REVENUES</b>	<b>2,466,089</b>	<b>2,716,461</b>	<b>2,856,657</b>	<b>2,977,374</b>	<b>3,079,074</b>	<b>7.8%</b>	<b>3.4%</b>
CAPITAL SURCHARGE	39,847	39,867	39,900	39,930	39,900	0.0%	-0.1%
CAPACITY CHARGES	1,281,657	1,491,557	1,152,734	680,914	677,688	-41.2%	-0.5%
INTEREST INCOME	6,951	13,111	1,572	22,684	22,700	1344.0%	0.1%
INTEREST INCOME - 2010 BOND	422	1,389	145	2,278	2,250	1451.7%	-1.2%
INTEREST INCOME - 2015 BONDS	20	144	20	132	135	575.0%	2.1%
OTHER INCOME	9,387	8,783	2,800	8,648	2,800	0.0%	-67.6%
INSURANCE REFUNDS	1,008	5,828	-	-	-	-	-
DEFD REVENUE -2010 SERIES BOND	1,583	1,583	1,583	1,583	1,583	0.0%	0.0%
DEFERRED REVENUE - 2015 A BOND	21,812	21,812	-	21,812	21,812	-	0.0%
IOP RENTAL REVEUE	30,853	25,814	25,751	25,877	25,751	0.0%	-0.5%
BLM RENTAL REVEUE	47,929	46,437	48,039	43,234	48,039	0.0%	11.1%
ARMSTRONG RANCH RENTAL REVENUE	549	412	-	274	-	-	-
GRANT REVENUE	-	-	-	-	-	-	-
GAIN/LOSS ON ASSET SALES	845	4,205	-	-	-	-	-
GAIN/LOSS 2010 BOND	1	0	-	-	-	-	-
FORA RUWAP REIMBURSEMENT	-	-	-	-	-	-	-
M1W RUWAP REIMBURSEMENT	-	-	-	-	-	-	-
LOAN PROCEEDS - STATE REVOLVING FUND <sup>1</sup>	-	-	-	-	-	-	-
NEW DEBT PROCEEDS	-	-	-	-	3,500,000	-	-
<b>TOTAL NON OPERATING REVENUES</b>	<b>1,442,862</b>	<b>1,660,943</b>	<b>1,272,544</b>	<b>847,367</b>	<b>842,658</b>	<b>-33.8%</b>	<b>-0.6%</b>
<b>TOTAL REVENUE</b>	<b>3,908,951</b>	<b>4,377,404</b>	<b>4,129,201</b>	<b>3,824,741</b>	<b>3,921,733</b>	<b>-5.0%</b>	<b>2.5%</b>

Marina Coast Water District

MARINA COAST WATER DISTRICT  
REVENUE BUDGET FOR FY 2019-2020

ACCOUNT NAME	RUWAP				2019-2020 PROPOSED	BUD vs BUD % CHANGE	BUD vs EST % CHANGE
	2016-2017 ACTUAL	2017-2018 ACTUAL	2018-2019 ADOPTED	2018-2019 ESTIMATED			
WATER SALES RESIDENTIAL	-	-	-	-	-	-	-
WATER SALES BUSINESS	-	-	-	-	-	-	-
WATER SALES SCHOOLS	-	-	-	-	-	-	-
WATER SALES MULTIPLES	-	-	-	-	-	-	-
WATER SALES GOVERNMENT	-	-	-	-	-	-	-
FIRE SYSTEM CHARGE	-	-	-	-	-	-	-
HYDRANT METER WATER SALES	-	-	-	-	-	-	-
OTHER WATER SALES	-	-	-	-	-	-	-
LATE CHARGE FEES	-	-	-	-	-	-	-
BACKFLOW REVENUE	-	-	-	-	-	-	-
FLAT RATE ACCOUNTS	-	-	-	-	-	-	-
RECLAIMED WATER SALES	-	-	-	-	-	-	-
PLAN CHECK/PERMIT FEES	-	-	-	-	-	-	-
MAINTENANCE REVENUE	-	-	-	-	-	-	-
METER FEES	-	-	-	-	-	-	-
WHEELING CHARGE	-	-	-	-	-	-	-
DEVELOPER FEES	-	-	-	-	-	-	-
SEWER SALES BUSINESS	-	-	-	-	-	-	-
SEWER SALES RESIDENTIAL	-	-	-	-	-	-	-
<b>TOTAL OPERATING REVENUES</b>	-	-	-	-	-	-	-
CAPITAL SURCHARGE	-	-	-	-	-	-	-
CAPACITY CHARGES	-	-	-	-	-	-	-
INTEREST INCOME	-	-	-	-	-	-	-
INTEREST INCOME - 2010 BOND	-	-	-	-	-	-	-
INTEREST INCOME - 2015 BONDS	29	206	35	190	200	471.4%	5.2%
OTHER INCOME	-	-	-	-	-	-	-
INSURANCE REFUNDS	-	-	-	-	-	-	-
DEFD REVENUE -2010 SERIES BOND	-	-	-	-	-	-	-
DEFERRED REVENUE - 2015 A BOND	31,355	31,355	31,355	31,355	31,355	0.0%	0.0%
IOP RENTAL REVEUE	-	-	-	-	-	-	-
BLM RENTAL REVEUE	-	-	-	-	-	-	-
ARMSTRONG RANCH RENTAL REVENUE	-	-	-	-	-	-	-
GRANT REVENUE	-	-	-	-	-	-	-
GAIN/LOSS ON ASSET SALES	-	-	-	-	-	-	-
GAIN/LOSS 2010 BOND	-	-	-	-	-	-	-
FORA RUWAP REIMBURSEMENT	555,104	3,596,221	1,200,000	1,200,000	1,000,000	-16.7%	-16.7%
M1W RUWAP REIMBURSEMENT	-	7,079,937	10,464,000	3,560,063	-	-	-
LOAN PROCEEDS - STATE REVOLVING FUND <sup>1</sup>	-	-	6,000,000	9,057,011	11,440,000	90.7%	26.3%
NEW DEBT PROCEEDS	-	-	-	-	-	-	-
<b>TOTAL NON OPERATING REVENUES</b>	<b>586,488</b>	<b>10,707,719</b>	<b>17,695,390</b>	<b>13,848,619</b>	<b>12,471,555</b>	<b>-29.5%</b>	<b>-9.9%</b>
<b>TOTAL REVENUE</b>	<b>586,488</b>	<b>10,707,719</b>	<b>17,695,390</b>	<b>13,848,619</b>	<b>12,471,555</b>	<b>-29.5%</b>	<b>-9.9%</b>

Marina Coast Water District

MARINA COAST WATER DISTRICT  
REVENUE BUDGET FOR FY 2019-2020

ACCOUNT NAME	2016-2017 ACTUAL	2017-2018 ACTUAL	2018-2019 ADOPTED	TOTAL 2018-2019 ESTIMATED	2019-2020 PROPOSED	BUD vs BUD % CHANGE	BUD vs EST % CHANGE
WATER SALES RESIDENTIAL	2,941,605	4,095,467	4,519,695	4,308,914	4,524,360	0.1%	5.0%
WATER SALES BUSINESS	717,425	932,959	1,098,292	1,192,183	2,114,108	92.5%	77.3%
WATER SALES SCHOOLS	282,966	312,332	376,960	359,821	385,008	2.1%	7%
WATER SALES MULTIPLES	366,390	420,277	463,234	433,565	463,915	0.1%	7.0%
WATER SALES GOVERNMENT	63,737	90,909	112,553	104,934	112,279	-0.2%	7.0%
FIRE SYSTEM CHARGE	184,522	202,013	177,361	227,649	241,308	36.1%	6.0%
HYDRANT METER WATER SALES	172,977	286,897	150,000	227,676	243,613	62.4%	7.0%
OTHER WATER SALES	8,336	8,336	8,575	9,204	9,756	13.8%	6.0%
LATE CHARGE FEES	93,481	160,326	50,000	99,561	100,000	100.0%	0.4%
BACKFLOW REVENUE	27,818	29,331	28,000	28,000	30,000	7.1%	7.1%
FLAT RATE ACCOUNTS	1,382,768	925,653	50,000	151,777	50,000	0.0%	-67.1%
RECLAIMED WATER SALES	-	-	-	-	-	-	-
PLAN CHECK/PERMIT FEES	28,050	27,090	39,000	35,580	36,000	-7.7%	1.2%
MAINTENANCE REVENUE	-	-	-	-	-	-	-
METER FEES	295,857	656,598	275,000	300,609	300,000	9.1%	-0.2%
WHEELING CHARGE	24,000	24,000	24,000	24,000	24,000	0.0%	0.0%
DEVELOPER FEES	571,991	486,240	582,500	394,856	505,000	-13.3%	27.9%
SEWER SALES BUSINESS	2,329,203	2,587,333	783,367	530,748	557,285	-28.9%	5.0%
SEWER SALES RESIDENTIAL	-	-	1,949,290	2,313,258	2,405,789	23.4%	4.0%
<b>TOTAL OPERATING REVENUES</b>	<b>9,491,125</b>	<b>11,246,261</b>	<b>10,687,827</b>	<b>10,742,335</b>	<b>12,102,422</b>	<b>13.2%</b>	<b>12.7%</b>
CAPITAL SURCHARGE	206,899	207,838	206,200	203,281	204,900	-0.6%	0.8%
CAPACITY CHARGES	5,289,879	4,921,339	4,388,774	3,917,268	2,511,978	-42.8%	-35.9%
INTEREST INCOME	30,074	64,507	25,572	98,606	98,700	286.0%	0.1%
INTEREST INCOME - 2010 BOND	1,929	6,350	2,045	10,415	10,350	406.1%	-0.6%
INTEREST INCOME - 2015 BONDS	111	781	155	719	735	374.2%	2.2%
OTHER INCOME	14,062	11,449	13,600	9,146	14,200	4.4%	55.3%
INSURANCE REFUNDS	5,193	28,307	-	1,894	-	-	-
DEFD REVENUE -2010 SERIES BOND	7,235	7,235	7,235	7,235	7,235	0.0%	0.0%
DEFERRED REVENUE - 2015 A BOND	118,602	118,602	31,355	118,603	118,603	278.3%	0.0%
IOP RENTAL REVEUE	141,043	118,008	117,720	118,297	117,720	0.0%	-0.5%
BLM RENTAL REVEUE	219,105	212,285	219,607	197,641	219,607	0.0%	11.1%
ARMSTRONG RANCH RENTAL REVENUE	2,509	1,882	-	1,254	-	-	-
GRANT REVENUE	-	-	370,302	296,242	303,758	-18.0%	2.5%
GAIN/LOSS ON ASSET SALES	4,355	20,417	-	-	16,200	-	-
GAIN/LOSS 2010 BOND	3	2	-	-	2	-	-
FORA RUWAP REIMBURSEMENT	555,104	3,596,221	1,200,000	1,200,000	1,000,000	-16.7%	-16.7%
M1W RUWAP REIMBURSEMENT	-	7,079,937	10,464,000	3,560,063	-	-	-
LOAN PROCEEDS - STATE REVOLVING FUND <sup>1</sup>	-	-	6,000,000	9,057,011	11,440,000	90.7%	26.3%
NEW DEBT PROCEEDS	-	-	-	-	5,650,000	-	-
<b>TOTAL NON OPERATING REVENUES</b>	<b>6,596,105</b>	<b>16,395,161</b>	<b>23,046,565</b>	<b>18,797,674</b>	<b>21,713,988</b>	<b>-5.8%</b>	<b>15.5%</b>
<b>TOTAL REVENUE</b>	<b>16,087,229</b>	<b>27,641,421</b>	<b>33,734,392</b>	<b>29,540,009</b>	<b>33,816,410</b>	<b>0.2%</b>	<b>14.5%</b>

**MARINA COAST WATER DISTRICT  
ADMIN BUDGET FOR FY 2019-2020**

ACCOUNT NAME	ORD WATER						
	2016-2017 ACTUAL	2017-2018 ACTUAL	2018-2019 ADOPTED	2018-2019 ESTIMATED	2019-2020 PROPOSED	BUD vs BUD % CHANGE	BUD vs EST % CHANGE
WAGES - ADM	686,800	746,476	813,620	787,354	903,730	11.1%	14.8%
WAGES ALLOCATED TO CAPITAL	-	-	-	-	-	-	-
OVERTIME	27,270	33,972	21,738	32,220	28,779	32.4%	-10.7%
FICA EXPENSE	37,381	41,675	47,979	42,649	53,267	11.0%	24.9%
MEDI EXPENSE	9,648	10,549	12,113	12,102	13,522	11.6%	11.7%
MEDICAL INSURANCE EXPENSE	122,625	145,366	162,535	143,463	201,936	24.2%	40.8%
DENTAL INSURANCE EXPENSE	5,451	6,038	6,761	6,002	8,341	23.4%	39.0%
VISION INSURANCE EXPENSE	1,537	1,714	2,535	1,718	2,755	8.7%	60.4%
WORKERS COMP. INSURANCE	5,754	6,124	9,813	9,121	10,665	8.7%	16.9%
LIFE INSURANCE EXPENSE	2,375	2,855	2,926	3,373	3,219	10.0%	-4.6%
UNIFORM BENEFIT	1,278	901	1,053	1,046	1,112	5.6%	6.3%
BOOT BENEFIT	346	374	216	364	228	5.6%	-37.4%
SUI EXPENSE	1,927	1,474	2,121	580	2,238	5.5%	285.7%
ETT EXPENSE	66	61	64	24	68	6.0%	177.9%
CAR ALLOWANCE EXPENSE	2,916	2,916	2,916	3,162	3,078	5.6%	-2.7%
DISABILITY PLAN	2,572	2,781	2,200	2,503	2,445	11.2%	-2.3%
CALPERS RETIREMENT (ER) - Classic Plan	55,586	60,346	73,879	69,242	84,827	14.8%	22.5%
CALPERS RETIREMENT (EE) - Classic Plan	38,002	38,262	41,579	39,360	41,399	-0.4%	5.2%
CALPERS-62 RETIREMENT (ER)	6,763	11,615	18,748	18,399	23,483	100.0%	27.6%
CALPERS-62 RETIREMENT (EE)	-	-	-	-	-	100.0%	-
PENSION EXPENSE	106,131	6,404	-	-	-	100.0%	-
PARS RETIREMENT	69,706	69,706	-	-	-	-	-
OPEB EXPENSE	33,668	68,385	35,100	29,160	39,900	13.7%	36.8%
TUITION REIMBURSEMENT	4,716	2,084	-	-	-	-	-
BOARD COMPENSATION	2,214	2,457	2,025	1,971	2,565	26.7%	30.1%
<b>TOTAL SALARY &amp; BENEFIT</b>	<b>1,224,730</b>	<b>1,262,535</b>	<b>1,259,921</b>	<b>1,203,812</b>	<b>1,427,556</b>	<b>13.3%</b>	<b>18.6%</b>
LIABILITY INSURANCE	55,419	53,117	5,670	48,674	54,150	855.0%	11.3%
LIABILITY CLAIMS	-	-	-	-	-	-	-
PROPERTY INSURANCE	16,405	16,363	14,580	14,366	14,820	1.6%	3.2%
AUTO INSURANCE	3,222	3,273	3,510	3,138	3,420	-2.6%	9.0%
OFFICE POWER/GAS	9,383	8,691	8,100	7,870	8,550	5.6%	8.6%
BUILDING SECURITY	1,239	1,307	2,700	2,811	2,964	9.8%	5.4%
TRASH SERVICES	4,660	5,174	5,940	5,039	5,700	-4.0%	13.1%
ANSWERING SERVICE	1,684	1,470	1,620	1,260	1,710	5.6%	35.7%
PHONE	21,314	25,431	27,000	22,436	24,510	-9.2%	9.2%
RENT/LEASE EQUIPMENT	13,866	10,320	10,530	9,252	16,929	60.8%	83.0%
POSTAGE	7,629	10,655	24,300	17,611	26,790	10.2%	52.1%
PRINTING	5,507	8,352	13,500	11,567	17,100	26.7%	47.8%
OFFICE SUPPLY	5,336	3,604	4,860	4,152	5,130	5.6%	23.6%
GENERAL SUPPLY	6,228	9,072	5,940	6,311	6,840	15.2%	8.4%
COMPUTERS/DATA PROCESSING	17,912	13,956	5,940	7,613	8,550	43.9%	12.3%
SOFTWARE AND LICENSING	12,843	31,604	54,000	31,543	66,278	22.7%	110.1%
ADVERTISEMENT	11,065	10,647	5,400	6,641	8,550	58.3%	28.7%
MAINTENANCE AGREEMENTS	34,129	21,843	7,047	21,407	26,135	270.9%	22.1%
HOSPITALITY & AWARDS	1,854	1,334	2,160	2,191	2,280	5.6%	4.1%
BOARD MEETING VIDEO RECORDING	3,191	3,413	3,240	2,813	3,420	5.6%	21.6%
ACCOUNTING SERVICES	17,225	13,742	19,980	15,498	21,090	5.6%	36.1%
CONSULTING SERVICES	143,193	233,735	150,120	104,900	171,000	13.9%	63.0%
LEGAL FEES	183,605	294,266	135,000	738,337	675,000	400.0%	-8.6%
CONFERENCE ATTENDANCE	4,343	1,927	6,647	5,810	7,100	6.8%	22.2%
CONFERENCE (BOD)	178	400	1,350	65	1,425	5.6%	2099.1%
EDUCATION EXPENSES	5,002	6,538	8,889	4,969	9,415	5.9%	89.5%
TRAVEL	6,930	6,438	8,572	12,678	11,208	30.8%	-11.6%
SAFETY	529	952	1,350	969	1,425	5.6%	47.0%

**MARINA COAST WATER DISTRICT  
ADMIN BUDGET FOR FY 2019-2020**

ACCOUNT NAME	ORD WATER						
	2016-2017 ACTUAL	2017-2018 ACTUAL	2018-2019 ADOPTED	2018-2019 ESTIMATED	2019-2020 PROPOSED	BUD vs BUD % CHANGE	BUD vs EST % CHANGE
MEMBERSHIPS & DUES	11,265	15,006	16,000	16,483	16,500	3.1%	0.1%
PERMITS	20,185	17,900	21,600	20,737	22,800	5.6%	10.0%
MISCELLANEOUS	-	-	-	-	-	-	-
BANK & ADMINISTRATION FEE	51,092	61,671	51,300	72,639	76,950	50.0%	5.9%
BANK FEE - 2010 BOND	-	-	648	648	684	5.6%	5.6%
INTEREST EXPENSE	182	74	108	48	114	5.6%	135.2%
BLM INTEREST EXP - HCC LOAN	35,604	78,962	8,600	74,698	74,256	763.4%	-0.6%
2010 BOND INTEREST EXPENSE	99,517	83,416	64,625	64,625	43,375	-32.9%	-32.9%
2015 BOND INTEREST EXPENSE	626,633	613,571	620,424	620,424	601,992	-3.0%	-3.0%
LEASED EQUIPMENT INTEREST	-	-	-	-	-	-	-
BLM INT EXP LINE OF CREDIT	1,735	-	-	-	-	-	-
BLM INT EXP COMMERCIAL LOAN	3,762	-	-	-	-	-	-
BLM INT EXP CONSTRUCTION LOAN	33,814	-	-	-	-	-	-
BLM LOAN FEES	12,723	-	-	-	-	-	-
RUWAP LOC INTEREST EXPENSE	-	-	-	-	-	-	-
METER READER GEN MAINT/EQUIP	4,755	1,286	405	801	1,140	181.5%	42.3%
METERS (METER READER ONLY)	29,547	105,511	54,000	68,175	105,450	95.3%	54.7%
IOP GENERAL EXPENSES	1,611	1,529	2,000	1,284	1,500	-25.0%	16.8%
IOP EXPENSE	5,500	5,500	5,500	5,500	5,500	0.0%	0.0%
IOP PERMITS	359	-	650	-	-	-	-
IOP MAINTENANCE	4,270	1,358	500	1,287	500	0.0%	-61.2%
BLM GENERAL EXPENSES	21,079	21,484	22,000	22,413	23,000	4.5%	2.6%
BLM ASSOCIATION FEES	5,500	5,500	5,500	5,500	5,500	0.0%	0.0%
BLM MAINTENANCE	7,555	11,634	3,715	1,922	2,000	-46.2%	4.0%
FRANCHISE FEE	349,363	471,602	537,463	381,214	396,463	-26.2%	4.0%
FORA ADMIN./LIAISON FEES	25,000	25,000	25,000	25,000	25,000	0.0%	0.0%
MEMBERSHIP ON FORA BOARD	37,000	77,301	60,710	61,924	64,401	6.1%	4.0%
BAD DEBT EXPENSE	-	-	13,500	13,500	14,250	5.6%	5.6%
RW-0156 RECYCLED WATER EXPENSE	-	-	-	-	-	-	-
<b>TOTAL DEPARTMENT EXPENSE</b>	<b>1,983,272</b>	<b>2,397,501</b>	<b>2,052,733</b>	<b>2,568,746</b>	<b>2,682,864</b>	<b>30.7%</b>	<b>4.4%</b>
<b>TOTAL EXPENSE</b>	<b>3,208,002</b>	<b>3,660,037</b>	<b>3,312,654</b>	<b>3,772,558</b>	<b>4,110,420</b>	<b>24.1%</b>	<b>9.0%</b>

**MARINA COAST WATER DISTRICT  
ADMIN BUDGET FOR FY 2019-2020**

ACCOUNT NAME	ORD SEWER						
	2016-2017	2017-2018	2018-2019	2018-2019	2019-2020	BUD vs BUD	BUD vs EST
	ACTUAL	ACTUAL	ADOPTED	ESTIMATED	PROPOSED	% CHANGE	% CHANGE
WAGES - ADM	154,972	180,862	226,006	211,755	221,969	-1.8%	4.8%
WAGES ALLOCATED TO CAPITAL	-	-	-	-	-	-	-
OVERTIME	6,349	8,586	6,038	8,880	7,068	17.1%	-20.4%
FICA EXPENSE	8,309	10,002	13,328	11,455	13,083	-1.8%	14.2%
MEDI EXPENSE	2,161	2,547	3,365	3,270	3,321	-1.3%	1.6%
MEDICAL INSURANCE EXPENSE	23,041	28,907	45,149	36,395	49,598	9.9%	36.3%
DENTAL INSURANCE EXPENSE	1,012	1,175	1,878	1,526	2,049	9.1%	34.2%
VISION INSURANCE EXPENSE	322	385	704	454	677	-3.9%	48.9%
WORKERS COMP. INSURANCE	958	1,129	2,726	2,222	2,620	-3.9%	17.9%
LIFE INSURANCE EXPENSE	572	740	813	937	791	-2.8%	-15.6%
UNIFORM BENEFIT	195	-	293	208	273	-6.8%	31.5%
BOOT BENEFIT	-	-	-	-	-	-	-
SUI EXPENSE	387	337	589	138	550	-6.7%	298.9%
ETT EXPENSE	13	14	18	6	17	-7.4%	189.7%
CAR ALLOWANCE EXPENSE	700	756	810	878	756	-6.7%	-13.9%
DISABILITY PLAN	619	721	611	695	601	-1.7%	-13.6%
CALPERS RETIREMENT (ER) - Classic Plan	12,780	14,947	20,522	19,106	20,835	1.5%	9.0%
CALPERS RETIREMENT (EE) - Classic Plan	8,595	9,282	11,550	10,822	10,168	-12.0%	-6.0%
CALPERS-62 RETIREMENT (ER)	1,334	2,668	5,208	4,763	5,768	100.0%	21.1%
CALPERS-62 RETIREMENT (EE)	-	-	-	-	-	100.0%	-
PENSION EXPENSE	25,550	1,660	-	-	-	100.0%	-
PARS RETIREMENT	16,781	18,072	-	-	-	-	-
OPEB EXPENSE	7,614	17,729	9,750	8,100	9,800	0.5%	21.0%
TUITION REIMBURSEMENT	-	-	-	-	-	-	-
BOARD COMPENSATION	533	637	563	548	630	11.9%	15.1%
<b>TOTAL SALARY &amp; BENEFIT</b>	<b>272,796</b>	<b>301,157</b>	<b>349,921</b>	<b>322,159</b>	<b>350,572</b>	<b>0.2%</b>	<b>8.8%</b>
LIABILITY INSURANCE	13,099	13,510	1,575	13,280	13,300	744.4%	0.2%
LIABILITY CLAIMS	-	4,610	-	-	-	-	-
PROPERTY INSURANCE	3,475	3,698	4,050	3,684	3,640	-10.1%	-1.2%
AUTO INSURANCE	806	863	975	872	840	-13.8%	-3.6%
OFFICE POWER/GAS	2,204	2,184	2,250	2,150	2,100	-6.7%	-2.3%
BUILDING SECURITY	298	339	750	781	728	-2.9%	-6.8%
TRASH SERVICES	1,122	1,341	1,650	1,400	1,400	-15.2%	0.0%
ANSWERING SERVICE	406	381	450	350	420	-6.7%	20.0%
PHONE	4,875	6,661	7,500	6,163	6,020	-19.7%	-2.3%
RENT/LEASE EQUIPMENT	3,338	2,676	2,925	2,570	4,158	42.2%	61.8%
POSTAGE	6,345	9,455	6,750	8,518	6,580	-2.5%	-22.8%
PRINTING	4,680	6,038	3,750	5,157	4,200	12.0%	-18.6%
OFFICE SUPPLY	1,320	934	1,350	1,153	1,260	-6.7%	9.3%
GENERAL SUPPLY	1,507	2,352	1,650	1,753	1,680	1.8%	-4.2%
COMPUTERS/DATA PROCESSING	2,911	3,616	1,650	2,115	2,100	27.3%	-0.7%
SOFTWARE AND LICENSING	2,799	8,481	15,000	7,595	16,300	8.7%	114.6%
ADVERTISEMENT	2,416	2,626	1,500	1,679	2,100	40.0%	25.1%
MAINTENANCE AGREEMENTS	11,236	6,511	1,958	8,046	6,419	227.8%	-20.2%
HOSPITALITY & AWARDS	427	301	600	609	560	-6.7%	-8.0%
BOARD MEETING VIDEO RECORDING	768	885	900	782	840	-6.7%	7.5%
ACCOUNTING SERVICES	4,136	3,638	5,550	4,305	5,180	-6.7%	20.3%
CONSULTING SERVICES	25,926	50,795	41,700	29,139	42,000	0.7%	44.1%
LEGAL FEES	23,443	40,359	37,500	40,308	35,000	-6.7%	-13.2%
CONFERENCE ATTENDANCE	394	71	175	1,200	1,643	838.9%	36.9%
CONFERENCE (BOD)	43	42	375	18	350	-6.7%	1844.4%
EDUCATION EXPENSES	892	1,339	3,605	2,522	4,056	12.5%	60.8%
TRAVEL	571	1,305	2,287	2,198	2,950	29.0%	34.2%
SAFETY	134	247	375	650	350	-6.7%	-46.2%

**MARINA COAST WATER DISTRICT  
ADMIN BUDGET FOR FY 2019-2020**

ACCOUNT NAME	ORD SEWER						
	2016-2017 ACTUAL	2017-2018 ACTUAL	2018-2019 ADOPTED	2018-2019 ESTIMATED	2019-2020 PROPOSED	BUD vs BUD % CHANGE	BUD vs EST % CHANGE
MEMBERSHIPS & DUES	2,696	3,890	2,900	3,811	3,900	34.5%	2.3%
PERMITS	1,357	1,441	6,000	5,256	5,600	-6.7%	6.5%
MISCELLANEOUS	-	-	-	-	-	-	-
BANK & ADMINISTRATION FEE	12,327	16,005	14,250	20,181	18,900	32.6%	-6.3%
BANK FEE - 2010 BOND	-	-	180	180	168	-6.7%	-6.7%
INTEREST EXPENSE	41	19	30	13	28	-6.7%	108.2%
BLM INTEREST EXP - HCC LOAN	9,969	22,109	2,400	20,916	20,792	766.3%	-0.6%
2010 BOND INTEREST EXPENSE	27,864	23,357	18,095	18,095	12,145	-32.9%	-32.9%
2015 BOND INTEREST EXPENSE	207,741	203,387	206,808	206,808	200,664	-3.0%	-3.0%
LEASED EQUIPMENT INTEREST	-	-	-	-	-	-	-
BLM INT EXP LINE OF CREDIT	486	-	-	-	-	-	-
BLM INT EXP COMMERCIAL LOAN	1,053	-	-	-	-	-	-
BLM INT EXP CONSTRUCTION LOAN	9,468	-	-	-	-	-	-
BLM LOAN FEES	3,562	-	-	-	-	-	-
RUWAP LOC INTEREST EXPENSE	-	-	-	-	-	-	-
METER READER GEN MAINT/EQUIP	-	-	-	-	-	-	-
METERS (METER READER ONLY)	-	-	-	-	-	-	-
IOP GENERAL EXPENSES	451	434	550	360	400	-27.3%	11.2%
IOP EXPENSE	1,540	1,540	1,540	1,540	1,540	0.0%	0.0%
IOP PERMITS	101	-	200	-	-	-	-
IOP MAINTENANCE	1,196	380	150	360	150	0.0%	-58.4%
BLM GENERAL EXPENSES	5,902	6,017	5,900	6,276	6,300	6.8%	0.4%
BLM ASSOCIATION FEES	1,540	1,540	1,540	1,540	1,540	0.0%	0.0%
BLM MAINTENANCE	2,115	3,257	945	538	750	-20.6%	39.3%
FRANCHISE FEE	136,450	158,337	159,094	142,200	147,888	-7.0%	4.0%
FORA ADMIN./LIAISON FEES	-	-	-	-	-	-	-
MEMBERSHIP ON FORA BOARD	-	26,026	26,218	26,742	27,812	6.1%	4.0%
BAD DEBT EXPENSE	-	-	3,750	3,750	3,500	-6.7%	-6.7%
RW-0156 RECYCLED WATER EXPENSE	-	-	-	-	-	-	-
<b>TOTAL DEPARTMENT EXPENSE</b>	<b>545,759</b>	<b>643,422</b>	<b>599,500</b>	<b>607,563</b>	<b>618,251</b>	<b>3.1%</b>	<b>1.8%</b>
<b>TOTAL EXPENSE</b>	<b>818,555</b>	<b>944,579</b>	<b>949,421</b>	<b>929,722</b>	<b>968,823</b>	<b>2.0%</b>	<b>4.2%</b>



**MARINA COAST WATER DISTRICT  
ADMIN BUDGET FOR FY 2019-2020**

ACCOUNT NAME	RUWAP						
	2016-2017 ACTUAL	2017-2018 ACTUAL	2018-2019 ADOPTED	2018-2019 ESTIMATED	2019-2020 PROPOSED	BUD vs BUD % CHANGE	BUD vs EST % CHANGE
WAGES - ADM	-	-	-	-	-	-	-
WAGES ALLOCATED TO CAPITAL	-	-	-	-	-	-	-
OVERTIME	-	-	-	-	-	-	-
FICA EXPENSE	-	-	-	-	-	-	-
MEDI EXPENSE	-	-	-	-	-	-	-
MEDICAL INSURANCE EXPENSE	-	-	-	-	-	-	-
DENTAL INSURANCE EXPENSE	-	-	-	-	-	-	-
VISION INSURANCE EXPENSE	-	-	-	-	-	-	-
WORKERS COMP. INSURANCE	-	-	-	-	-	-	-
LIFE INSURANCE EXPENSE	-	-	-	-	-	-	-
UNIFORM BENEFIT	-	-	-	-	-	-	-
BOOT BENEFIT	-	-	-	-	-	-	-
SUI EXPENSE	-	-	-	-	-	-	-
ETT EXPENSE	-	-	-	-	-	-	-
CAR ALLOWANCE EXPENSE	-	-	-	-	-	-	-
DISABILITY PLAN	-	-	-	-	-	-	-
CALPERS RETIREMENT (ER) - Classic Plan	-	-	-	-	-	-	-
CALPERS RETIREMENT (EE) - Classic Plan	-	-	-	-	-	-	-
CALPERS-62 RETIREMENT (ER)	-	-	-	-	-	-	-
CALPERS-62 RETIREMENT (EE)	-	-	-	-	-	-	-
PENSION EXPENSE	-	-	-	-	-	-	-
PARS RETIREMENT	-	-	-	-	-	-	-
OPEB EXPENSE	-	-	-	-	-	-	-
TUITION REIMBURSEMENT	-	-	-	-	-	-	-
BOARD COMPENSATION	-	-	-	-	-	-	-
<b>TOTAL SALARY &amp; BENEFIT</b>	-	-	-	-	-	-	-
LIABILITY INSURANCE	-	-	-	-	-	-	-
LIABILITY CLAIMS	-	-	-	-	-	-	-
PROPERTY INSURANCE	-	-	-	-	-	-	-
AUTO INSURANCE	-	-	-	-	-	-	-
OFFICE POWER/GAS	-	-	-	-	-	-	-
BUILDING SECURITY	-	-	-	-	-	-	-
TRASH SERVICES	-	-	-	-	-	-	-
ANSWERING SERVICE	-	-	-	-	-	-	-
PHONE	-	-	-	-	-	-	-
RENT/LEASE EQUIPMENT	-	-	-	-	-	-	-
POSTAGE	-	-	-	-	-	-	-
PRINTING	-	-	-	-	-	-	-
OFFICE SUPPLY	-	-	-	-	-	-	-
GENERAL SUPPLY	-	-	-	-	-	-	-
COMPUTERS/DATA PROCESSING	-	-	-	-	-	-	-
SOFTWARE AND LICENSING	-	-	-	-	-	-	-
ADVERTISEMENT	-	-	-	-	-	-	-
MAINTENANCE AGREEMENTS	-	-	-	-	-	-	-
HOSPITALITY & AWARDS	-	-	-	-	-	-	-
BOARD MEETING VIDEO RECORDING	-	-	-	-	-	-	-
ACCOUNTING SERVICES	-	-	-	-	-	-	-
CONSULTING SERVICES	-	-	-	-	-	-	-
LEGAL FEES	-	-	-	-	-	-	-
CONFERENCE ATTENDANCE	-	-	-	-	-	-	-
CONFERENCE (BOD)	-	-	-	-	-	-	-
EDUCATION EXPENSES	-	-	-	-	-	-	-
TRAVEL	-	-	-	-	-	-	-
SAFETY	-	-	-	-	-	-	-

**MARINA COAST WATER DISTRICT  
ADMIN BUDGET FOR FY 2019-2020**

ACCOUNT NAME	RUWAP					BUD vs BUD % CHANGE	BUD vs EST % CHANGE
	2016-2017 ACTUAL	2017-2018 ACTUAL	2018-2019 ADOPTED	2018-2019 ESTIMATED	2019-2020 PROPOSED		
MEMBERSHIPS & DUES	-	-	-	-	-	-	-
PERMITS	-	-	-	-	-	-	-
MISCELLANEOUS	-	-	-	-	-	-	-
BANK & ADMINISTRATION FEE	-	75	-	180	200	-	11.1%
BANK FEE - 2010 BOND	-	-	-	-	-	-	-
INTEREST EXPENSE	-	-	-	-	-	-	-
BLM INTEREST EXP - HCC LOAN	-	-	-	-	-	-	-
2010 BOND INTEREST EXPENSE	-	-	-	-	-	-	-
2015 BOND INTEREST EXPENSE	306,252	299,993	297,286	297,286	288,454	-3.0%	-3.0%
LEASED EQUIPMENT INTEREST	-	-	-	-	-	-	-
BLM INT EXP LINE OF CREDIT	-	-	-	-	-	-	-
BLM INT EXP COMMERCIAL LOAN	-	-	-	-	-	-	-
BLM INT EXP CONSTRUCTION LOAN	-	-	-	-	-	-	-
BLM LOAN FEES	-	-	-	-	-	-	-
RUWAP LOC INTEREST EXPENSE	-	50,524	20,000	118,471	100,000	400.0%	-15.6%
METER READER GEN MAINT/EQUIP	-	-	-	-	-	-	-
METERS (METER READER ONLY)	-	-	-	-	-	-	-
IOP GENERAL EXPENSES	-	-	-	-	-	-	-
IOP EXPENSE	-	-	-	-	-	-	-
IOP PERMITS	-	-	-	-	-	-	-
IOP MAINTENANCE	-	-	-	-	-	-	-
BLM GENERAL EXPENSES	-	-	-	-	-	-	-
BLM ASSOCIATION FEES	-	-	-	-	-	-	-
BLM MAINTENANCE	-	-	-	-	-	-	-
FRANCHISE FEE	-	-	-	-	-	-	-
FORA ADMIN./LIAISON FEES	-	-	-	-	-	-	-
MEMBERSHIP ON FORA BOARD	-	-	-	-	-	-	-
BAD DEBT EXPENSE	-	-	-	-	-	-	-
RW-0156 RECYCLED WATER EXPENSE	-	1,033	4,000	59	1,000	-75.0%	1587.5%
<b>TOTAL DEPARTMENT EXPENSE</b>	<b>306,252</b>	<b>351,625</b>	<b>321,286</b>	<b>415,996</b>	<b>389,654</b>	<b>21.3%</b>	<b>-6.3%</b>
<b>TOTAL EXPENSE</b>	<b>306,252</b>	<b>351,625</b>	<b>321,286</b>	<b>415,996</b>	<b>389,654</b>	<b>21.3%</b>	<b>-6.3%</b>

**MARINA COAST WATER DISTRICT  
ADMIN BUDGET FOR FY 2019-2020**

ACCOUNT NAME	TOTAL						
	2016-2017 ACTUAL	2017-2018 ACTUAL	2018-2019 ADOPTED	2018-2019 ESTIMATED	2019-2020 PROPOSED	BUD vs BUD % CHANGE	BUD vs EST % CHANGE
WAGES - ADM	841,772	927,338	1,039,626	999,109	1,125,699	8.3%	12.7%
WAGES ALLOCATED TO CAPITAL	-	-	-	-	-	-	-
OVERTIME	33,619	42,559	27,776	41,100	35,847	29.1%	-12.8%
FICA EXPENSE	45,690	51,678	61,307	54,104	66,350	8.2%	22.6%
MEDI EXPENSE	11,809	13,097	15,478	15,372	16,843	8.8%	9.6%
MEDICAL INSURANCE EXPENSE	145,666	174,272	207,684	179,858	251,535	21.1%	39.9%
DENTAL INSURANCE EXPENSE	6,462	7,212	8,639	7,528	10,389	20.3%	38.0%
VISION INSURANCE EXPENSE	1,859	2,100	3,239	2,172	3,431	5.9%	58.0%
WORKERS COMP. INSURANCE	6,712	7,253	12,539	11,343	13,285	5.9%	17.1%
LIFE INSURANCE EXPENSE	2,946	3,595	3,739	4,310	4,009	7.2%	-7.0%
UNIFORM BENEFIT	1,473	901	1,346	1,253	1,385	2.9%	10.5%
BOOT BENEFIT	346	374	216	364	228	5.6%	-37.4%
SUI EXPENSE	2,313	1,811	2,710	718	2,788	2.9%	288.2%
ETT EXPENSE	79	75	82	30	84	3.0%	180.1%
CAR ALLOWANCE EXPENSE	3,616	3,672	3,726	4,040	3,834	2.9%	-5.1%
DISABILITY PLAN	3,192	3,502	2,811	3,199	3,046	8.4%	-4.8%
CALPERS RETIREMENT (ER) - Classic Plan	68,366	75,293	94,401	88,348	105,662	11.9%	19.6%
CALPERS RETIREMENT (EE) - Classic Plan	46,596	47,543	53,129	50,181	51,567	-2.9%	2.8%
CALPERS-62 RETIREMENT (ER)	8,097	14,283	23,956	23,162	29,251	100.0%	26.3%
CALPERS-62 RETIREMENT (EE)	-	-	-	-	-	100.0%	-
PENSION EXPENSE	131,681	8,064	-	-	-	100.0%	-
PARS RETIREMENT	86,487	87,778	-	-	-	-	-
OPEB EXPENSE	41,281	86,114	44,850	37,260	49,700	10.8%	33.4%
TUITION REIMBURSEMENT	4,716	2,084	-	-	-	-	-
BOARD COMPENSATION	2,747	3,094	2,588	2,519	3,195	23.5%	26.9%
<b>TOTAL SALARY &amp; BENEFIT</b>	<b>1,497,525</b>	<b>1,563,692</b>	<b>1,609,842</b>	<b>1,525,971</b>	<b>1,778,128</b>	<b>10.5%</b>	<b>16.5%</b>
LIABILITY INSURANCE	68,518	66,627	7,245	61,954	67,450	831.0%	8.9%
LIABILITY CLAIMS	-	4,610	-	-	-	-	-
PROPERTY INSURANCE	19,880	20,061	18,630	18,049	18,460	-0.9%	2.3%
AUTO INSURANCE	4,028	4,135	4,485	4,010	4,260	-5.0%	6.2%
OFFICE POWER/GAS	11,587	10,875	10,350	10,021	10,650	2.9%	6.3%
BUILDING SECURITY	1,538	1,646	3,450	3,592	3,692	7.0%	2.8%
TRASH SERVICES	5,782	6,516	7,590	6,439	7,100	-6.5%	10.3%
ANSWERING SERVICE	2,090	1,851	2,070	1,611	2,130	2.9%	32.2%
PHONE	26,188	32,092	34,500	28,598	30,530	-11.5%	6.8%
RENT/LEASE EQUIPMENT	17,205	12,995	13,455	11,822	21,087	56.7%	78.4%
POSTAGE	13,975	20,111	31,050	26,130	33,370	7.5%	27.7%
PRINTING	10,187	14,390	17,250	16,724	21,300	23.5%	27.4%
OFFICE SUPPLY	6,655	4,539	6,210	5,305	6,390	2.9%	20.4%
GENERAL SUPPLY	7,736	11,424	7,590	8,064	8,520	12.3%	5.7%
COMPUTERS/DATA PROCESSING	20,824	17,572	7,590	9,727	10,650	40.3%	9.5%
SOFTWARE AND LICENSING	15,642	40,085	69,000	39,139	82,578	19.7%	111.0%
ADVERTISEMENT	13,481	13,273	6,900	8,320	10,650	54.3%	28.0%
MAINTENANCE AGREEMENTS	45,364	28,355	9,005	29,453	32,554	261.5%	10.5%
HOSPITALITY & AWARDS	2,281	1,635	2,760	2,799	2,840	2.9%	1.5%
BOARD MEETING VIDEO RECORDING	3,960	4,298	4,140	3,595	4,260	2.9%	18.5%
ACCOUNTING SERVICES	21,361	17,380	25,530	19,803	26,270	2.9%	32.7%
CONSULTING SERVICES	169,119	284,530	191,820	134,039	213,000	11.0%	58.9%
LEGAL FEES	207,048	334,625	172,500	778,646	710,000	311.6%	-8.8%
CONFERENCE ATTENDANCE	4,737	1,998	6,822	7,010	8,743	28.2%	24.7%
CONFERENCE (BOD)	221	442	1,725	83	1,775	2.9%	2043.7%
EDUCATION EXPENSES	5,894	7,877	12,494	7,491	13,471	7.8%	79.8%
TRAVEL	7,501	7,743	10,859	14,876	14,158	30.4%	-4.8%
SAFETY	663	1,199	1,725	1,619	1,775	2.9%	9.6%

**MARINA COAST WATER DISTRICT  
ADMIN BUDGET FOR FY 2019-2020**

ACCOUNT NAME	TOTAL						
	2016-2017 ACTUAL	2017-2018 ACTUAL	2018-2019 ADOPTED	2018-2019 ESTIMATED	2019-2020 PROPOSED	BUD vs BUD % CHANGE	BUD vs EST % CHANGE
MEMBERSHIPS & DUES	13,960	18,896	18,900	20,294	20,400	7.9%	0.5%
PERMITS	21,542	19,341	27,600	25,993	28,400	2.9%	9.3%
MISCELLANEOUS	-	-	-	-	-	-	-
BANK & ADMINISTRATION FEE	63,419	77,751	65,550	92,999	96,050	46.5%	3.3%
BANK FEE - 2010 BOND	-	-	828	828	852	2.9%	2.9%
INTEREST EXPENSE	224	94	138	62	142	2.9%	129.3%
BLM INTEREST EXP - HCC LOAN	45,573	101,072	11,000	95,614	95,048	764.1%	-0.6%
2010 BOND INTEREST EXPENSE	127,381	106,773	82,720	82,720	55,520	-32.9%	-32.9%
2015 BOND INTEREST EXPENSE	1,140,626	1,116,951	1,124,518	1,124,518	1,091,110	-3.0%	-3.0%
LEASED EQUIPMENT INTEREST	-	-	-	-	-	-	-
BLM INT EXP LINE OF CREDIT	2,221	-	-	-	-	-	-
BLM INT EXP COMMERCIAL LOAN	4,815	-	-	-	-	-	-
BLM INT EXP CONSTRUCTION LOAN	43,282	-	-	-	-	-	-
BLM LOAN FEES	16,285	-	-	-	-	-	-
RUWAP LOC INTEREST EXPENSE	-	50,524	20,000	118,471	100,000	400.0%	-15.6%
METER READER GEN MAINT/EQUIP	4,755	1,286	405	801	1,140	181.5%	42.3%
METERS (METER READER ONLY)	29,547	105,511	54,000	68,175	105,450	95.3%	54.7%
IOP GENERAL EXPENSES	2,062	1,963	2,550	1,644	1,900	-25.5%	15.6%
IOP EXPENSE	7,040	7,040	7,040	7,040	7,040	0.0%	0.0%
IOP PERMITS	460	-	850	-	-	-	-
IOP MAINTENANCE	5,466	1,738	650	1,647	650	0.0%	-60.5%
BLM GENERAL EXPENSES	26,981	27,500	27,900	28,689	29,300	5.0%	2.1%
BLM ASSOCIATION FEES	7,040	7,040	7,040	7,040	7,040	0.0%	0.0%
BLM MAINTENANCE	9,671	14,891	4,660	2,461	2,750	-41.0%	11.8%
FRANCHISE FEE	485,813	629,940	696,557	523,414	544,351	-21.9%	4.0%
FORA ADMIN./LIAISON FEES	25,000	25,000	25,000	25,000	25,000	0.0%	0.0%
MEMBERSHIP ON FORA BOARD	37,000	103,327	86,928	88,667	92,213	6.1%	4.0%
BAD DEBT EXPENSE	-	-	17,250	17,250	17,750	2.9%	2.9%
RW-0156 RECYCLED WATER EXPENSE	-	1,033	4,000	59	1,000	-75.0%	1587.5%
<b>TOTAL DEPARTMENT EXPENSE</b>	<b>2,835,284</b>	<b>3,392,548</b>	<b>2,973,519</b>	<b>3,592,305</b>	<b>3,690,769</b>	<b>24.1%</b>	<b>2.7%</b>
<b>TOTAL EXPENSE</b>	<b>4,332,809</b>	<b>4,956,240</b>	<b>4,583,361</b>	<b>5,118,277</b>	<b>5,468,897</b>	<b>19.3%</b>	<b>6.9%</b>

MARINA COAST WATER DISTRICT  
OPER & MAINT BUDGET FOR FY 2019-2020

ACCOUNT NAME	2016-2017 ACTUAL	2017-2018 ACTUAL	2018-2019 ADOPTED	ORD WATER		BUD vs BUD % CHANGE	BUD vs EST % CHANGE
				2018-2019 ESTIMATED	2019-2020 PROPOSED		
WAGES - OPM	437,551	530,077	511,631	552,603	712,021	39.2%	28.8%
WAGES ALLOCATED TO CAPITAL	-	(97)	-	-	-	-	-
OVERTIME	6,897	3,934	18,372	5,569	25,964	41.3%	366.2%
STANDBY WAGES	10,899	10,920	16,456	13,283	22,984	39.7%	73.0%
FICA - SS EXPENSE	27,100	30,749	33,459	33,560	46,469	38.9%	38.5%
FICA - MEDI EXPENSE	6,366	7,199	7,924	7,935	11,034	39.2%	39.0%
MEDICAL INSURANCE	110,982	125,847	123,252	133,322	175,034	42.0%	31.3%
DENTAL INSURANCE	5,429	5,805	5,214	5,878	7,546	44.7%	28.4%
VISION INSURANCE	1,028	1,093	1,066	1,159	1,462	37.2%	26.2%
WORKERS COMP. INSURANCE	13,488	15,755	21,922	23,007	30,868	40.8%	34.2%
LIFE INSURANCE EXPENSE	2,555	2,454	1,960	2,210	2,727	39.1%	23.4%
UNIFORM BENEFIT	4,155	2,059	4,219	1,955	5,773	36.8%	195.3%
BOOT BENEFIT	1,203	1,266	1,055	1,357	1,443	36.8%	6.4%
SUI EXPENSE	881	896	1,192	23	1,636	37.2%	6907.0%
ETT EXPENSE	30	37	36	1	50	37.8%	100.0%
DISABILITY PLAN	2,708	2,317	1,408	1,614	1,959	39.1%	21.4%
CALPERS RETIREMENT (ER) - Classic Plan	45,283	52,601	64,826	68,242	95,218	46.9%	39.5%
CALPERS RETIREMENT (EE) - Classic Plan	30,747	35,081	36,484	38,627	46,469	27.4%	20.3%
OPEB EXPENSE	21,489	-	23,283	22,800	-	-	-
<b>TOTAL SALARY &amp; BENEFIT</b>	<b>728,790</b>	<b>828,282</b>	<b>875,437</b>	<b>913,923</b>	<b>1,195,054</b>	<b>36.5%</b>	<b>30.8%</b>
BOOKS & REF. MATERIALS	565	827	810	-	855	5.6%	-
OFFICE SUPPLY	-	-	-	-	-	-	-
COMPUTERS/DATA PROCESSING	-	-	-	-	-	-	-
CONSULTING SERVICES	-	-	-	40,000	5,000	-	-87.5%
MEMBERSHIPS & DUES	2,161	1,931	2,108	2,011	2,200	4.4%	9.4%
SAFETY EXPENSE	2,358	2,965	2,700	2,511	3,705	37.2%	47.6%
SUPPLIES	2,235	3,483	3,024	2,840	3,192	5.6%	12.4%
GENERAL O&M MAINT & EQUIP	68,506	30,937	155,000	87,222	159,650	3.0%	83.0%
CLARK PROJ - METERS AND PARTS	86,885	228,906	150,000	36,290	-	-	-
TANK MAINTENANCE - 5 YEAR	-	-	-	-	-	-	-
O&M POWER/GAS	-	-	-	-	-	-	-
REGULATORY FEES	-	-	-	-	9,650	-	-
LUBRICANTS	4,449	6,866	5,130	6,172	7,980	55.6%	29.3%
GENERAL O&M CHEMICALS	-	-	8,000	7,330	8,000	0.0%	9.1%
PHONE	10,192	6,059	3,240	222	855	-73.6%	285.1%
MAINTENANCE MANAGEMENT SYSTEM	7,618	302	5,400	4,880	5,700	5.6%	16.8%
ANNUAL MAINTENANCE PROGRAM	20,064	1,395	18,000	12,496	18,000	0.0%	44.0%
REAL PROPERTY MAINT.	15,958	2,328	10,800	9,020	13,110	21.4%	45.3%
FLEET MAINT. & REPAIR	23,087	22,977	29,700	32,232	38,760	30.5%	20.3%
TELEMETRY SYSTEM	10,417	4,508	18,900	19,537	31,350	65.9%	60.5%
METERS	6,718	10,636	4,000	4,000	4,000	0.0%	0.0%
INTERTIE #2 MAINT & EQUIP	-	-	-	-	-	-	-
INTERTIE #2 POWER	-	-	-	-	-	-	-
WELL #10 MAINT & EQUIP	-	-	-	-	-	-	-
WELL #10 POWER	-	-	-	-	-	-	-
WELL #11 MAINT & EQUIP	-	-	-	-	-	-	-
WELL #11 POWER	-	-	-	-	-	-	-
WELL #12 MAINT & EQUIP	-	-	-	-	-	-	-
WELL #12 POWER	-	-	-	-	-	-	-
WELL #2 MAINT & EQUIP	-	-	-	-	-	-	-
DESAL POWER	-	-	-	-	-	-	-
MARINA BOOSTER MAINT & EQUIP	-	-	-	-	-	-	-
MARINA BOOSTER POWER	-	-	-	-	-	-	-
L/S 2 MAINT & EQUIP	-	-	-	-	-	-	-
L/S 2 POWER	-	-	-	-	-	-	-
L/S 3 MAINT & EQUIP	-	-	-	-	-	-	-
L/S 3 POWER	-	-	-	-	-	-	-
L/S 5 MAINT & EQUIP	-	-	-	-	-	-	-
L/S 5 POWER	-	-	-	-	-	-	-
L/S 6 MAINT & EQUIP	-	-	-	-	-	-	-

MARINA COAST WATER DISTRICT  
 OPER & MAINT BUDGET FOR FY 2019-2020

ACCOUNT NAME	ORD WATER						
	2016-2017 ACTUAL	2017-2018 ACTUAL	2018-2019 ADOPTED	2018-2019 ESTIMATED	2019-2020 PROPOSED	BUD vs BUD % CHANGE	BUD vs EST % CHANGE
L/S 6 POWER	-	-	-	-	-	-	-
WELL #29 MAINT & EQUIP	-	-	15,000	4,604	15,000	0.0%	100.0%
WELL #29 POWER	13,163	15,881	42,500	24,744	35,000	-17.6%	41.5%
WELL #30 MAINT & EQUIP	2,762	415	15,000	3,072	15,000	0.0%	388.2%
WELL #30 POWER	18,883	35,604	42,000	38,272	41,000	-2.4%	7.1%
WELL #31 MAINT & EQUIP	1,507	302	15,000	3,233	15,000	0.0%	363.9%
WELL #31 POWER	26,630	40,197	40,000	52,956	54,000	35.0%	2.0%
B/C BOOSTER MAINT & EQUIP	-	-	500	-	1,000	100.0%	100.0%
B/C BOOSTER POWER	375	381	450	400	450	0.0%	12.4%
D BOOSTER MAINT & EQUIP	13,051	402	5,000	2,106	5,000	0.0%	137.4%
D BOOSTER POWER	13,086	14,307	16,600	15,478	16,000	-3.6%	3.4%
E BOOSTER MAINT & EQUIP	1,600	402	1,000	1,106	2,000	100.0%	80.8%
E BOOSTER POWER	6,151	7,980	8,400	8,660	9,000	7.1%	3.9%
F BOOSTER MAINT & EQUIP	18,181	654	1,000	6,652	2,000	100.0%	-69.9%
F BOOSTER POWER	5,206	5,486	6,700	4,172	4,300	-35.8%	3.1%
BOOSTER/SANDTANK MAINT & EQUIP	88	6,300	15,000	6,075	15,000	0.0%	100.0%
BOOSTER/SANDTANK POWER	150,029	176,275	191,500	193,346	199,200	4.0%	3.0%
WATKINS GATE WELL MAINT & EQUIP	2,000	79,402	7,000	22,354	10,000	42.9%	-55.3%
WATKINS GATE WELL POWER	83,257	54,821	85,000	59,347	85,000	0.0%	43.2%
WELL #34 MAINT & EQUIP	-	-	7,000	2,378	10,000	42.9%	100.0%
WELL #34 POWER	64,160	82,678	88,500	90,764	94,000	6.2%	3.6%
L/S RESERVATION MAINT & EQUIP	-	-	-	-	-	-	-
L/S RESERVATION POWER	-	-	-	-	-	-	-
L/S 528 A/FIELD MAINT & EQUIP	-	-	-	-	-	-	-
L/S 528 A/FIELD POWER	-	-	-	-	-	-	-
L/S 530 A/FIELD MAINT & EQUIP	-	-	-	-	-	-	-
L/S 530 A/FIELD POWER	-	-	-	-	-	-	-
L/S 4906 POWER	-	-	-	-	-	-	-
L/S 5398 W/MEYER MAINT & EQUIP	-	-	-	-	-	-	-
L/S 5398 W/MEYER POWER	-	-	-	-	-	-	-
L/S 5447 LANDRUM MAINT & EQUIP	-	-	-	-	-	-	-
L/S 5447 LANDRUM POWER	-	-	-	-	-	-	-
L/S 5713 S/OVER MAINT & EQUIP	-	-	-	-	-	-	-
L/S 5713 S/OVER POWER	-	-	-	-	-	-	-
L/S 5790 HODGES MAINT & EQUIP	-	-	-	-	-	-	-
L/S 5790 HODGES POWER	-	-	-	-	-	-	-
L/S 5871 IMJIN MAINT & EQUIP	-	-	-	-	-	-	-
L/S 5871 IMJIN POWER	-	-	-	-	-	-	-
L/S 5990 ORD/V MAINT & EQUIP	-	-	-	-	-	-	-
L/S 5990 ORD/V POWER	-	-	-	-	-	-	-
L/S 6143 CLARK MAINT & EQUIP	-	-	-	-	-	-	-
L/S 6143 CLARK POWER	-	-	-	-	-	-	-
L/S 6225 S/PABLO MAINT & EQUIP	-	-	-	-	-	-	-
L/S 6225 S/PABLO POWER	-	-	-	-	-	-	-
L/S 6634 HATTEN MAINT & EQUIP	-	-	-	-	-	-	-
L/S 6634 HATTEN POWER	-	-	-	-	-	-	-
L/S 7698 GIGLING MAINT & EQUIP	-	-	-	-	-	-	-
L/S 7698 GIGLING POWER	-	-	-	-	-	-	-
L/S 8775 BOOKER MAINT & EQUIP	-	-	-	-	-	-	-
L/S 8775 BOOKER POWER	-	-	-	-	-	-	-
L/S 514 CARMEL MAINT & EQUIP	-	-	-	-	-	-	-
L/S 514 CARMEL POWER	-	-	-	-	-	-	-
EG LIFT STATION MAINT & EQUIP	-	-	-	-	-	-	-
EG LIFT STATION POWER	-	-	-	-	-	-	-
PROMONTORY LS MAINT & EQUIP	-	-	-	-	-	-	-
PROMONTORY LS POWER	-	-	-	-	-	-	-
<b>TOTAL DEPARTMENT EXPENSE</b>	<b>681,340</b>	<b>845,606</b>	<b>1,019,962</b>	<b>806,481</b>	<b>939,957</b>	<b>-7.8%</b>	<b>16.6%</b>
<b>TOTAL EXPENSE</b>	<b>1,410,130</b>	<b>1,673,888</b>	<b>1,895,399</b>	<b>1,720,405</b>	<b>2,135,011</b>	<b>12.6%</b>	<b>24.1%</b>

MARINA COAST WATER DISTRICT  
 OPER & MAINT BUDGET FOR FY 2019-2020

ACCOUNT NAME	ORD SEWER						
	2016-2017 ACTUAL	2017-2018 ACTUAL	2018-2019 ADOPTED	2018-2019 ESTIMATED	2019-2020 PROPOSED	BUD vs BUD % CHANGE	BUD vs EST % CHANGE
WAGES - OPM	297,357	222,668	347,701	327,733	299,096	-14.0%	-8.7%
WAGES ALLOCATED TO CAPITAL	-	(55)	-	-	-	-	-
OVERTIME	1,618	1,201	12,485	1,620	10,907	-12.6%	573.3%
STANDBY WAGES	10,899	10,920	11,183	10,542	9,655	-13.7%	-8.4%
FICA - SS EXPENSE	18,373	14,018	22,739	20,133	19,520	-14.2%	-3.0%
FICA - MEDI EXPENSE	4,305	3,281	5,385	4,773	4,635	-13.9%	-2.9%
MEDICAL INSURANCE	70,672	56,653	83,761	73,176	73,526	-12.2%	0.5%
DENTAL INSURANCE	3,522	2,567	3,543	3,229	3,170	-10.5%	-1.8%
VISION INSURANCE	704	508	724	631	614	-15.2%	-2.6%
WORKERS COMP. INSURANCE	8,510	6,800	14,898	13,244	12,966	-13.0%	-2.1%
LIFE INSURANCE EXPENSE	615	636	1,332	1,366	1,146	-14.0%	-16.1%
UNIFORM BENEFIT	1,000	534	2,868	1,237	2,425	-15.4%	96.0%
BOOT BENEFIT	290	328	717	590	606	-15.4%	2.8%
SUI EXPENSE	729	540	810	9	687	-15.2%	7618.8%
ETT EXPENSE	25	23	25	0	21	-16.6%	100.0%
DISABILITY PLAN	652	601	957	998	823	-14.0%	-17.5%
CALPERS RETIREMENT (ER) - Classic Plan	29,410	25,272	44,055	41,824	39,998	-9.2%	-4.4%
CALPERS RETIREMENT (EE) - Classic Plan	21,375	15,705	24,794	22,779	19,520	-21.3%	-14.3%
OPEB EXPENSE	14,590	-	15,823	15,000	-	-	-
<b>TOTAL SALARY &amp; BENEFIT</b>	<b>484,646</b>	<b>362,267</b>	<b>594,940</b>	<b>539,529</b>	<b>502,002</b>	<b>-15.6%</b>	<b>-7.0%</b>
BOOKS & REF. MATERIALS	283	79	225	-	210	-6.7%	-
OFFICE SUPPLY	-	-	-	-	-	-	-
COMPUTERS/DATA PROCESSING	-	-	-	-	-	-	-
CONSULTING SERVICES	-	-	-	-	2,500	-	-
MEMBERSHIPS & DUES	3,219	3,472	3,381	2,754	3,000	-11.3%	8.9%
SAFETY EXPENSE	561	757	750	697	910	21.3%	30.5%
SUPPLIES	542	1,289	840	789	784	-6.7%	-0.6%
GENERAL O&M MAINT & EQUIP	32,538	10,489	35,000	19,889	55,000	57.1%	176.5%
CLARK PROJ - METERS AND PARTS							
TANK MAINTENANCE - 5 YEAR							
O&M POWER/GAS	-	-	-	-	-	-	-
REGULATORY FEES	-	-	-	-	15,000	-	-
LUBRICANTS	1,254	1,457	1,425	1,715	1,960	37.5%	14.3%
GENERAL O&M CHEMICALS	-	-	15,000	15,653	17,000	13.3%	8.6%
PHONE	-	-	900	62	210	-76.7%	240.5%
MAINTENANCE MANAGEMENT SYSTEM	1,703	78	1,500	1,356	1,400	-6.7%	3.3%
ANNUAL MAINTENANCE PROGRAM	9,489	362	9,500	5,438	9,500	0.0%	74.7%
REAL PROPERTY MAINT.	3,278	603	3,000	2,189	3,220	7.3%	47.1%
FLEET MAINT. & REPAIR	11,407	7,756	8,250	10,052	9,520	15.4%	-5.3%
TELEMETRY SYSTEM	16,163	1,190	5,250	5,789	7,700	46.7%	33.0%
METERS	-	-	-	-	-	-	-
INTERTIE #2 MAINT & EQUIP	-	-	-	-	-	-	-
INTERTIE #2 POWER	-	-	-	-	-	-	-
WELL #10 MAINT & EQUIP	-	-	-	-	-	-	-
WELL #10 POWER	-	-	-	-	-	-	-
WELL #11 MAINT & EQUIP	-	-	-	-	-	-	-
WELL #11 POWER	-	-	-	-	-	-	-
WELL #12 MAINT & EQUIP	-	-	-	-	-	-	-
WELL #12 POWER	-	-	-	-	-	-	-
WELL #2 MAINT & EQUIP	-	-	-	-	-	-	-
DESAL POWER	-	-	-	-	-	-	-
MARINA BOOSTER MAINT & EQUIP	-	-	-	-	-	-	-
MARINA BOOSTER POWER	-	-	-	-	-	-	-
L/S 2 MAINT & EQUIP	-	-	-	-	-	-	-
L/S 2 POWER	-	-	-	-	-	-	-
L/S 3 MAINT & EQUIP	-	-	-	-	-	-	-
L/S 3 POWER	-	-	-	-	-	-	-
L/S 5 MAINT & EQUIP	-	-	-	-	-	-	-
L/S 5 POWER	-	-	-	-	-	-	-
L/S 6 MAINT & EQUIP	-	-	-	-	-	-	-

MARINA COAST WATER DISTRICT  
 OPER & MAINT BUDGET FOR FY 2019-2020

ACCOUNT NAME	ORD SEWER						
	2016-2017 ACTUAL	2017-2018 ACTUAL	2018-2019 ADOPTED	2018-2019 ESTIMATED	2019-2020 PROPOSED	BUD vs BUD % CHANGE	BUD vs EST % CHANGE
L/S 6 POWER	-	-	-	-	-	-	-
WELL #29 MAINT & EQUIP	-	-	-	-	-	-	-
WELL #29 POWER	-	-	-	-	-	-	-
WELL #30 MAINT & EQUIP	-	-	-	-	-	-	-
WELL #30 POWER	-	-	-	-	-	-	-
WELL #31 MAINT & EQUIP	-	-	-	-	-	-	-
WELL #31 POWER	-	-	-	-	-	-	-
B/C BOOSTER MAINT & EQUIP	-	-	-	-	-	-	-
B/C BOOSTER POWER	-	-	-	-	-	-	-
D BOOSTER MAINT & EQUIP	-	-	-	-	-	-	-
D BOOSTER POWER	-	-	-	-	-	-	-
E BOOSTER MAINT & EQUIP	-	-	-	-	-	-	-
E BOOSTER POWER	-	-	-	-	-	-	-
F BOOSTER MAINT & EQUIP	-	-	-	-	-	-	-
F BOOSTER POWER	-	-	-	-	-	-	-
BOOSTER/SANDTANK MAINT & EQUIP	-	-	-	-	-	-	-
BOOSTER/SANDTANK POWER	-	-	-	-	-	-	-
WATKINS GATE WELL MAINT & EQUIP	-	-	-	-	-	-	-
WATKINS GATE WELL POWER	-	-	-	-	-	-	-
WELL #34 MAINT & EQUIP	-	-	-	-	-	-	-
WELL #34 POWER	-	-	-	-	-	-	-
L/S RESERVATION MAINT & EQUIP	2,500	402	1,000	2,261	1,500	50.0%	-33.7%
L/S RESERVATION POWER	2,169	3,064	2,900	3,708	3,820	31.7%	3.0%
L/S 528 A/FIELD MAINT & EQUIP	-	1,458	2,000	-	3,000	50.0%	-
L/S 528 A/FIELD POWER	290	273	300	290	600	100.0%	106.7%
L/S 530 A/FIELD MAINT & EQUIP	1,600	402	1,000	9,443	2,000	100.0%	-78.8%
L/S 530 A/FIELD POWER	2,509	2,727	2,700	2,638	2,760	2.2%	4.6%
L/S 4906 POWER	-	-	-	-	-	-	-
L/S 5398 W/MEYER MAINT & EQUIP	1,507	7,504	1,000	1,101	2,000	100.0%	81.7%
L/S 5398 W/MEYER POWER	1,989	1,637	2,050	1,170	1,550	-24.4%	32.5%
L/S 5447 LANDRUM MAINT & EQUIP	1,507	302	1,000	991	1,500	50.0%	51.4%
L/S 5447 LANDRUM POWER	2,193	2,391	2,400	2,170	2,300	-4.2%	6.0%
L/S 5713 S/OVER MAINT & EQUIP	1,507	477	1,000	991	1,500	50.0%	51.4%
L/S 5713 S/OVER POWER	3,968	3,779	3,900	3,642	3,900	0.0%	7.1%
L/S 5790 HODGES MAINT & EQUIP	1,600	720	1,000	1,106	1,500	50.0%	35.6%
L/S 5790 HODGES POWER	2,064	2,104	2,150	1,994	2,150	0.0%	7.8%
L/S 5871 IMJIN MAINT & EQUIP	8,470	561	2,000	1,684	3,500	75.0%	107.8%
L/S 5871 IMJIN POWER	7,624	8,160	8,300	8,066	8,350	0.6%	3.5%
L/S 5990 ORD/V MAINT & EQUIP	8,826	859	28,000	28,375	5,000	-82.1%	-82.4%
L/S 5990 ORD/V POWER	11,141	10,398	11,000	9,884	11,000	0.0%	11.3%
L/S 6143 CLARK MAINT & EQUIP	2,003	539	1,000	1,106	1,500	50.0%	35.6%
L/S 6143 CLARK POWER	1,744	2,042	2,100	2,222	2,300	9.5%	3.5%
L/S 6225 S/PABLO MAINT & EQUIP	-	669	-	-	-	-	-
L/S 6225 S/PABLO POWER	-	-	-	-	-	-	-
L/S 6634 HATTEN MAINT & EQUIP	-	-	1,000	-	1,000	0.0%	100.0%
L/S 6634 HATTEN POWER	153	154	165	160	170	3.0%	6.1%
L/S 7698 GIGLING MAINT & EQUIP	7,369	435	28,000	13,184	5,000	-82.1%	-62.1%
L/S 7698 GIGLING POWER	11,332	11,329	11,900	11,046	11,900	0.0%	7.7%
L/S 8775 BOOKER MAINT & EQUIP	1,600	402	1,000	1,184	1,500	50.0%	26.6%
L/S 8775 BOOKER POWER	858	903	950	908	950	0.0%	4.7%
L/S 514 CARMEL MAINT & EQUIP	5,190	-	1,000	730	1,500	50.0%	100.0%
L/S 514 CARMEL POWER	1,433	1,464	1,500	1,454	1,505	0.3%	3.5%
EG LIFT STATION MAINT & EQUIP	15,801	14,970	1,000	902	2,000	100.0%	121.7%
EG LIFT STATION POWER	2,420	3,685	3,500	4,240	4,370	24.9%	3.1%
PROMONTORY LS MAINT & EQUIP	1,565	402	1,000	1,106	1,500	50.0%	100.0%
PROMONTORY LS POWER	2,505	2,565	2,550	2,898	3,000	17.6%	100.0%
<b>TOTAL DEPARTMENT EXPENSE</b>	<b>195,872</b>	<b>114,308</b>	<b>215,386</b>	<b>187,037</b>	<b>224,039</b>	<b>4.0%</b>	<b>19.8%</b>
<b>TOTAL EXPENSE</b>	<b>680,517</b>	<b>476,574</b>	<b>810,326</b>	<b>726,566</b>	<b>726,041</b>	<b>-10.4%</b>	<b>-0.1%</b>



MARINA COAST WATER DISTRICT  
 OPER & MAINT BUDGET FOR FY 2019-2020

ACCOUNT NAME	2016-2017 ACTUAL	2017-2018 ACTUAL	2018-2019 ADOPTED	TOTAL		BUD vs BUD % CHANGE	BUD vs EST % CHANGE
				2018-2019 ESTIMATED	2019-2020 PROPOSED		
WAGES - OPM	734,908	752,745	859,332	880,337	1,011,118	17.7%	14.9%
WAGES ALLOCATED TO CAPITAL	-	(152)	-	-	-	-	-
OVERTIME	8,514	5,135	30,857	7,189	36,870	19.5%	412.9%
STANDBY WAGES	21,798	21,840	27,639	23,825	32,639	18.1%	37.0%
FICA - SS EXPENSE	45,473	44,767	56,198	53,693	65,989	17.4%	22.9%
FICA - MEDI EXPENSE	10,671	10,480	13,309	12,708	15,669	17.7%	23.3%
MEDICAL INSURANCE	181,655	182,499	207,013	206,498	248,559	20.1%	20.4%
DENTAL INSURANCE	8,951	8,372	8,757	9,107	10,715	22.4%	17.7%
VISION INSURANCE	1,732	1,600	1,790	1,790	2,076	16.0%	16.0%
WORKERS COMP. INSURANCE	21,998	22,555	36,820	36,250	43,834	19.0%	20.9%
LIFE INSURANCE EXPENSE	3,170	3,090	3,292	3,576	3,873	17.6%	8.3%
UNIFORM BENEFIT	5,156	2,593	7,087	3,192	8,198	15.7%	156.8%
BOOT BENEFIT	1,493	1,594	1,772	1,946	2,050	15.7%	5.3%
SUI EXPENSE	1,610	1,435	2,002	32	2,323	16.0%	7103.5%
ETT EXPENSE	55	60	61	1	70	15.5%	100.0%
DISABILITY PLAN	3,359	2,918	2,365	2,612	2,782	17.6%	6.5%
CALPERS RETIREMENT (ER) - Classic Plan	74,693	77,873	108,881	110,066	135,215	24.2%	22.8%
CALPERS RETIREMENT (EE) - Classic Plan	52,122	50,785	61,278	61,406	65,990	7.7%	7.5%
OPEB EXPENSE	36,079	-	39,106	37,800	-	-	-
<b>TOTAL SALARY &amp; BENEFIT</b>	<b>1,213,435</b>	<b>1,190,548</b>	<b>1,470,377</b>	<b>1,453,452</b>	<b>1,697,057</b>	<b>15.4%</b>	<b>16.8%</b>
BOOKS & REF. MATERIALS	848	906	1,035	-	1,065	2.9%	-
OFFICE SUPPLY	-	-	-	-	-	-	-
COMPUTERS/DATA PROCESSING	-	-	-	-	-	-	-
CONSULTING SERVICES	-	-	-	40,000	7,500	-	-81.3%
MEMBERSHIPS & DUES	5,380	5,403	5,489	4,765	5,200	-5.3%	9.1%
SAFETY EXPENSE	2,919	3,723	3,450	3,208	4,615	33.8%	43.9%
SUPPLIES	2,777	4,772	3,864	3,628	3,976	2.9%	9.6%
GENERAL O&M MAINT & EQUIP	101,044	41,425	190,000	107,111	214,650	13.0%	100.4%
CLARK PROJ - METERS AND PARTS	86,885	228,906	150,000	36,290	-	-	-
TANK MAINTENANCE - 5 YEAR	-	-	-	-	-	-	-
O&M POWER/GAS	-	-	-	-	-	-	-
REGULATORY FEES	-	-	-	-	24,650	-	-
LUBRICANTS	5,703	8,323	6,555	7,887	9,940	51.6%	26.0%
GENERAL O&M CHEMICALS	-	-	23,000	22,983	25,000	8.7%	8.8%
PHONE	10,192	6,059	4,140	284	1,065	-74.3%	275.4%
MAINTENANCE MANAGEMENT SYSTEM	9,321	381	6,900	6,236	7,100	2.9%	13.9%
ANNUAL MAINTENANCE PROGRAM	29,553	1,757	27,500	17,934	27,500	0.0%	53.3%
REAL PROPERTY MAINT.	19,236	2,931	13,800	11,209	16,330	18.3%	45.7%
FLEET MAINT. & REPAIR	34,494	30,733	37,950	42,285	48,280	27.2%	14.2%
TELEMETRY SYSTEM	26,580	5,698	24,150	25,326	39,050	61.7%	54.2%
METERS	6,718	10,636	4,000	4,000	4,000	0.0%	0.0%
INTERTIE #2 MAINT & EQUIP	-	-	-	-	-	-	-
INTERTIE #2 POWER	-	-	-	-	-	-	-
WELL #10 MAINT & EQUIP	-	-	-	-	-	-	100.0%
WELL #10 POWER	-	-	-	-	-	-	-
WELL #11 MAINT & EQUIP	-	-	-	-	-	-	-
WELL #11 POWER	-	-	-	-	-	-	-
WELL #12 MAINT & EQUIP	-	-	-	-	-	-	-
WELL #12 POWER	-	-	-	-	-	-	-
WELL #2 MAINT & EQUIP	-	-	-	-	-	-	-
DESAL POWER	-	-	-	-	-	-	-
MARINA BOOSTER MAINT & EQUIP	-	-	-	-	-	-	100.0%
MARINA BOOSTER POWER	-	-	-	-	-	-	-
L/S 2 MAINT & EQUIP	-	-	-	-	-	-	100.0%
L/S 2 POWER	-	-	-	-	-	-	-
L/S 3 MAINT & EQUIP	-	-	-	-	-	-	-
L/S 3 POWER	-	-	-	-	-	-	-
L/S 5 MAINT & EQUIP	-	-	-	-	-	-	-
L/S 5 POWER	-	-	-	-	-	-	-
L/S 6 MAINT & EQUIP	-	-	-	-	-	-	-

**MARINA COAST WATER DISTRICT  
OPER & MAINT BUDGET FOR FY 2019-2020**

ACCOUNT NAME	TOTAL				2019-2020 PROPOSED	BUD vs BUD % CHANGE	BUD vs EST % CHANGE
	2016-2017 ACTUAL	2017-2018 ACTUAL	2018-2019 ADOPTED	2018-2019 ESTIMATED			
L/S 6 POWER	-	-	-	-	-	-	-
WELL #29 MAINT & EQUIP	-	-	15,000	4,604	15,000	0.0%	100.0%
WELL #29 POWER	13,163	15,881	42,500	24,744	35,000	-17.6%	41.5%
WELL #30 MAINT & EQUIP	2,762	415	15,000	3,072	15,000	0.0%	388.2%
WELL #30 POWER	18,883	35,604	42,000	38,272	41,000	-2.4%	7.1%
WELL #31 MAINT & EQUIP	1,507	302	15,000	3,233	15,000	0.0%	363.9%
WELL #31 POWER	26,630	40,197	40,000	52,956	54,000	35.0%	2.0%
B/C BOOSTER MAINT & EQUIP	-	-	500	-	1,000	100.0%	100.0%
B/C BOOSTER POWER	375	381	450	400	450	0.0%	12.4%
D BOOSTER MAINT & EQUIP	13,051	402	5,000	2,106	5,000	0.0%	137.4%
D BOOSTER POWER	13,086	14,307	16,600	15,478	16,000	-3.6%	3.4%
E BOOSTER MAINT & EQUIP	1,600	402	1,000	1,106	2,000	100.0%	80.8%
E BOOSTER POWER	6,151	7,980	8,400	8,660	9,000	7.1%	3.9%
F BOOSTER MAINT & EQUIP	18,181	654	1,000	6,652	2,000	100.0%	-69.9%
F BOOSTER POWER	5,206	5,486	6,700	4,172	4,300	-35.8%	3.1%
BOOSTER/SANDTANK MAINT & EQUIP	88	6,300	15,000	6,075	15,000	0.0%	100.0%
BOOSTER/SANDTANK POWER	150,029	176,275	191,500	193,346	199,200	4.0%	3.0%
WATKINS GATE WELL MAINT & EQUIP	2,000	79,402	7,000	22,354	10,000	42.9%	-55.3%
WATKINS GATE WELL POWER	83,257	54,821	85,000	59,347	85,000	0.0%	43.2%
WELL #34 MAINT & EQUIP	-	-	7,000	2,378	10,000	42.9%	100.0%
WELL #34 POWER	64,160	82,678	88,500	90,764	94,000	6.2%	3.6%
L/S RESERVATION MAINT & EQUIP	2,500	402	1,000	2,261	1,500	50.0%	-33.7%
L/S RESERVATION POWER	2,169	3,064	2,900	3,708	3,820	31.7%	3.0%
L/S 528 A/FIELD MAINT & EQUIP	-	1,458	2,000	-	3,000	50.0%	-
L/S 528 A/FIELD POWER	290	273	300	290	600	100.0%	106.7%
L/S 530 A/FIELD MAINT & EQUIP	1,600	402	1,000	9,443	2,000	100.0%	-78.8%
L/S 530 A/FIELD POWER	2,509	2,727	2,700	2,638	2,760	2.2%	4.6%
L/S 4906 POWER	-	-	-	-	-	-	-
L/S 5398 W/MEYER MAINT & EQUIP	1,507	7,504	1,000	1,101	2,000	100.0%	81.7%
L/S 5398 W/MEYER POWER	1,989	1,637	2,050	1,170	1,550	-24.4%	32.5%
L/S 5447 LANDRUM MAINT & EQUIP	1,507	302	1,000	991	1,500	50.0%	51.4%
L/S 5447 LANDRUM POWER	2,193	2,391	2,400	2,170	2,300	-4.2%	6.0%
L/S 5713 S/OVER MAINT & EQUIP	1,507	477	1,000	991	1,500	50.0%	51.4%
L/S 5713 S/OVER POWER	3,968	3,779	3,900	3,642	3,900	0.0%	7.1%
L/S 5790 HODGES MAINT & EQUIP	1,600	720	1,000	1,106	1,500	50.0%	35.6%
L/S 5790 HODGES POWER	2,064	2,104	2,150	1,994	2,150	0.0%	7.8%
L/S 5871 IMJIN MAINT & EQUIP	8,470	561	2,000	1,684	3,500	75.0%	107.8%
L/S 5871 IMJIN POWER	7,624	8,160	8,300	8,066	8,350	0.6%	3.5%
L/S 5990 ORD/V MAINT & EQUIP	8,826	859	28,000	28,375	5,000	-82.1%	-82.4%
L/S 5990 ORD/V POWER	11,141	10,398	11,000	9,884	11,000	0.0%	11.3%
L/S 6143 CLARK MAINT & EQUIP	2,003	539	1,000	1,106	1,500	50.0%	35.6%
L/S 6143 CLARK POWER	1,744	2,042	2,100	2,222	2,300	9.5%	3.5%
L/S 6225 S/PABLO MAINT & EQUIP	-	669	-	-	-	-	-
L/S 6225 S/PABLO POWER	-	-	-	-	-	-	-
L/S 6634 HATTEN MAINT & EQUIP	-	-	1,000	-	1,000	0.0%	100.0%
L/S 6634 HATTEN POWER	153	154	165	160	170	3.0%	6.1%
L/S 7698 GIGLING MAINT & EQUIP	7,369	435	28,000	13,184	5,000	-82.1%	-62.1%
L/S 7698 GIGLING POWER	11,332	11,329	11,900	11,046	11,900	0.0%	7.7%
L/S 8775 BOOKER MAINT & EQUIP	1,600	402	1,000	1,184	1,500	50.0%	26.6%
L/S 8775 BOOKER POWER	858	903	950	908	950	0.0%	4.7%
L/S 514 CARMEL MAINT & EQUIP	5,190	-	1,000	730	1,500	50.0%	100.0%
L/S 514 CARMEL POWER	1,433	1,464	1,500	1,454	1,505	0.3%	3.5%
EG LIFT STATION MAINT & EQUIP	15,801	14,970	1,000	902	2,000	100.0%	121.7%
EG LIFT STATION POWER	2,420	3,685	3,500	4,240	4,370	24.9%	3.1%
PROMONTORY LS MAINT & EQUIP	1,565	402	1,000	1,106	1,500	50.0%	100.0%
PROMONTORY LS POWER	2,505	2,565	2,550	2,898	3,000	17.6%	100.0%
<b>TOTAL DEPARTMENT EXPENSE</b>	<b>877,212</b>	<b>959,914</b>	<b>1,235,348</b>	<b>993,518</b>	<b>1,163,996</b>	<b>-5.8%</b>	<b>17.2%</b>
<b>TOTAL EXPENSE</b>	<b>2,090,647</b>	<b>2,150,462</b>	<b>2,705,725</b>	<b>2,446,970</b>	<b>2,861,053</b>	<b>5.7%</b>	<b>16.9%</b>

**MARINA COAST WATER DISTRICT  
LAB BUDGET FOR FY 2019-2020**

ACCOUNT NAME	ORD WATER						
	2016-2017 ACTUAL	2017-2018 ACTUAL	2018-2019 ADOPTED	2018-2019 ESTIMATED	2019-2020 PROPOSED	BUD vs BUD % CHANGE	BUD vs EST % CHANGE
WAGES - LAB	86,818	89,531	96,769	94,601	111,550	15.3%	17.9%
WAGES ALLOCATED TO CAPITAL	-	-	-	-	-	-	-
OVERTIME	956	455	576	-	665	15.5%	100.0%
FICA - SS EXPENSE	5,334	5,521	6,036	5,848	6,957	15.3%	19.0%
FICA - MEDI EXPENSE	1,248	1,291	1,412	1,368	1,627	15.2%	19.0%
MEDICAL INSURANCE	8,660	8,123	10,058	10,078	10,979	9.2%	8.9%
DENTAL INS. EXPENSE	372	311	369	404	391	6.0%	-3.1%
VISION INS. EXPENSE	155	150	169	160	179	5.9%	12.2%
WORKERS COMP. EXPENSE	2,840	2,895	4,302	4,181	4,990	16.0%	19.3%
LIFE INSURANCE EXPENSE	290	309	338	346	393	16.3%	13.7%
UNIFORM BENEFIT	271	196	442	182	468	5.9%	157.5%
BOOT BENEFIT	-	-	136	-	144	5.9%	100.0%
SUI EXPENSE	152	244	330	59	349	5.8%	495%
ETT EXPENSE	5	10	10	2	11	10.0%	400.0%
DISABILITY PLAN	301	292	243	253	282	16.0%	11.3%
CALPERS RETIREMENT (ER) - Classic Plan	8,298	9,123	11,749	11,789	15,741	34.0%	33.5%
CALPERS RETIREMENT (EE) - Classic Plan	5,980	5,941	6,612	6,784	7,682	16.2%	13.2%
CALPERS-62 RETIREMENT (ER)	-	-	-	-	-	-	-
CALPERS-62 RETIREMENT (EE)	-	-	-	-	-	-	-
OPEB EXPENSE	4,260	-	4,927	4,410	-	-	100.0%
<b>TOTAL SALARY &amp; BENEFIT</b>	<b>125,940</b>	<b>124,393</b>	<b>144,478</b>	<b>140,464</b>	<b>162,408</b>	<b>12.4%</b>	<b>15.6%</b>
CHEMICALS	3,700	6,320	7,050	7,257	7,419	5.2%	2.2%
GLASSWARE	1,342	2,452	2,719	2,799	2,861	5.2%	2.2%
BOOKS & REF. MATERIAL	-	296	386	398	406	5.2%	2.0%
CONTRACT TESTING	21,513	15,995	35,447	37,294	34,560	-2.5%	-7.3%
GENERAL SUPPLY	3,108	3,091	6,703	6,901	7,052	5.2%	2.2%
QUALITY CONTROL PROGRAM	2,751	4,453	11,123	11,451	11,703	5.2%	2.2%
POSTAGE	193	73	910	970	975	7.1%	0.5%
PRINTING	3,128	3,425	6,425	6,614	6,756	5.2%	2.1%
OFFICE SUPPLY	-	-	427	440	449	5.2%	2.0%
MEMBERSHIPS & DUES	1,465	1,506	1,658	1,707	1,738	4.8%	1.8%
LAB PERMITS	3,344	4,179	9,893	10,184	10,407	5.2%	2.2%
CERTIFICATION	-	-	359	370	377	5.0%	1.9%
DESAL - MONITORING	-	-	6,000	6,000	6,000	0.0%	0.0%
LAB MAINT. & REPAIR	9,256	5,858	11,661	12,004	14,028	20.3%	16.9%
<b>TOTAL DEPARTMENT EXPENSE</b>	<b>49,799</b>	<b>47,647</b>	<b>100,761</b>	<b>104,388</b>	<b>104,731</b>	<b>3.9%</b>	<b>0.3%</b>
<b>TOTAL EXPENSE</b>	<b>175,738</b>	<b>172,041</b>	<b>245,239</b>	<b>244,852</b>	<b>267,139</b>	<b>8.9%</b>	<b>9.1%</b>

**MARINA COAST WATER DISTRICT  
CON BUDGET FOR FY 2019-2020**

ACCOUNT NAME	ORD WATER						BUD vs BUD % CHANGE	BUD vs EST % CHANGE
	2016-2017 ACTUAL	2017-2018 ACTUAL	2018-2019 ADOPTED	2018-2019 ESTIMATED	2019-2020 PROPOSED			
WAGES - CON	102,219	89,298	82,326	67,733	94,884	15.3%	40.1%	
OVERTIME	2,262	2,307	13,061	3,991	4,378	-66.5%	9.7%	
FICA - SS EXPENSE	6,092	5,487	5,914	4,463	6,155	4.1%	37.9%	
FICA - MEDI EXPENSE	1,425	1,283	1,382	1,044	1,439	4.1%	37.8%	
MEDICAL INSURANCE	17,613	12,545	9,824	8,141	10,491	6.8%	28.9%	
DENTAL INS. EXPENSE	717	669	342	283	351	2.6%	24.2%	
VISION INS. EXPENSE	273	242	159	144	163	2.5%	13.0%	
WORKERS COMP. EXPENSE	713	657	975	717	1,049	7.6%	46.4%	
LIFE INSURANCE EXPENSE	372	365	282	270	329	16.7%	21.8%	
UNIFORM BENEFIT	174	-	140	-	144	2.9%	-	
SUI EXPENSE	436	296	356	68	366	2.8%	437.4%	
ETT EXPENSE	15	12	11	3	11	0.0%	308.9%	
DISABILITY PLAN	388	355	203	198	236	16.3%	19.3%	
CALPERS RETIREMENT (ER) - Classic Plan	6,507	6,616	9,794	9,066	13,183	34.6%	45.4%	
CALPERS RETIREMENT (EE) - Classic Plan	4,049	4,202	5,512	5,027	6,434	16.7%	28.0%	
CALPERS-62 RETIREMENT (ER)	2,500	1,989	-	-	-	-	-	
CALPERS-62 RETIREMENT (EE)	-	-	-	-	-	-	-	
OPEB EXPENSE	4,982	-	6,721	6,721	7,200	7.1%	7.1%	
<b>TOTAL SALARY &amp; BENEFIT</b>	<b>150,736</b>	<b>126,324</b>	<b>137,002</b>	<b>107,869</b>	<b>146,813</b>	<b>7.2%</b>	<b>36.1%</b>	
BOOKS & REF. MATERIAL	-	-	140	140	144	2.9%	2.9%	
PRINTING	2,247	2,048	4,300	4,288	3,600	-16.3%	-16.0%	
GENERAL SUPPLY	215	2,733	350	336	720	105.7%	114.3%	
COMPUTERS/DATA PROCESSING	503	530	700	701	360	-48.6%	-48.6%	
ADVERTISEMENT	538	-	2,500	2,366	2,500	0.0%	5.7%	
CONSULTING SERVICES	-	-	1,750	1,750	3,960	126.3%	100.0%	
MEMBERSHIPS & DUES	3,874	3,741	4,200	4,200	4,716	12.3%	12.3%	
TOILET REBATE	5,469	40,620	68,250	68,250	97,250	42.5%	42.5%	
WASHING MACHINE REBATE	8,250	4,400	3,160	4,275	4,340	37.3%	1.5%	
CONSERVATION EDUCATION	2,800	8,680	14,700	14,549	18,700	27.2%	28.5%	
LANDSCAPE REBATE	949	459	1,000	500	10,000	900.0%	1900.0%	
HOT WATER RECIR REBATE	-	-	300	300	300	0.0%	0.0%	
SHOWER HEADS AND AERATORS	2,953	1,004	2,500	2,717	2,500	0.0%	-8.0%	
LANDSCAPE DEMONSTRATION	190	906	1,050	1,028	1,080	2.9%	5.1%	
<b>TOTAL DEPARTMENT EXPENSE</b>	<b>27,988</b>	<b>65,121</b>	<b>104,900</b>	<b>105,399</b>	<b>150,170</b>	<b>43.2%</b>	<b>42.5%</b>	
<b>TOTAL EXPENSE</b>	<b>178,724</b>	<b>191,445</b>	<b>241,902</b>	<b>213,268</b>	<b>296,983</b>	<b>22.8%</b>	<b>39.3%</b>	

**MARINA COAST WATER DISTRICT  
ENG BUDGET FOR FY 2019-2020**

ACCOUNT NAME	ORD WATER						
	2016-2017 ACTUAL	2017-2018 ACTUAL	2018-2019 ADOPTED	2018-2019 ESTIMATED	2019-2020 PROPOSED	BUD vs BUD % CHANGE	BUD vs EST % CHANGE
WAGES - ENG	254,609	308,883	363,235	280,218	403,091	11.0%	43.8%
WAGES-ALLOCATED TO CAPITAL	-	(21,925)	(30,000)	(29,794)	(30,000)	-100.0%	-100.0%
WAGE/BENEFITS TO OTHER CC PROJ	-	-	-	-	-	-100.0%	-100.0%
OVERTIME	-	69	309	-	339	9.7%	100.0%
FICA - SS EXPENSE	13,695	16,762	20,545	13,923	23,389	13.8%	68.0%
FICA - MEDI EXPENSE	3,508	4,206	5,271	3,942	5,850	11.0%	48.4%
MEDICAL INSURANCE	39,237	43,677	75,466	41,348	72,334	-4.2%	74.9%
DENTAL INSURANCE	2,146	2,051	3,133	1,684	3,061	-2.3%	81.8%
VISION INSURANCE	483	593	669	541	706	5.5%	30.5%
WORKERS COMP. INSURANCE	1,821	2,304	3,692	2,823	4,081	10.5%	44.6%
LIFE INSURANCE EXPENSE	976	1,104	1,362	1,221	1,502	10.3%	23.0%
BOOTS BENEFIT	199	106	540	540	570	5.6%	5.6%
SUI EXPENSE	767	544	748	748	790	5.6%	5.6%
ETT EXPENSE	26	23	23	21	25	8.7%	19.0%
DISABILITY PLAN	1,035	1,179	1,000	893	1,109	10.9%	24.1%
CALPERS RETIREMENT (ER) - Classic Plan	23,376	26,375	35,309	26,793	44,902	27.2%	67.6%
CALPERS RETIREMENT (EE) - Classic Plan	15,057	15,506	19,873	14,598	21,915	10.3%	50.1%
CALPERS-62 RETIREMENT (ER)	2,751	6,071	6,699	6,721	7,720	15.2%	14.9%
CALPERS-62 RETIREMENT (EE)	-	-	-	-	-	-	-
OPEB EXPENSE	13,312	-	19,872	17,280	-	-	-
<b>TOTAL SALARY &amp; BENEFIT</b>	<b>373,166</b>	<b>407,529</b>	<b>528,070</b>	<b>383,500</b>	<b>561,726</b>	<b>6.4%</b>	<b>46.5%</b>
BOOKS & REF MATERIALS	-	88	162	-	-	-	-
POSTAGE	12	-	108	-	-	-	-
PRINTING/ SCANNING SERVICES	521	804	270	-	-	-	-
OFFICE SUPPLY	-	-	270	-	-	-	-
GENERAL SUPPLY	-	80	-	-	-	-	-
MEMBERSHIPS & DUES	809	817	540	-	-	-	-
MAPPING SERVICES	-	-	20,000	20,000	25,000	25.0%	25.0%
ENGINEERING CONSULTANTS	212,418	298,195	94,000	141,176	140,000	48.9%	-0.8%
DEVELOPER EXPENSES (NOT MCWD)	381,989	307,805	320,000	246,986	250,000	-21.9%	1.2%
DEVELOPER EXPENSES - METERS	96,382	94,916	60,000	105,345	110,000	83.3%	4.4%
<b>TOTAL DEPARTMENT EXPENSE</b>	<b>692,131</b>	<b>702,704</b>	<b>495,350</b>	<b>513,507</b>	<b>525,000</b>	<b>6.0%</b>	<b>2.2%</b>
<b>TOTAL EXPENSE</b>	<b>1,065,298</b>	<b>1,110,233</b>	<b>1,023,420</b>	<b>897,007</b>	<b>1,086,726</b>	<b>6.2%</b>	<b>21.2%</b>

**MARINA COAST WATER DISTRICT  
ENG BUDGET FOR FY 2019-2020**

ACCOUNT NAME	ORD SEWER						
	2016-2017 ACTUAL	2017-2018 ACTUAL	2018-2019 ADOPTED	2018-2019 ESTIMATED	2019-2020 PROPOSED	BUD vs BUD % CHANGE	BUD vs EST % CHANGE
WAGES - ENG	95,361	82,940	100,899	75,969	99,005	-1.9%	30.3%
WAGES-ALLOCATED TO CAPITAL	(43,402)	(9,832)	(20,000)	(3,523)	(5,000)	-100.0%	-100.0%
WAGE/BENEFITS TO OTHER CC PROJ	-	-	-	-	-	-100.0%	-100.0%
OVERTIME	-	18	86	-	83	-3.5%	100.0%
FICA - SS EXPENSE	5,354	4,494	5,707	3,752	5,745	0.7%	53.1%
FICA - MEDI EXPENSE	1,328	1,125	1,464	1,068	1,437	-1.8%	34.6%
MEDICAL INSURANCE	16,898	12,182	20,963	11,278	17,766	-15.3%	57.5%
DENTAL INSURANCE	909	581	870	461	752	-13.6%	63.3%
VISION INSURANCE	176	156	186	146	173	-7.0%	18.4%
WORKERS COMP. INSURANCE	701	585	1,026	748	1,002	-2.3%	34.0%
LIFE INSURANCE EXPENSE	356	329	378	331	369	-2.4%	11.6%
BOOTS BENEFIT	48	28	150	150	140	-6.7%	-6.7%
SUI EXPENSE	196	141	208	208	194	-6.7%	-6.7%
ETT EXPENSE	7	6	6	6	6	0.0%	0.0%
DISABILITY PLAN	375	321	278	242	272	-2.2%	12.5%
CALPERS RETIREMENT (ER) - Classic Plan	8,352	7,340	9,808	7,479	11,029	12.4%	47.5%
CALPERS RETIREMENT (EE) - Classic Plan	6,127	4,480	5,520	4,087	5,383	-2.5%	31.7%
CALPERS-62 RETIREMENT (ER)	662	1,324	1,861	1,713	1,896	1.9%	10.7%
CALPERS-62 RETIREMENT (EE)	-	-	-	-	-	-	-
OPEB EXPENSE	4,649	-	5,520	4,800	-	-	-
<b>TOTAL SALARY &amp; BENEFIT</b>	<b>98,137</b>	<b>106,218</b>	<b>135,020</b>	<b>108,914</b>	<b>140,336</b>	<b>3.9%</b>	<b>28.9%</b>
BOOKS & REF MATERIALS	-	-	45	-	-	-	-
POSTAGE	37	-	30	-	-	-	-
PRINTING/ SCANNING SERVICES	146	209	75	-	-	-	-
OFFICE SUPPLY	-	-	75	-	-	-	-
GENERAL SUPPLY	-	21	-	-	-	-	-
MEMBERSHIPS & DUES	37	42	150	-	-	-	-
MAPPING SERVICES	-	-	10,000	10,000	15,000	50.0%	50.0%
ENGINEERING CONSULTANTS	26,464	82,188	38,000	74,328	80,000	110.5%	7.6%
DEVELOPER EXPENSES (NOT MCWD)	109,066	92,980	90,000	104,477	105,000	16.7%	0.5%
DEVELOPER EXPENSES - METERS	-	-	-	-	-	-	-
<b>TOTAL DEPARTMENT EXPENSE</b>	<b>135,750</b>	<b>175,439</b>	<b>138,375</b>	<b>188,805</b>	<b>200,000</b>	<b>44.5%</b>	<b>5.9%</b>
<b>TOTAL EXPENSE</b>	<b>233,887</b>	<b>281,657</b>	<b>273,395</b>	<b>297,719</b>	<b>340,336</b>	<b>24.5%</b>	<b>14.3%</b>

**MARINA COAST WATER DISTRICT  
ENG BUDGET FOR FY 2019-2020**

ACCOUNT NAME	RUWAP					BUD vs BUD % CHANGE	BUD vs EST % CHANGE
	2016-2017 ACTUAL	2017-2018 ACTUAL	2018-2019 ADOPTED	2018-2019 ESTIMATED	2019-2020 PROPOSED		
WAGES - ENG	-	-	-	-	-	-	-
WAGES-ALLOCATED TO CAPITAL	-	-	-	-	-	-	-
WAGE/BENEFITS TO OTHER CC PROJ	-	-	-	-	-	-	-
OVERTIME	-	-	-	-	-	-	-
FICA - SS EXPENSE	-	-	-	-	-	-	-
FICA - MEDI EXPENSE	-	-	-	-	-	-	-
MEDICAL INSURANCE	-	-	-	-	-	-	-
DENTAL INSURANCE	-	-	-	-	-	-	-
VISION INSURANCE	-	-	-	-	-	-	-
WORKERS COMP. INSURANCE	-	-	-	-	-	-	-
LIFE INSURANCE EXPENSE	-	-	-	-	-	-	-
BOOTS BENEFIT	-	-	-	-	-	-	-
SUI EXPENSE	-	-	-	-	-	-	-
ETT EXPENSE	-	-	-	-	-	-	-
DISABILITY PLAN	-	-	-	-	-	-	-
CALPERS RETIREMENT (ER) - Classic Plan	-	-	-	-	-	-	-
CALPERS RETIREMENT (EE) - Classic Plan	-	-	-	-	-	-	-
CALPERS-62 RETIREMENT (ER)	-	-	-	-	-	-	-
CALPERS-62 RETIREMENT (EE)	-	-	-	-	-	-	-
OPEB EXPENSE	-	-	-	-	-	-	-
<b>TOTAL SALARY &amp; BENEFIT</b>	-	-	-	-	-	-	-
BOOKS & REF MATERIALS	-	-	-	-	-	-	-
POSTAGE	-	-	-	-	-	-	-
PRINTING/ SCANNING SERVICES	-	-	-	-	-	-	-
OFFICE SUPPLY	-	-	-	-	-	-	-
GENERAL SUPPLY	-	-	-	-	-	-	-
MEMBERSHIPS & DUES	-	-	-	-	-	-	-
MAPPING SERVICES	-	-	-	-	-	-	-
ENGINEERING CONSULTANTS	-	-	-	-	-	-	-
DEVELOPER EXPENSES (NOT MCWD)	-	-	-	-	-	-	-
DEVELOPER EXPENSES - METERS	-	-	-	-	-	-	-
<b>TOTAL DEPARTMENT EXPENSE</b>	-	-	-	-	-	-	-
<b>TOTAL EXPENSE</b>	-	-	-	-	-	-	-

**MARINA COAST WATER DISTRICT  
ENG BUDGET FOR FY 2019-2020**

ACCOUNT NAME	TOTAL				2019-2020 PROPOSED	BUD vs BUD % CHANGE	BUD vs EST % CHANGE
	2016-2017 ACTUAL	2017-2018 ACTUAL	2018-2019 ADOPTED	2018-2019 ESTIMATED			
WAGES - ENG	349,970	391,824	464,134	356,187	502,096	8.2%	41.0%
WAGES-ALLOCATED TO CAPITAL	(43,402)	(31,756)	(50,000)	(33,317)	(35,000)	-100.0%	-100.0%
WAGE/BENEFITS TO OTHER CC PROJ	-	-	-	-	-	-100.0%	-100.0%
OVERTIME	-	87	395	-	422	6.8%	100.0%
FICA - SS EXPENSE	19,049	21,256	26,252	17,676	29,134	11.0%	64.8%
FICA - MEDI EXPENSE	4,836	5,331	6,735	5,010	7,287	8.2%	45.5%
MEDICAL INSURANCE	56,136	55,859	96,429	52,626	90,100	-6.6%	71.2%
DENTAL INSURANCE	3,054	2,632	4,003	2,145	3,813	-4.7%	77.8%
VISION INSURANCE	658	749	855	687	879	2.8%	27.9%
WORKERS COMP. INSURANCE	2,522	2,889	4,718	3,571	5,083	7.7%	42.4%
LIFE INSURANCE EXPENSE	1,332	1,433	1,740	1,551	1,871	7.5%	20.6%
BOOTS BENEFIT	247	134	690	690	710	2.9%	2.9%
SUI EXPENSE	963	685	956	956	984	2.9%	2.9%
ETT EXPENSE	33	29	29	27	31	6.9%	14.8%
DISABILITY PLAN	1,410	1,500	1,278	1,135	1,381	8.1%	21.7%
CALPERS RETIREMENT (ER) - Classic Plan	31,728	33,714	45,117	34,272	55,931	24.0%	63.2%
CALPERS RETIREMENT (EE) - Classic Plan	21,183	19,986	25,393	18,685	27,298	7.5%	46.1%
CALPERS-62 RETIREMENT (ER)	3,413	7,396	8,560	8,433	9,616	12.3%	14.0%
CALPERS-62 RETIREMENT (EE)	-	-	-	-	-	-	-
OPEB EXPENSE	17,961	-	25,392	22,080	-	-	-
<b>TOTAL SALARY &amp; BENEFIT</b>	<b>471,304</b>	<b>513,747</b>	<b>663,090</b>	<b>492,414</b>	<b>702,062</b>	<b>5.9%</b>	<b>42.6%</b>
BOOKS & REF MATERIALS	-	88	207	-	-	-	-
POSTAGE	49	-	138	-	-	-	-
PRINTING/ SCANNING SERVICES	667	1,013	345	-	-	-	-
OFFICE SUPPLY	-	-	345	-	-	-	-
GENERAL SUPPLY	-	101	-	-	-	-	-
MEMBERSHIPS & DUES	846	859	690	-	-	-	-
MAPPING SERVICES	-	-	30,000	30,000	40,000	33.3%	33.3%
ENGINEERING CONSULTANTS	238,882	380,382	132,000	215,504	220,000	66.7%	2.1%
DEVELOPER EXPENSES (NOT MCWD)	491,055	400,785	410,000	351,463	355,000	-13.4%	1.0%
DEVELOPER EXPENSES - METERS	96,382	94,916	60,000	105,345	110,000	83.3%	4.4%
<b>TOTAL DEPARTMENT EXPENSE</b>	<b>827,882</b>	<b>878,143</b>	<b>633,725</b>	<b>702,312</b>	<b>725,000</b>	<b>14.4%</b>	<b>3.2%</b>
<b>TOTAL EXPENSE</b>	<b>1,299,185</b>	<b>1,391,890</b>	<b>1,296,815</b>	<b>1,194,726</b>	<b>1,427,062</b>	<b>10.0%</b>	<b>19.4%</b>



**MARINA COAST WATER DISTRICT  
WATER RESOURCES BUDGET FOR FY 2018-2019**

ACCOUNT NAME	ORD WATER						
	2016-2017 ACTUAL	2017-2018 ACTUAL	2018-2019 ADOPTED	2018-2019 ESTIMATED	2019-2020 PROPOSED	BUD vs BUD % CHANGE	BUD vs EST % CHANGE
WAGES - ENG	-	-	91,228	64,912	114,692	25.7%	76.7%
WAGES-ALLOCATED TO CAPITAL	-	-	-	-	-	-	-
OVERTIME	-	-	-	-	-	-	-
FICA - SS EXPENSE	-	-	5,656	3,740	7,111	25.7%	90.2%
FICA - MEDI EXPENSE	-	-	1,323	875	1,663	25.7%	90.0%
MEDICAL INSURANCE	-	-	22,390	11,660	31,289	39.7%	168.4%
DENTAL INSURANCE	-	-	867	405	1,282	47.9%	216.7%
VISION INSURANCE	-	-	173	100	235	35.8%	135.8%
WORKERS COMP. INSURANCE	-	-	815	648	1,025	25.8%	58.2%
LIFE INSURANCE EXPENSE	-	-	322	272	410	27.3%	51.0%
UNIFORM BENEFIT	-	-	120	-	120	0.0%	-
BOOTS BENEFIT	-	-	240	-	240	0.0%	-
SUI EXPENSE	-	-	277	-	277	0.0%	-
ETT EXPENSE	-	-	8	-	8	0.0%	-
DISABILITY PLAN	-	-	61	198	118	93.4%	-40.3%
CALPERS RETIREMENT (ER) - Classic Plan	-	-	9,605	9,776	11,465	19.4%	17.3%
CALPERS RETIREMENT (EE) - Classic Plan	-	-	5,406	4,832	5,622	4.0%	16.4%
CALPERS-62 RETIREMENT (ER)	-	-	1,304	-	2,768	112.3%	-
CALPERS-62 RETIREMENT (EE)	-	-	-	-	-	-	-
OPEB EXPENSE	-	-	-	-	-	-	-
<b>TOTAL SALARY &amp; BENEFIT</b>	-	-	<b>139,795</b>	<b>97,415</b>	<b>178,325</b>	<b>27.6%</b>	<b>83.1%</b>
BOOKS & REFERENCE MATERIALS	-	-	300	300	3,000	900.0%	900.0%
MEMBERSHIPS & DUES	-	-	900	900	900	0.0%	0.0%
ENGINEERING CONSULTANTS	-	-	600,000	366,302	816,694	36.1%	123.0%
<b>TOTAL DEPARTMENT EXPENSE</b>	-	-	<b>601,200</b>	<b>367,502</b>	<b>820,594</b>	<b>36.5%</b>	<b>123.3%</b>
<b>TOTAL EXPENSE</b>	-	-	<b>740,995</b>	<b>464,918</b>	<b>998,919</b>	<b>34.8%</b>	<b>114.9%</b>

MARINA COAST WATER DISTRICT  
CAPITALIZED EQUIPMENT BUDGET FOR FY 2019-2020

ACCOUNT NAME	MARINA WATER					MARINA SEWER				
	2016-2017 ACTUAL	2017-2018 ACTUAL	2018-2019 ADOPTED	2018-2019 ESTIMATED	2019-2020 PROPOSED	2016-2017 ACTUAL	2017-2018 ACTUAL	2018-2019 ADOPTED	2018-2019 ESTIMATED	2019-2020 PROPOSED
LABORATORY	-	-	-	-	-	-	-	-	-	-
NETWORK COMPUTER SYSTEM	721	2,500	11,750	-	7,360	194	700	3,290	-	1,920
VEHICLES	32,594	19,422	-	-	11,500	3,717	5,438	-	-	3,000
O&M EQUIPMENT	3,381	8,616	22,541	22,000	137,080	910	2,412	22,339	22,000	171,300
<b>TOTAL EXPENSE</b>	<b>36,696</b>	<b>30,538</b>	<b>34,291</b>	<b>22,000</b>	<b>155,940</b>	<b>4,821</b>	<b>8,550</b>	<b>25,629</b>	<b>22,000</b>	<b>176,220</b>

ACCOUNT NAME	ORD WATER					ORD SEWER				
	2016-2017 ACTUAL	2017-2018 ACTUAL	2018-2019 ADOPTED	2018-2019 ESTIMATED	2019-2020 PROPOSED	2016-2017 ACTUAL	2017-2018 ACTUAL	2018-2019 ADOPTED	2018-2019 ESTIMATED	2019-2020 PROPOSED
LABORATORY	-	-	-	-	-	-	-	-	-	-
NETWORK COMPUTER SYSTEM	1,499	5,400	25,380	-	18,240	361	1,400	6,580	-	4,480
VEHICLES	36,726	41,952	-	-	28,500	6,903	10,877	-	-	7,000
O&M EQUIPMENT	7,022	25,032	48,689	48,000	391,920	1,691	16,626	48,296	48,296	224,700
<b>TOTAL EXPENSE</b>	<b>45,247</b>	<b>72,384</b>	<b>74,069</b>	<b>48,000</b>	<b>438,660</b>	<b>8,955</b>	<b>28,903</b>	<b>54,876</b>	<b>48,296</b>	<b>236,180</b>

ACCOUNT NAME	TOTAL					BUD vs BUD %CHANGE	BUD vs EST % CHANGE
	2016-2017 ACTUAL	2017-2018 ACTUAL	2018-2019 ADOPTED	2018-2019 ESTIMATED	2019-2020 PROPOSED		
LABORATORY	-	-	-	-	-	0.0%	0.0%
NETWORK COMPUTER SYSTEM	2,775	10,000	47,000	-	32,000	-31.9%	0.0%
VEHICLES	79,940	77,689	-	-	50,000	0.0%	0.0%
O&M EQUIPMENT	13,004	52,686	141,865	140,296	925,000	552.0%	0.0%
<b>TOTAL EXPENSE</b>	<b>95,719</b>	<b>140,375</b>	<b>188,865</b>	<b>140,296</b>	<b>1,007,000</b>	<b>433.2%</b>	<b>617.8%</b>

**Network Computer System**

Human Resource Software 12,000  
File/AD Controller Server Replacement 20,000 32,000

**Vehicles**

Variance from Board Vehicle Replacement Policy @ \$100,000/year 50,000

**O&M Equipment**

(3) Hypo Tank Replacements 40,000  
East Garrison Double Wall Chemical Tank 20,000  
Vactor 480,000  
(2) Diesel Tank Replacements (Giggling & Booker) 30,000  
(5) Conductivity Analyzers (Wells 29,30,31,34,WG) 40,000  
(3) Standby Generators (2-Marina/1-Ord) 250,000  
Dump Truck 65,000 925,000

**TOTAL** 1,007,000

MW	155,940	
MS	176,220	332,160
OW	438,660	
OS	236,180	674,840
		<b>1,007,000</b>

**MARINA COAST WATER DISTRICT  
CAPITAL IMPROVEMENT PROJECT BUDGET FOR FY 2019-2020**

<b>Project No.</b>	<b>Project Name</b>		<b>Amount</b>
OW-0206	Inter-Garrison Road Pipeline Up-Sizing	East Garrison	\$ 650,000
OW-0193	Imjin Parkway Pipeline, Resv. Rd to Abrams Dr	existing	\$ 800,000
OW-0202	South Boundary Road Pipeline	DRO and Monterey	\$ 160,000
OS-0147	Ord Village LS & Force Main Improvements	existing	\$ 2,500,000
OS-0205	Imjin Lift Station Improvements - Phase 1	East Garrison and UCMBEST	\$ 675,000
OS-0152	Hatten, Booker Neeson LS Improvements	existing	\$ 525,000
GW-0112	A1 & A2 Zone Tanks& B/C Booster Station	Ord & Marina	\$ 2,478,410
GW-0305	Calif. Ave & Imjin Pkwy Pipeline - Abrams to Marina Heights	Ord & Marina	\$ 136,000
GS-0200	Odor Control Project	Ord & Marina	\$ 78,000
WD-0106	Ord Remodel, Demolition and Rehab	existing - District Wide	\$ 353,600
RW-0306	RUWAP - Imjin Pkwy Reservation Rd to Abrams Dr	FORA	\$ 885,000
RW-0174	RUWAP - Distribution System	SRF	\$ 11,239,582
		<b>Total:</b>	<b>\$ 20,480,592</b>

**Summary by Cost Center**

		Existing	Development/Other
03 - Ft Ord Water	\$ 4,505,210	\$ 1,706,482	\$ 2,798,728
04 - Ft Ord Sewer	\$ 3,850,800	\$ 3,175,800	\$ 675,000
05 - Recycled Water	\$ 12,124,582		\$ 12,124,582
<b>Total:</b>	<b>\$ 20,480,592</b>	<b>\$ 4,882,282</b>	<b>\$ 15,598,310</b>

Capital Improvement Project Sheet

<b>Project:</b>	Inter-Garrison Road Pipeline Up-Sizing
<b>Project No:</b>	OW-0206
<b>Cost Center</b>	Ord Community Water

**Project Description**  
 This project entails the construction of approximately 1700-LF of 18-inch potable water pipeline in InterGarrison Road between Abrahms Drive and East Garrison to replace the existing 12-inch main. This will allow the District to meet commercial zone fire flows in East Garrison prior to building a B-Zone reservoir.

**Project Justification**  
 The East Garrison Developer has completed construction of the Phase 3 infrastructure and is building homes in the area. Commercial development will begin this fiscal year.

PROJECT COSTS:	FY 18/19	FY 19/20	FY 20/21	FY 21/22	FY 21/22	FY 22/23	OUT YEARS	Total
<b>Cost Category / Phasing</b>								
<b>Planning</b>								
External Services								0
Internal Services								0
<b>Design</b>								
External Services	45,000							45,000
Internal Services	5,000							5,000
<b>Construction</b>								
External Services		635,000						635,000
Internal Services		15,000						15,000
<b>Property / Easement Acquisitions</b>								0
<b>Other Project Costs</b>								0
<b>Estimated Cost By Fiscal Year</b>	<b>50,000</b>	<b>650,000</b>	<b>0</b>	<b>0</b>	<b>0</b>	<b>0</b>	<b>0</b>	<b>700,000</b>

Project Funding / Cost Centers	G L Code	% Cost	FY 18/19	FY 19/20	FY 20/21	FY 21/22	FY 21/22	FY 22/23	OUT YEARS	Total
01 - Marina Water		0%	0	0	0	0	0	0	0	0
03 - Ft Ord Water		100%	51,000	650,000	0	0	0	0	0	701,000
			0	0	0	0	0	0	0	0
			0	0	0	0	0	0	0	0
			0	0	0	0	0	0	0	0
<b>Funding By Fiscal Year</b>			<b>51,000</b>	<b>650,000</b>	<b>0</b>	<b>0</b>	<b>0</b>	<b>0</b>	<b>0</b>	<b>701,000</b>

Estimated Project Expenditures for FY 19/20:		Budget	Special Notes
<b>"Class "2" Cost Opinion: Estimated Range varies (-10%→+25%)"</b>			
<b>Project: Inter-Garrison Road Pipeline Up-sizing</b>			
<b>1- Design &amp; Planning Costs:</b>			
Internal Services : MCWD Staff time (Eng, O&M,Finances)		\$ -	Manage contract
External Services: (Attorneys, Consultants)		\$ -	Design
<b>Total Design &amp; Planning Cost:</b>		<b>\$ -</b>	
<b>2- Construction &amp; Installation Costs:</b>			
Internal Services : MCWD Staff time (Eng, O&M,Finances)		\$ 15,000	Const. Mgt
External Services: (Contractors)		\$ 635,000	Construction
<b>Total Construction &amp; Installation Costs:</b>		<b>\$ 650,000</b>	
<b>Property / Easement Acquisition: In ROW</b>			

Capital Improvement Project Sheet

<b>Project:</b>	Imjin Parkway Pipeline, Reservation Rd to Abrams Drive
<b>Project No:</b>	OW-0193
<b>Cost Center</b>	Ord Community Water

**Project Description**  
 This project entails the construction of approximately 2,800-LF of 12-inch PVC potable water pipeline in Imjin Parkway to improve connectivity within the B-Zone.

**Project Justification**  
 This project is sequenced to coincide with the City of Marina Project to widen Imjin Parkway.

PROJECT COSTS:	FY 18/19	FY 19/20	FY 20/21	FY 21/22	FY 21/22	FY 22/23	OUT YEARS	Total
<b>Cost Category / Phasing</b>								
<b>Planning</b>								
External Services								0
Internal Services								0
<b>Design</b>								
External Services	46,000							46,000
Internal Services	5,000							5,000
<b>Construction</b>								
External Services		780,000						780,000
Internal Services		20,000						20,000
<b>Property / Easement Acquisitions</b>								0
<b>Other Project Costs</b>								0
<b>Estimated Cost By Fiscal Year</b>	<b>51,000</b>	<b>800,000</b>	<b>0</b>	<b>0</b>	<b>0</b>	<b>0</b>	<b>0</b>	<b>851,000</b>

Project Funding / Cost Centers	G L Code	% Cost	FY 18/19	FY 19/20	FY 20/21	FY 21/22	FY 21/22	FY 22/23	OUT YEARS	Total
01 - Marina Water		0%	0	0	0	0	0	0	0	0
03 - Ft Ord Water		100%	51,000	800,000	0	0	0	0	0	851,000
			0	0	0	0	0	0	0	0
			0	0	0	0	0	0	0	0
			0	0	0	0	0	0	0	0
<b>Funding By Fiscal Year</b>			<b>51,000</b>	<b>800,000</b>	<b>0</b>	<b>0</b>	<b>0</b>	<b>0</b>	<b>0</b>	<b>851,000</b>

Estimated Project Expenditures for FY 19/20:		Budget	Special Notes
"Class "2" Cost Opinion: Estimated Range varies (-10%→+25%)"			
Project: Imjin Parkway Pipeline, Reservation Rd to Abrams Drive			
1- Design & Planning Costs:			
Internal Services : MCWD Staff time (Eng, O&M,Finances)		\$ -	Manage contract
External Services: (Attorneys, Consultants)		\$ -	Design
<b>Total Design &amp; Planning Cost:</b>		<b>\$ -</b>	
2- Construction & Installation Costs:			
Internal Services : MCWD Staff time (Eng, O&M,Finances)		\$ 20,000	Const. Mgt
External Services: (Contractors)		\$ 780,000	Construction
<b>Total Construction &amp; Installation Costs:</b>		<b>\$ 800,000</b>	
Property / Easement Acquisition: In ROW			

Capital Improvement Project Sheet

<b>Project:</b>	South Boundary Road Pipeline
<b>Project No:</b>	OW-0202
<b>Cost Center</b>	Ord Community Water

**Project Description**  
 This project entails the construction of approximately 7,300-LF of 24-inch potable water pipeline in South Boundary Road to serve Del Rey Oaks and Monterey.

**Project Justification**  
 This project is sequenced to coincide with the FORA project to widen South Boundary Road.

PROJECT COSTS:	FY 18/19	FY 19/20	FY 20/21	FY 21/22	FY 21/22	FY 22/23	OUT YEARS	Total
<b>Cost Category / Phasing</b>								
<b>Planning</b>								
External Services	37,000							37,000
Internal Services	3,000							3,000
<b>Design</b>								
External Services		150,000						150,000
Internal Services		10,000						10,000
<b>Construction</b>								
External Services			2,460,000					2,460,000
Internal Services			40,000					40,000
<b>Property / Easement Acquisitions</b>								0
<b>Other Project Costs</b>								0
<b>Estimated Cost By Fiscal Year</b>	<b>40,000</b>	<b>160,000</b>	<b>2,500,000</b>	<b>0</b>	<b>0</b>	<b>0</b>	<b>0</b>	<b>2,700,000</b>

Project Funding / Cost Centers	G L Code	% Cost	FY 18/19	FY 19/20	FY 20/21	FY 21/22	FY 21/22	FY 22/23	OUT YEARS	Total
01 - Marina Water		0%	0	0	0	0	0	0	0	0
03 - Ft Ord Water		100%	40,000	160,000	2,500,000	0	0	0	0	2,700,000
			0	0	0	0	0	0	0	0
			0	0	0	0	0	0	0	0
			0	0	0	0	0	0	0	0
<b>Funding By Fiscal Year</b>			<b>40,000</b>	<b>160,000</b>	<b>2,500,000</b>	<b>0</b>	<b>0</b>	<b>0</b>	<b>0</b>	<b>2,700,000</b>



Estimated Project Expenditures for FY 19/20:			Budget	Special Notes
<b>"Class "4" Cost Opinion: Estimated Range varies (-30%→+50%)"</b>				
<b>Project: South Boundary Road Pipeline</b>				
<b>1- Design &amp; Planning Costs:</b>				
Internal Services : MCWD Staff time (Eng, O&M,Finances)			\$ 10,000	Coordinate contracts
External Services: (Attorneys, Consultants)			\$ 150,000	Contract with roadway designer
<b>Total Design &amp; Planning Cost:</b>			<b>\$ 160,000</b>	
<b>2- Construction &amp; Installation Costs:</b>				
Internal Services : MCWD Staff time (Eng, O&M,Finances)				Const. Mgt
External Services: (Contractors)				Construction
<b>Total Construction &amp; Installation Costs:</b>			<b>\$ -</b>	
<b>Property / Easement Acquisition: FORA ROW</b>				

Capital Improvement Project Sheet

<b>Project:</b>	Ord Village LS & Force Main Improvements
<b>Project Number:</b>	OS-0147
<b>Cost Center:</b>	Ord Community Sewer

**Project Description**  
 This project includes reconstructing a the force main in a new alignment and relocating the existing lift station to a location east of Highway 1.

**Project Justification:**  
 The existing lift station & force main has burst many times causing spills and necessitating point repairs. The existing lift station, located west of Highway 1 use to be on Army controlled land that was transferred to the CA State Parks and is now considered environmentally sensitive land. Additionally, relocating the lift station will eliminate two Highway 1 pipeline crossings. The existing pumps were replaced with Flygt pumps in 2016.

PROJECT COSTS:	FY 18/19	FY 19/20	FY 20/21	FY 21/22	FY 21/22	FY 22/23	OUT YEARS	Total
<b>Cost Category / Phasing</b>								
<b>Planning</b>								
External Services	5,000	22,000						27,000
Internal Services	1,000	1,000						2,000
<b>Design</b>								
External Services	37,000	193,000						230,000
Internal Services	2,000	14,000						16,000
<b>Construction</b>								
External Services		2,240,000	0					2,240,000
Internal Services		30,000	0					30,000
<b>Property / Easement Acquisitions</b>								0
<b>Other Project Costs</b>								0
<b>Estimated Cost By Fiscal Year</b>	<b>45,000</b>	<b>2,500,000</b>	<b>0</b>	<b>0</b>	<b>0</b>	<b>0</b>	<b>0</b>	<b>2,545,000</b>

Project Funding / Cost Centers	G L Code	% Cost	FY 18/19	FY 19/20	FY 20/21	FY 21/22	FY 21/22	FY 22/23	OUT YEARS	Total
02 - Marina Sewer		0%	0	0	0	0	0	0	0	0
04 - Ft Ord Sewer		100%	45,000	2,500,000	0	0	0	0	0	2,545,000
			0	0	0	0	0	0	0	0
			0	0	0	0	0	0	0	0
			0	0	0	0	0	0	0	0
<b>Funding By Fiscal Year</b>			<b>45,000</b>	<b>2,500,000</b>	<b>0</b>	<b>0</b>	<b>0</b>	<b>0</b>	<b>0</b>	<b>2,545,000</b>

Estimated Project Expenditures for FY 19/20:		Budget	Special Notes
<b>"Class "4" Cost Opinion: Estimated Range varies (-30%→+50%)"</b>			
<b>Project: Ord Village LS &amp; Force Main Improvements</b>			
<b>1- Design &amp; Planning Costs:</b>			
Internal Services : MCWD Staff time (Eng, O&M,Finances)	\$	15,000	Coordinate Contracts and permitting
External Services: (Attorneys, Consultants)	\$	215,000	Design, environmental clearance and easements
<b>Total Design &amp; Planning Cost:</b>	<b>\$</b>	<b>230,000</b>	
<b>2- Construction &amp; Installation Costs:</b>			
Internal Services : MCWD Staff time (Eng, O&M,Finances)	\$	30,000	Project/Construction Management
External Services: (Contractors)	\$	2,240,000	Construction Contract, Management, Testing and Inspection
<b>Total Construction &amp; Installation Costs:</b>	<b>\$</b>	<b>2,270,000</b>	
<b>Property / Easement Acquisition: Lift Station Easement from City of Seaside</b>			

Capital Improvement Project Sheet

<b>Project:</b>	Imjin LS & Force Main Improvements - Phase I
<b>Project Number:</b>	OS-0205
<b>Cost Center:</b>	Ord Community Sewer

**Project Description**  
 The first phase of this project includes constructing another wetwell, installing two Flygt pumps with all accessories and appurtenances and space to add a third pump. The second Phase will be to install the third pump and replace the forcemain in conjunction with the Imjin Road widening project.

**Project Justification:**  
 The existng lift station and forcemain can't handle all the anticipated wastewater flows from East Garrison, UCMBEST, Marina Airport, Existing Marina lift Station as was stated in the Ord Community Wastewater Master Plan; the project will be split into two phases and is necessary to accommodate near to long term future development

PROJECT COSTS:	FY 18/19	FY 19/20	FY 20/21	FY 21/22	FY 21/22	FY 22/23	OUT YEARS	Total
<b>Cost Category / Phasing</b>								
<b>Planning</b>								
External Services								0
Internal Services								0
<b>Design</b>								
External Services	36,000	4,000						40,000
Internal Services	4,000	1,000						5,000
<b>Construction</b>								
External Services		640,000						640,000
Internal Services		30,000						30,000
<b>Property Easement / Acquisitions</b>								0
<b>Other Project Costs</b>								0
<b>Estimated Cost By Fiscal Year</b>	<b>40,000</b>	<b>675,000</b>	<b>0</b>	<b>0</b>	<b>0</b>	<b>0</b>	<b>0</b>	<b>715,000</b>

Project Funding / Cost Centers	G L CODE	% Cost	FY 18/19	FY 19/20	FY 20/21	FY 21/22	FY 21/22	FY 22/23	OUT YEARS	Total
02 - Marina Sewer		0%	0	0	0	0	0	0	0	0
04 - Ft Ord Sewer		100%	40,000	675,000	0	0	0	0	0	715,000
			0	0	0	0	0	0	0	0
			0	0	0	0	0	0	0	0
			0	0	0	0	0	0	0	0
<b>Funding By Fiscal Year</b>			<b>40,000</b>	<b>675,000</b>	<b>0</b>	<b>0</b>	<b>0</b>	<b>0</b>	<b>0</b>	<b>715,000</b>

Estimated Project Expenditures for FY 19/20:		Budget	Special Notes
<b>"Class "2" Cost Opinion: Estimated Range varies (-10%→+25%)"</b>			
<b>Project: Imjin LS &amp; Force Main Improvements - Phase I</b>			
<b>1- Design &amp; Planning Costs:</b>			
Internal Services : MCWD Staff time (Eng, O&M,Finances)	\$	1,000	Master plan integration, scope, conceptual design
External Services: (Attorneys, Consultants)	\$	4,000	commencing design/ plans preparation
<b>Total Design &amp; Planning Cost:</b>	<b>\$</b>	<b>5,000</b>	
<b>2- Construction &amp; Installation Costs:</b>			
Internal Services : MCWD Staff time (Eng, O&M,Finances)	\$	30,000	Project/Construction Management
External Services: (Contractors)	\$	640,000	Construction Contract(Labor/Material)
<b>Total Construction &amp; Installation Costs:</b>	<b>\$</b>	<b>670,000</b>	
<b>Property / Easement Acquisition:</b>			

Capital Improvement Project Sheet

<b>Project:</b>	Hatten, Booker, Neeson LS Improvements
<b>Project Number:</b>	OS-0152
<b>Cost Center:</b>	Ord Community Sewer

**Project Description**  
 Replacement of Hatten, Booker and Neeson wastewater lift stations.  
 Hatten and Neeson Lift Stations will be replaced in 2018/19. Booker will be addressed in later years.

**Project Justification:**  
 The existing lift stations are reaching the end of their service life. Capacity increases are not required.

PROJECT COSTS:	FY 18/19	FY 19/20	FY 20/21	FY 21/22	FY 21/22	FY 22/23	OUT YEARS	Total
<b>Cost Category / Phasing</b>								
<b>Planning</b>								
External Services								0
Internal Services								0
<b>Design</b>								
External Services		50,000					30,000	80,000
Internal Services		5,000					3,000	8,000
<b>Construction</b>								
External Services		460,000					362,000	822,000
Internal Services		10,000					5,000	15,000
<b>Property Easement / Acquisitions</b>								0
<b>Other Project Costs</b>								0
<b>Estimated Cost By Fiscal Year</b>	0	525,000	0	0	0	0	400,000	925,000

Project Funding / Cost Centers	G L CODE	% Cost	FY 18/19	FY 19/20	FY 20/21	FY 21/22	FY 21/22	FY 22/23	OUT YEARS	Total
02 - Marina Sewer		0%	0	0	0	0	0	0	0	0
04 - Ft Ord Sewer		100%	0	525,000	0	0	0	0	400,000	925,000
			0	0	0	0	0	0	0	0
			0	0	0	0	0	0	0	0
			0	0	0	0	0	0	0	0
<b>Funding By Fiscal Year</b>			0	525,000	0	0	0	0	400,000	925,000

<b>Estimated Project Expenditures for FY 19/20:</b>			<b>Budget</b>	<b>Special Notes</b>					
<b>"Class "2" Cost Opinion: Estimated Range varies (-10%→+25%)"</b>									
<b>Project: Hatten, Booker, Neeson LS Improvements</b>									
<b>1- Design &amp; Planning Costs:</b>									
	Internal Services : MCWD Staff time (Eng, O&M,Finances)		\$ 5,000	Design review and permitting					
	External Services: (Attorneys, Consultants)		\$ 50,000	Design Plans & Specs					
<b>Total Design &amp; Planning Cost:</b>			<b>\$ 55,000</b>						
<b>2- Construction &amp; Installation Costs:</b>									
	Internal Services : MCWD Staff time (Eng, O&M,Finances)		\$ 10,000	Project/Construction Management/Inspection					
	External Services: (Contractors)		\$ 460,000	Construction Contract(Labor/Material)					
<b>Total Construction &amp; Installation Costs:</b>			<b>\$ 470,000</b>						
<b>Property / Easement Acquisition: NA</b>									

Capital Improvement Project

<b>Project:</b>	<b>A1 &amp; A2 Zone Tanks &amp; B/C Booster Station</b>
<b>Project Number:</b>	<b>GW-0112</b>
<b>Cost Center:</b>	<b>Ord Community Water; Marina Water</b>

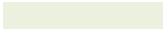
**Project Description**  
 Two A-Zone storage tanks with a total usable storage capacity of 3.2 Million Gallons, B-Zone and C-Zone Booster Pump Station, and associated piping and facilities. The project location is on the CSUMB main campus northwest of the interesection of Inter-Garrison Rd and 6th Ave. CSUMB will require architectural treatments not to exceed 10% of the cost of the tanks and buildings. Tank construction is assumed to be steel. A prestressed concrete tank would entail a 33% increase in cost.

**Project Justification**  
 The District has minimal "A" Zone storage capacity. The A1/A2 Zone Tanks are to provide operational, fire, and emergency water storage for Zone A in the Ord Community and Central Marina. The B and C booster pumps will pump water from the A zone tanks to Zones B and C. The facilities currently serving these functions are over sixty years old and are approaching the end of their useful life.

<b>PROJECT COSTS:</b>	<b>FY 18/19</b>	<b>FY 19/20</b>	<b>FY 20/21</b>	<b>FY 21/22</b>	<b>FY 21/22</b>	<b>FY 22/23</b>	<b>OUT YEARS</b>	<b>Total</b>
<b>Cost Category / Phasing</b>								
<b>Planning</b>								
External Services	36,000	125,000						161,000
Internal Services	4,000	14,000						18,000
<b>Design</b>								
External Services		250,720	30,000	30,000				310,720
Internal Services		25,000	5,000	10,000				40,000
<b>Construction</b>								
External Services		3,200,000	3,200,000	3,300,000				9,700,000
Internal Services		30,000	30,000	30,000				90,000
<b>Property Easement / Acquisitions</b>								0
<b>Property rights have been paid for through a settlement agreement with CSUMB</b>								
<b>Other Project Costs</b>								0
<b>Estimated Cost By Fiscal Year</b>	<b>40,000</b>	<b>3,644,720</b>	<b>3,265,000</b>	<b>3,370,000</b>	<b>0</b>	<b>0</b>	<b>0</b>	<b>10,319,720</b>

<b>Project Funding / Cost Centers</b>	<b>G L CODE</b>	<b>% Cost Splits</b>	<b>FY 18/19</b>	<b>FY 19/20</b>	<b>FY 20/21</b>	<b>FY 21/22</b>	<b>FY 21/22</b>	<b>FY 22/23</b>	<b>OUT YEARS</b>	<b>Total</b>
02 - Marina Sewer		0%	0	0	0	0	0	0	0	0
03 - Ft Ord Water		68%	27,200	2,478,410	2,220,200	2,291,600	0	0	0	7,017,410
04 - Ft Ord Sewer		0%	0	0	0	0	0	0	0	0
			0	0	0	0	0	0	0	0
<b>Funding By Fiscal Year</b>			<b>40,000</b>	<b>3,644,720</b>	<b>3,265,000</b>	<b>3,370,000</b>	<b>0</b>	<b>0</b>	<b>0</b>	<b>10,319,720</b>





Estimated Project Expenditures for FY 19/20:		Budget	Special Notes						
<b>"Class "4" Cost Opinion: Estimated Range varies (-30%→+50%)"</b>									
<b>A1 &amp; A2 Zone Tanks &amp; B/C Booster Pump Station</b>									
<b>1- Design Planning Costs:</b>									
	Internal Services: MCWD Staff Time (Eng. O&M, F	\$ 4,000	\$ 39,000	Civil Design, Architecture & Permitting					
	External Services: (Attorney, Consultants)	\$ 36,000	\$ 375,720	Survey & Mapping, CEQA & Civil Design					
<b>Total Design and Planning Cost:</b>		<b>\$ 40,000</b>	<b>\$ 414,720</b>						
<b>2- Construction &amp; Installation Costs:</b>									
	Internal Services: MCWD Staff Time (Eng. O&M, F	\$ -	\$ 30,000	Construction Award, Management & Oversight					
	External Services: (Contractors)	\$ -	\$ 3,200,000	Construction Contract (Equipment, Materials & Labor)					
<b>Total Construction and Installation Cost</b>		<b>\$ -</b>	<b>\$ 3,230,000</b>						
<b>Property / Easement Acquisition</b>		<b>CSUMB</b>							

Capital Improvement Project

<b>Project:</b>	California Avenue and Imjin Pkwy Pipeline - Abrams Dr to Marina Heights Dr
<b>Project Number:</b>	GW-0305
<b>Cost Center:</b>	Ord Community Water; Marina Water

**Project Description**  
 This project entails the construction of approximately 2,550 feet of 24" diameter pipeline in Imjin Parkway and California Avenue from Abrams Drive to Marina-Heights Drive.

**Project Justification**  
 This project identified in the Marina Heights Master Plan will reroute A zone transmission around the Sand Tank and existing B/C booster pump station to feed the new A1/A2 tanks and new B and C booster pumps that will serve the B and C pressure zones.

PROJECT COSTS:	FY 18/19	FY 19/20	FY 20/21	FY 21/22	FY 21/22	FY 22/23	OUT YEARS	Total
<b>Cost Category / Phasing</b>								
<b>Planning</b>								
External Services		20,000						20,000
Internal Services		2,000						2,000
<b>Design</b>								
External Services		168,000	18,000					186,000
Internal Services		10,000	2,000					12,000
<b>Construction</b>								
External Services			2,140,000					2,140,000
Internal Services			40,000					40,000
<b>Property Easement / Acquisitions</b>								0
<b>Property rights have been paid for through a settlement agreement with CSUMB</b>								
<b>Other Project Costs</b>								0
<b>Estimated Cost By Fiscal Year</b>	<b>0</b>	<b>200,000</b>	<b>2,200,000</b>	<b>0</b>	<b>0</b>	<b>0</b>	<b>0</b>	<b>2,400,000</b>

Project Funding / Cost Centers	G L CODE	% Cost	FY 18/19	FY 19/20	FY 20/21	FY 21/22	FY 21/22	FY 22/23	OUT YEARS	Total
01 - Marina Water		32%	0	64,000	704,000	0	0	0	0	768,000
02 - Marina Sewer		0%	0	0	0	0	0	0	0	0
03 - Ft Ord Water		68%	0	136,000	1,496,000	0	0	0	0	1,632,000
04 - Ft Ord Sewer		0%	0	0	0	0	0	0	0	0
			0	0	0	0	0	0	0	0
<b>Funding By Fiscal Year</b>			<b>0</b>	<b>200,000</b>	<b>2,200,000</b>	<b>0</b>	<b>0</b>	<b>0</b>	<b>0</b>	<b>2,400,000</b>



Estimated Project Expenditures for FY 19/20:		Budget		Special Notes	
"Class "4" Cost Opinion: Estimated Range varies (-30%→+50%)"					
Project: California Avenue and Imjin Parkway Pipeline - Abrams Dr to Marina-Heights Drive					
<b>1- Design Planning Costs:</b>					
	Internal Services: MCWD Staff Time (Eng. O&M, F	\$ -	\$ 12,000	Civil Design & Permitting	
	External Services: (Attorney, Consultants)	\$ -	\$ 188,000	Survey & Mapping, CEQA & Civil Design	
<b>Total Design and Planning Cost:</b>		\$ -	\$ 200,000		
<b>2- Construction &amp; Installation Costs:</b>					
	Internal Services: MCWD Staff Time (Eng. O&M, F	\$ -	\$ -	Construction Award, Management & Oversight	
	External Services: (Contractors)	\$ -	\$ -	Construction Contract (Equipment, Materials & Labor)	
<b>Total Construction and Installation Cost</b>		\$ -	\$ -		
<b>Property / Easement Acquisition</b>		<b>CSUMB</b>			

Capital Improvement Project

<b>Project:</b>	Odor Control Project
<b>Project Number:</b>	GS-0200
<b>Cost Center:</b>	Ord Community Water; Marina Water

<b>Project Description</b>
Installation of an odor control system to reduce or eliminate offensive odors emanating from lift stations.

<b>Project Justification</b>
Lift Stations can emit nauseous odors including methane, ammonia and hydrogen sulfide. Installation of an odor control system can reduce or eliminate the offensive odors.

PROJECT COSTS:	FY 18/19	FY 19/20	FY 20/21	FY 21/22	FY 21/22	FY 22/23	OUT YEARS	Total
<b>Cost Category / Phasing</b>								
<b>Planning</b>								
External Services								0
Internal Services								0
<b>Design</b>								
External Services		18,000						18,000
Internal Services		1,000						1,000
<b>Construction</b>								
External Services		95,000						95,000
Internal Services		6,000						6,000
<b>Property Easement / Acquisitions</b>								0
<b>Property rights have been paid for through a settlement agreement with CSUMB</b>								
<b>Other Project Costs</b>								0
<b>Estimated Cost By Fiscal Year</b>	<b>0</b>	<b>120,000</b>	<b>0</b>	<b>0</b>	<b>0</b>	<b>0</b>	<b>0</b>	<b>120,000</b>

Project Funding / Cost Centers	G L CODE	% Cost	FY 18/19	FY 19/20	FY 20/21	FY 21/22	FY 21/22	FY 22/23	OUT YEARS	Total
01 - Marina Water		0%	0	0	0	0	0	0	0	0
02 - Marina Sewer		35%	0	42,000	0	0	0	0	0	42,000
03 - Ft Ord Water		0%	0	0	0	0	0	0	0	0
04 - Ft Ord Sewer		65%	0	78,000	0	0	0	0	0	78,000
			0	0	0	0	0	0	0	0
<b>Funding By Fiscal Year</b>			<b>0</b>	<b>120,000</b>	<b>0</b>	<b>0</b>	<b>0</b>	<b>0</b>	<b>0</b>	<b>120,000</b>



Estimated Project Expenditures for FY 19/20:		Budget	Special Notes						
"Class "4" Cost Opinion: Estimated Range varies (-30%→+50%)"									
Project: Odor Control Project									
<b>1- Design Planning Costs:</b>									
	Internal Services: MCWD Staff Time (Eng. O&M, F	\$ -	\$ 1,000	Civil Design & Permitting					
	External Services: (Attorney, Consultants)	\$ -	\$ 18,000	Survey & Mapping, CEQA & Civil Design					
<b>Total Design and Planning Cost:</b>		\$ -	\$ 19,000						
<b>2- Construction &amp; Installation Costs:</b>									
	Internal Services: MCWD Staff Time (Eng. O&M, F	\$ -	\$ 6,000	Construction Award, Management & Oversight					
	External Services: (Contractors)	\$ -	\$ 95,000	Construction Contract (Equipment, Materials & Labor)					
<b>Total Construction and Installation Cost</b>		\$ -	\$ 101,000						
<b>Property / Easement Acquisition</b>									
	CSUMB								

Capital Improvement Project

<b>Project:</b>	Corporation Yard Demolition and Rehab
<b>Project Number:</b>	WD - 0106
<b>Cost Center:</b>	Water District Wide

**Project Description**  
 This project includes demolishing 2 buildings, installing a storage building and remodeling the Ord office for technology and work space.

**Project Justification**  
 Equipment stored outside exposed to the elements deteriorates and rusts long before the useful life

PROJECT COSTS:	FY 18/19	FY 19/20	FY 20/21	FY 21/22	FY 21/22	FY 22/23	OUT YEARS	Total
<b>Cost Category / Phasing</b>								
<b>Planning</b>								
External Services								0
Internal Services								0
<b>Design</b>								
External Services		50,000		40,000	265,000			355,000
Internal Services		10,000		10,000	25,000			45,000
<b>Construction</b>								
External Services	22,000	450,000		440,000	2,670,000		2,000,000	5,582,000
Internal Services	2,000	10,000		10,000	40,000			62,000
<b>Property Easement / Acquisitions</b>								0
<b>Other Project Costs</b>								0
<b>Estimated Cost By Fiscal Year</b>	<b>24,000</b>	<b>520,000</b>	<b>0</b>	<b>500,000</b>	<b>3,000,000</b>	<b>0</b>	<b>2,000,000</b>	<b>6,044,000</b>

Project Funding / Cost Centers	G L CODE	% Cost	FY 18/19	FY 19/20	FY 20/21	FY 21/22	FY 21/22	FY 22/23	OUT YEARS	Total
01 - Marina Water		25%	6,000	130,000	0	125,000	750,000	0	500,000	1,511,000
02 - Marina Sewer		7%	1,680	36,400	0	35,000	210,000	0	140,000	423,080
03 - Ft Ord Water		54%	12,960	280,800	0	270,000	1,620,000	0	1,080,000	3,263,760
04 - Ft Ord Sewer		14%	3,360	72,800	0	70,000	420,000	0	280,000	846,160
			0	0	0	0	0	0	0	0
<b>Funding By Fiscal Year</b>			<b>24,000</b>	<b>520,000</b>	<b>0</b>	<b>500,000</b>	<b>3,000,000</b>	<b>0</b>	<b>2,000,000</b>	<b>6,044,000</b>

Estimated Project Expenditures for FY 19/20:		Budget		Special Notes	
<b>"Class "4" Cost Opinion: Estimated Range varies (-30%→+50%)"</b>					
<b>Project: Corporation Yard Demolition and Rehab</b>					
<b>1- Design Planning Costs:</b>					
	Internal Services: MCWD Staff Time (Eng. O&M, FI	\$ -	\$ 10,000	Design	
	External Services: (Attorney, Consultants)	\$ -	\$ 50,000	Architectural Design and Permitting	
<b>Total Design and Planning Cost:</b>		<b>\$ -</b>	<b>\$ 60,000</b>		
<b>2- Construction &amp; Installation Costs:</b>					
	Internal Services: MCWD Staff Time (Eng. O&M, FI	\$ 2,000	\$ 10,000	Construction Award, Management & Oversight	
	External Services: (Contractors)	\$ 22,000	\$ 450,000	Abatement & Construction (Equipment, Materials & Labor)	
<b>Total Construction and Installation Cost</b>		<b>\$ 24,000</b>	<b>\$ 460,000</b>		
<b>Property / Easement Acquisition</b>				<b>None</b>	

Capital Improvement Project Sheet

<b>Project:</b>	Recycled Urban Water Augmentation Project - Imjin Parkway from Reservation Rd. to Abrams Dr.
<b>Project No:</b>	RW-0306
<b>Cost Center:</b>	Recycled Water

**Project Description**  
 This project entails the construction of approximately 2,800 LF of 12-inch PVC recycled water pipeline in Imjin Parkway .

**Project Justification**  
 This project is sequenced to coincide with the City of Marina Project to widen Imjin Parkway.

PROJECT COSTS:	FY 18/19	FY 19/20	FY 20/21	FY 21/22	FY 21/22	FY 22/23	OUT YEARS	Total
<b>Cost Category / Phasing</b>								
<b>Planning</b>								
External Services								0
Internal Services								0
<b>Design</b>								
External Services		40,000						40,000
Internal Services		5,000						5,000
<b>Construction</b>								
External Services		810,000						810,000
Internal Services		30,000						30,000
<b>Property Easement / Acquisitions</b>								0
<b>Other Project Costs</b>								0
<b>Estimated Cost By Fiscal Year</b>	0	885,000	0	0	0	0	0	885,000

Project Funding / Cost Centers	G L CODE	% Cost	FY 18/19	FY 19/20	FY 20/21	FY 21/22	FY 21/22	FY 22/23	OUT YEARS	Total
05 - Recycled Water		100%	0	885,000	0	0	0	0	0	885,000
			0	0	0	0	0	0	0	
			0	0	0	0	0	0	0	
<b>Funding By Fiscal Year</b>			0	885,000	0	0	0	0	0	885,000



Estimated Project Expenditures for FY 19/20:		Budget	Special Notes
<b>"Class "2" Cost Opinion: Estimated Range varies (-10%→+25%)"</b>			
<b>Project: Recycled Trunk Main and Booster, MRWPCA to Normandy</b>			
<b>1- Design &amp; Planning Costs:</b>			
Internal Services : MCWD Staff time (Eng, O&M,Finances)		\$ 5,000	Design Review/coordination
External Services: (Attorneys, Consultants)		\$ 40,000	Design updates-possible rerouting.
<b>Total Design &amp; Planning Cost:</b>		<b>\$ 45,000</b>	
<b>2- Construction &amp; Installation Costs:</b>			
Internal Services : MCWD Staff time (Eng, O&M,Finances)		\$ 30,000	Permitting, Construction Award, Coordination & Oversight
External Services: (Contractors)		\$ 810,000	Construction (Equipment, Materials and Labor), Const. Management & Environmental
<b>Total Construction &amp; Installation Costs:</b>		<b>\$ 840,000</b>	
<b>Property / Easement Acquisition:</b>		<b>Pending CSUMB</b>	

Capital Improvement Project Sheet

<b>Project:</b>	Recycled Urban Water Augmentation Project - Distribution System
<b>Project No:</b>	RW-0174
<b>Cost Center:</b>	Recycled Water

**Project Description**  
 This project is for completing the Recycled Water distribution laterals off of the transmission main at Coe Ave., Ninth Ave, Abrams Dr., Imjin Rd., Reservation Rd. Carmel Ave., and Beach Rd. To tie in existing irrigation systems ready for recycled water.

**Project Justification**  
 The design and construction needs to be completed in order to implement Recycled Water as a water source to meet the needs of MCWDs' customers and to augment the current groundwater supply source for FORA.

PROJECT COSTS:	FY 18/19	FY 19/20	FY 20/21	FY 21/22	FY 21/22	FY 22/23	OUT YEARS	Total
<b>Cost Category / Phasing</b>								
<b>Planning</b>								
External Services								0
Internal Services								0
<b>Design</b>								
External Services	190,000	210,000						400,000
Internal Services	10,000	10,000						20,000
<b>Construction</b>								
External Services		11,000,000						11,000,000
Internal Services		19,582						19,582
<b>Property Easement / Acquisitions</b>								0
<b>Other Project Costs</b>								0
<b>Estimated Cost By Fiscal Year</b>	<b>200,000</b>	<b>11,239,582</b>	<b>0</b>	<b>0</b>	<b>0</b>	<b>0</b>	<b>0</b>	<b>11,439,582</b>

Project Funding / Cost Centers	G L CODE	% Cost	FY 18/19	FY 19/20	FY 20/21	FY 21/22	FY 21/22	FY 22/23	OUT YEARS	Total
05 - Recycled Water		100%	200,000	11,239,582	0	0	0	0	0	11,439,582
			0	0	0	0	0	0	0	
			0	0	0	0	0	0	0	
<b>Funding By Fiscal Year</b>			<b>200,000</b>	<b>11,239,582</b>	<b>0</b>	<b>0</b>	<b>0</b>	<b>0</b>	<b>0</b>	<b>11,439,582</b>

Estimated Project Expenditures for FY 19/20:		Budget	Special Notes
<b>"Class "3" Cost Opinion: Estimated Range varies (-20%→+35%)"</b>			
<b>Project: Recycled Urban Water Augmentation Project - Distribution System</b>			
<b>1- Design &amp; Planning Costs:</b>			
Internal Services : MCWD Staff time (Eng, O&M,Finances)		\$ 10,000	Design Review/coordination
External Services: (Attorneys, Consultants)		\$ 210,000	Complete Design
<b>Total Design &amp; Planning Cost:</b>		<b>\$ 220,000</b>	
<b>2- Construction &amp; Installation Costs:</b>			
Internal Services : MCWD Staff time (Eng, O&M,Finances)		\$ 19,582	Construction Award, Management & Oversight
External Services: (Contractors)		\$ 11,000,000	Construction (Equipment, Materials and Labor), Const. Management & Environmental
<b>Total Construction &amp; Installation Costs:</b>		<b>\$ 11,019,582</b>	
Property / Easement Acquisition:		<b>Yet to be determined, pending negotiations.</b>	

MARINA COAST WATER DISTRICT  
RESERVE DETAIL  
PROJECTED FOR JUNE 30, 2019

<u>Description</u>	OW	OS	RUWAP	TOTAL
<b>1 Debt Reserve Fund*</b>				
2 Debt Reserve Fund (2010 Bond)*	424,740	118,933	-	543,673
3 Final 2010 Bond Payment - [G]	(424,740)	(118,933)	-	(543,673)
4 CPCFA*				-
<b>5 Total Debt Reserve Fund*</b>	-	-	-	-
<b>6 Capital Reserve Fund</b>				
6 Capacity Charge/Capital Surcharge Fund**	10,136,272	2,667,154	-	12,803,426
7 Capital Replacement & Improvement Fund**	70,183	1,691	-	71,874
8 Administrative Reserve Fund	50,000	50,000	-	100,000
9 Operating Reserve Fund	2,065,418	1,121,078	-	3,186,495
<b>10 Total Projected Reserve at 06-30-2019</b>	<b>12,321,873</b>	<b>3,839,922</b>	<b>-</b>	<b>16,161,795</b>
<b>11 FY 2018-2019 Capital Reserve Fund</b>				
12 Beginning Balance	-	-	-	-
13 Proposed transfers from operations - [A]	-	-	-	-
14 Proposed transfers to operations - [B]	-	-	-	-
15 Proposed Capital Costs	-	-	-	-
16 Due to/(Due From) Interfund Transfers	-	-	-	-
<b>17 Proposed Ending Balance as of 06-30-2020</b>	<b>-</b>	<b>-</b>	<b>-</b>	<b>-</b>
<b>18 FY 2018-2019 Capacity Charge/Capital Surcharge Fund</b>				
19 Beginning Balance	10,136,272	2,667,154	-	12,803,426
20 Proposed Capacity Fees/Capital Surcharges [C]	1,579,439	566,895	-	2,146,334
21 Proposed Capital Costs [D]	(2,798,728)	(675,000)	-	(3,473,728)
22 Annual Debt Service Share [E]	(442,633)	(277,095)	(586,949)	(1,306,677)
23 Intrafund Transfers			315,418	315,418
24 Due to/(Due From) Interfund Transfers	(271,531)	-	271,531	-
<b>25 Proposed Ending Balance as of 06-30-2020</b>	<b>8,202,820</b>	<b>2,281,953</b>	<b>-</b>	<b>10,484,773</b>
<b>FY 2018-2019 Capital Replacement &amp; Improvement Fund</b>				
26 Beginning Balance	70,183	1,691	-	71,874
27 Proposed transfers from operations per Board Policy	200,000	100,000	-	300,000
28 Proposed transfers from operations - [A]	-	-	-	-
29 Proposed transfers to operations - [B]	-	-	-	-
30 Proposed Capacity Fees/Capital Surcharges [C]	419,851	150,693	-	570,544
31 Proposed Capital Costs [D]	(2,145,142)	(3,411,980)	-	(5,557,122)
31 New Debt Proceeds [F]	2,150,000	3,500,000	-	5,650,000
32 Intrafund Transfers				-
33 Due to/(Due From) Interfund Transfers	-	-	-	-
<b>34 Proposed Ending Balance as of 06-30-2020</b>	<b>694,892</b>	<b>340,404</b>	<b>-</b>	<b>1,035,296</b>
<b>35 FY 2018-2019 Administrative Reserve Fund</b>	<b>50,000</b>	<b>50,000</b>	<b>-</b>	<b>100,000</b>
<b>36 FY 2018-2019 Operating Reserve</b>				
37 Beginning operating reserve	2,065,418	1,121,078	-	3,186,495
38 Proposed transfers from operations - [A]	147,752	1,050,720	315,418	1,513,890
39 Proposed transfers to operations - [B]	-	-	-	-
40 Intrafund Transfers			(315,418)	(315,418)
41 Due to/(Due From) Interfund Transfers	-	-	-	-
<b>42 Proposed Ending Balance as of 06-30-2020</b>	<b>2,213,170</b>	<b>2,171,798</b>	<b>-</b>	<b>4,384,967</b>
43 6 mths avg operating expenses required by Board***	4,447,599	1,017,600	-	5,465,199
<b>44 Operating Reserve Balance over/(under) per Board Policy as of 06-30-2020</b>	<b>(2,234,430)</b>	<b>1,154,197</b>	<b>-</b>	<b>(1,080,233)</b>
<b>45 TOTAL PROPOSED ENDING RESERVE BALANCE AS OF 06-30-2020</b>	<b>11,160,881</b>	<b>4,844,155</b>	<b>-</b>	<b>16,005,036</b>
<b>46 Transfer (From)/To Reserves A+B+C +D+E+F +G Net</b>	<b>(1,514,201)</b>	<b>785,300</b>	<b>(271,531)</b>	<b>(1,000,432)</b>

\* Held by external Agencies

\*\* Restricted to only capital spending

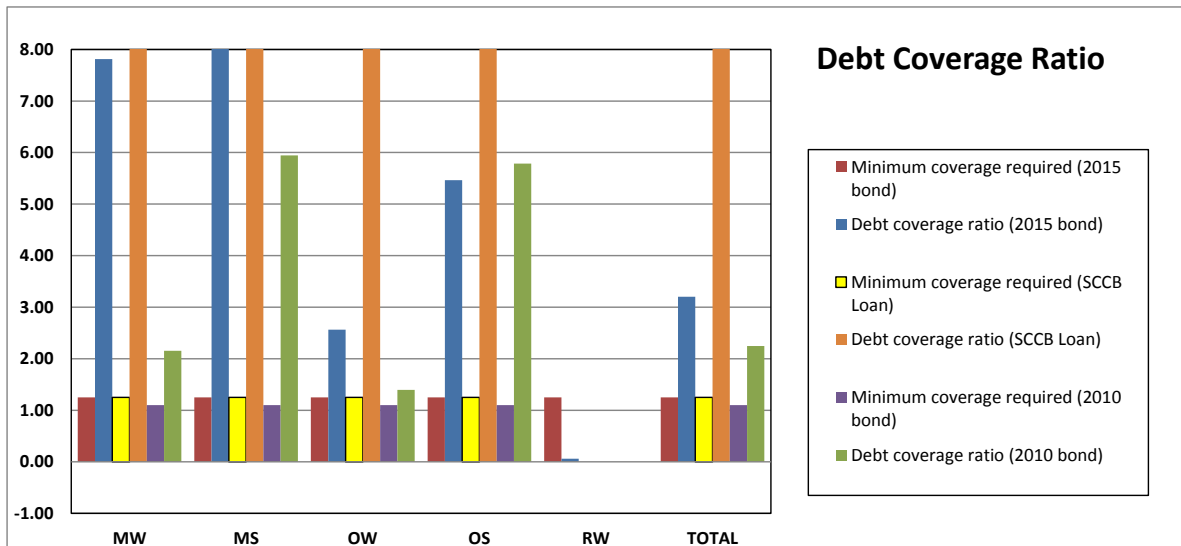
\*\*\*Per Board Policy

**MARINA COAST WATER DISTRICT  
DEBT SERVICE  
BUDGET FY 2019-2020**

DESCRIPTION	PRINCIPAL AMOUNT	LOAN DATE	FINAL PAYMENT	REMAINING PRINCIPAL	PRINCIPAL AMOUNT	TOTAL
2010 SERIES BOND	8,495,000	12/23/2010	6/1/2020	1,735,000	1,735,000	-
2015 SERIES A BOND	29,840,000	7/15/2015	6/1/2037	27,045,000	995,000	26,050,000
SANTA CRUZ COUNTY BANK LOAN	2,799,880	1/20/2017	1/20/2037	2,640,374	86,797	2,553,577
<b>CURRENT LOAN</b>				<b>31,420,374</b>	<b>2,816,797</b>	<b>28,603,577</b>

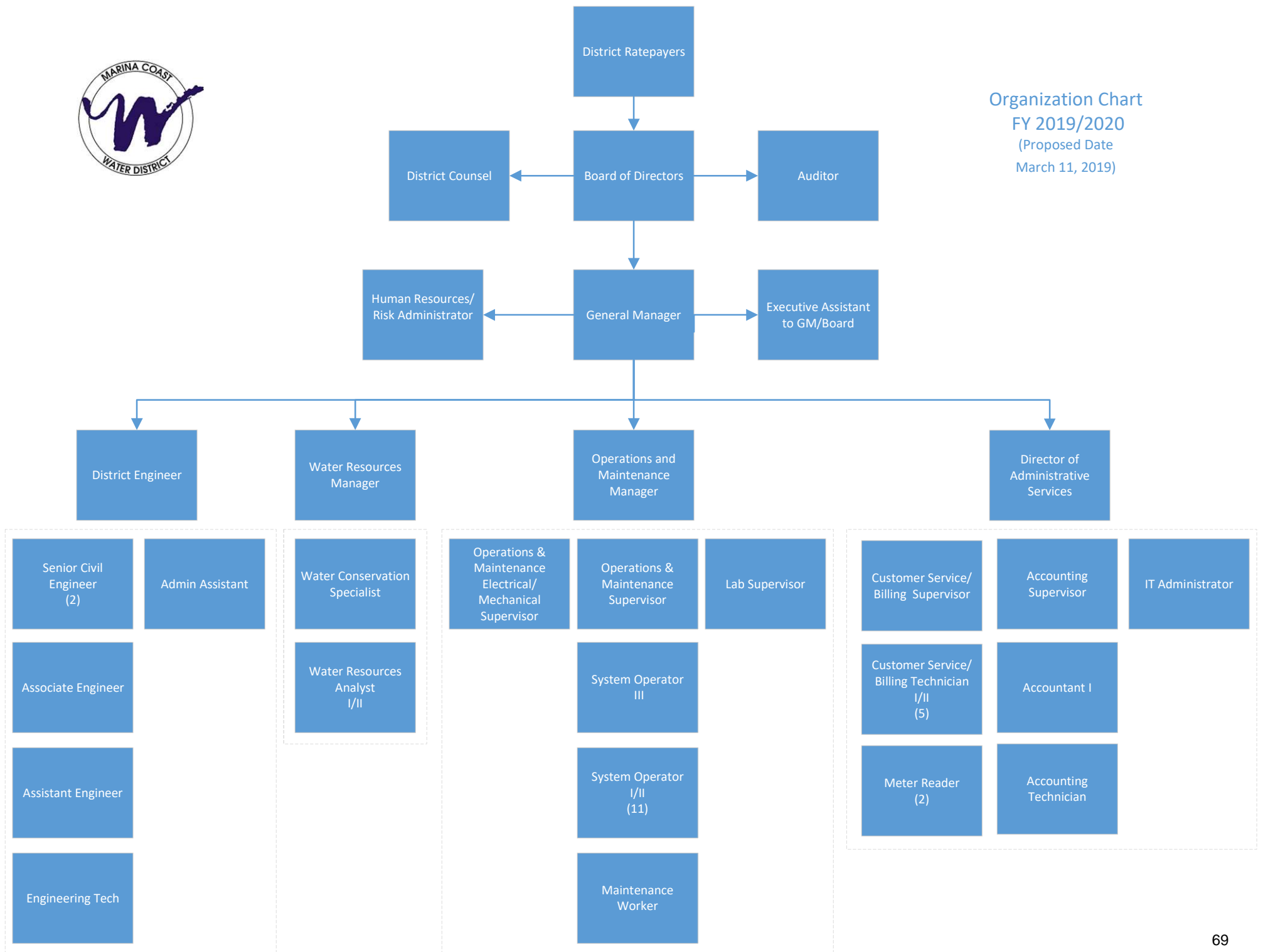
**MARINA COAST WATER DISTRICT  
DEBT SERVICE COVERAGE  
BUDGET FY 2019-2020**

	MW	MS	OW	OS	RW	RP	TOTAL
<b>GROSS REVENUES</b>							
Water sales	\$ 4,095,244	\$ -	\$ 7,649,670	\$ -	\$ -	\$ -	\$ 11,744,914
Sewer sales	-	1,441,786	-	2,963,074	-	-	4,404,861
Other water sales	-	-	9,756	-	-	-	9,756
Capacity/capital fee	416,750	284,905	1,999,290	717,588	-	-	3,418,533
Interest revenue	60,566	26,540	84,500	25,085	200	-	196,891
Other revenue	212,518	25,135	894,767	62,946	31,355	-	1,226,721
Grant revenue	153,132	-	303,758	-	-	-	456,890
Revenue adjustment	-	-	-	-	-	-	-
<b>Total gross revenues</b>	<b>\$ 4,938,210</b>	<b>\$ 1,778,366</b>	<b>\$ 10,941,741</b>	<b>\$ 3,768,694</b>	<b>\$ 31,555</b>	<b>\$ -</b>	<b>\$ 21,458,566</b>
<b>OPERATING EXPENSES</b>							
Salaries	1,664,244	544,930	3,671,883	992,910	-	-	6,873,967
Dept. expenses	1,867,727	202,891	4,017,715	632,961	1,200	-	6,722,494
Franchise & admin fees	-	-	485,864	175,700	-	-	661,564
Expense adjustment	-	-	-	-	-	-	-
<b>Total operating expenses</b>	<b>3,531,971</b>	<b>747,821</b>	<b>8,175,462</b>	<b>1,801,571</b>	<b>1,200</b>	<b>-</b>	<b>14,258,025</b>
<b>Net available revenues</b>	<b>1,406,239</b>	<b>1,030,546</b>	<b>2,766,280</b>	<b>1,967,122</b>	<b>30,355</b>	<b>-</b>	<b>7,200,541</b>
<b>2015 BOND COVERAGE REQUIREMENT - SENIOR DEBT</b>							
Debt service (principal)	79,600	49,750	477,600	159,200	228,850	-	995,000
Debt service (interest)	100,332	62,708	601,992	200,664	288,454	-	1,254,150
Debt coverage ratio (2015 bond)	7.82	9.16	2.56	5.47	0.06	0.00	3.20
Minimum coverage required (2015 bond)	1.25	1.25	1.25	1.25	1.25	0.00	1.25
<b>SANTA CRUZ COUNTY BANK LOAN COVERAGE REQUIREMENT - SENIOR DEBT</b>							
Debt service (principal)	24,303	6,944	43,399	12,152	-	-	86,797
Debt service (interest)	41,583	11,881	74,256	20,792	-	-	148,512
2015 Debt service + 1.25 covenant	224,915	140,573	1,349,490	449,830	646,630	-	2,811,438
Net revenues available for SCCB Loan	1,181,324	889,973	1,416,790	1,517,292	(616,275)	-	4,389,104
Debt coverage ratio (SCCB Loan)	17.93	47.28	12.04	46.06	0.00	0.00	18.65
Minimum coverage required (SCCB Loan)	1.25	1.25	1.25	1.25	-	-	1.25
<b>2010 BOND COVERAGE REQUIREMENT - SUBORDINATE DEBT</b>							
Debt service (principal)	485,800	138,800	867,500	242,900	-	-	1,735,000
Debt service (interest)	24,290	6,940	43,375	12,145	-	-	86,750
Senior Debt service + 1.25 covenant	307,273	164,103	1,496,558	491,009	646,630	-	3,105,574
Net revenues available for 2010 bond	1,098,966	866,442	1,269,722	1,476,113	(616,275)	-	4,094,967
Debt coverage ratio (2010 bond)	2.15	5.95	1.39	5.79	0.00	0.00	2.25
Minimum coverage required (2010 bond)	1.10	1.10	1.10	1.10	0.00	0.00	1.10





Organization Chart  
 FY 2019/2020  
 (Proposed Date  
 March 11, 2019)



**Marina Coast Water District**  
**Authorized and Proposed Staff Positions and Salary Range Schedule**  
**For FY 2019-2020**

<u>Job Title</u>	<u>Department</u>	<u>Authorized Position(s)</u>	<u>Funded Position(s)</u>	<u>Approved Salary Range</u>
<b>Authorized &amp; Funded</b>				
General Manager	Administration	1	1	Contract
Director of Administrative Services	Administration	1	1	Range T41
Human Resources/Risk Administrator	Administration	1	1	Range U32
Executive Assistant to GM/Board	Administration	1	1	Range T21
IT Administrator	Administration	1	1	Range T29
Accounting Supervisor	Administration	1	1	Range 31
Accountant I	Administration	1	1	Range 17
Accounting Technician	Administration	1	1	Range 13
Customer Service/Billing Supervisor	Administration	1	1	Range 28
Customer Service/Billing Technician II	Administration	4	4	Range 10
Customer Service/Billing Technician I	Administration	0	1	Range 6
Meter Reader	Administration	2	2	Range 8
Water Conservation Specialist III	Conservation	1	1	Range 23
District Engineer	Engineering	1	1	Range T44
Senior Civil Engineer	Engineering	2	2	Range T33
Associate Engineer	Engineering	1	1	Range T29
Assistant Engineer	Engineering	1	1	Range 21
Administrative Assistant	Engineering	1	1	Range 14
Lab Supervisor	Laboratory	1	1	Range 29
O&M Manager	Oper & Maint	1	1	Range T37
O&M Supervisor	Oper & Maint	1	1	Range 30
Electrical/Mechanical O&M Superviosr	Oper & Maint	1	1	Range 30
System Operator III	Oper & Maint	1	1	Range 23
System Operator II	Oper & Maint	8	8	Range 19
System Operator I	Oper & Maint	3	3	Range 15
Utility Laborer	Oper & Maint	1	1	Range 8
Water Resources Manager	Water Resources	1	1	Range T34
Water Resources Analyst I/II	Water Resources	1	1	Range 10
Total Authorized & Funded		41	42	
<b>Authorized but not Funded</b>				
Accountant II	Administration	1	0	Range 27
District Counsel	Administration	1	0	Range U49
Director of Finance	Administration	1	0	Range T27
Management Services Administrator	Administration	1	0	Range U34
HR/Customer Relations Manager	Administration	1	0	Range U37
Water Conservation Coordinator	Conservation	1	0	Range T20
Deputy General Manager/District Engineer	Engineering	1	0	Range U49
Project Manager	Engineering	1	0	Range T31
Engineering Technician	Engineering	1	0	Range 14
Water Quality Manager	Laboratory	1	0	Range T27
Total Authorized but not Funded		9	0	
<b>Total Positions</b>		<b>50</b>	<b>42</b>	