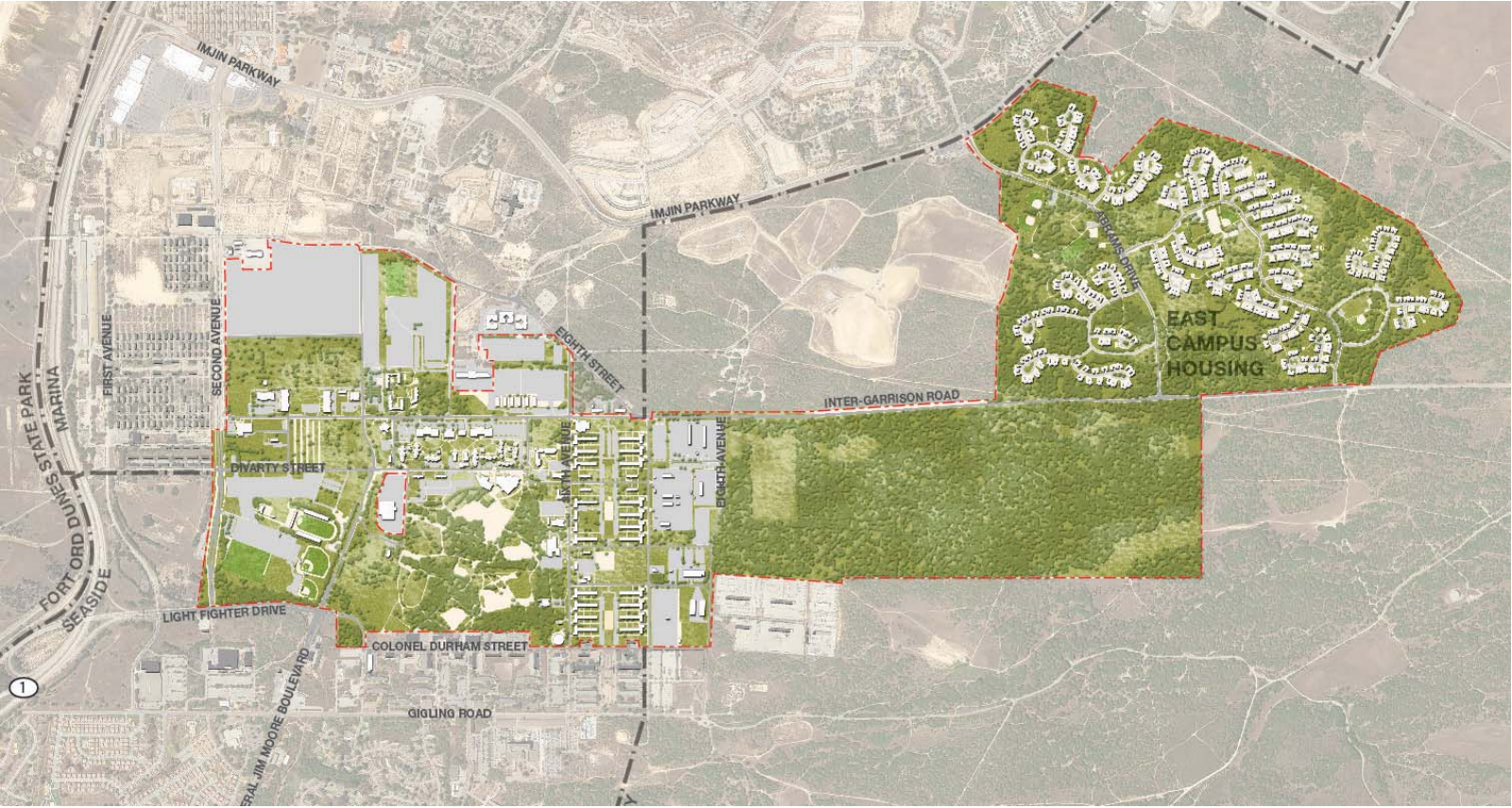






# Master Plan Drivers

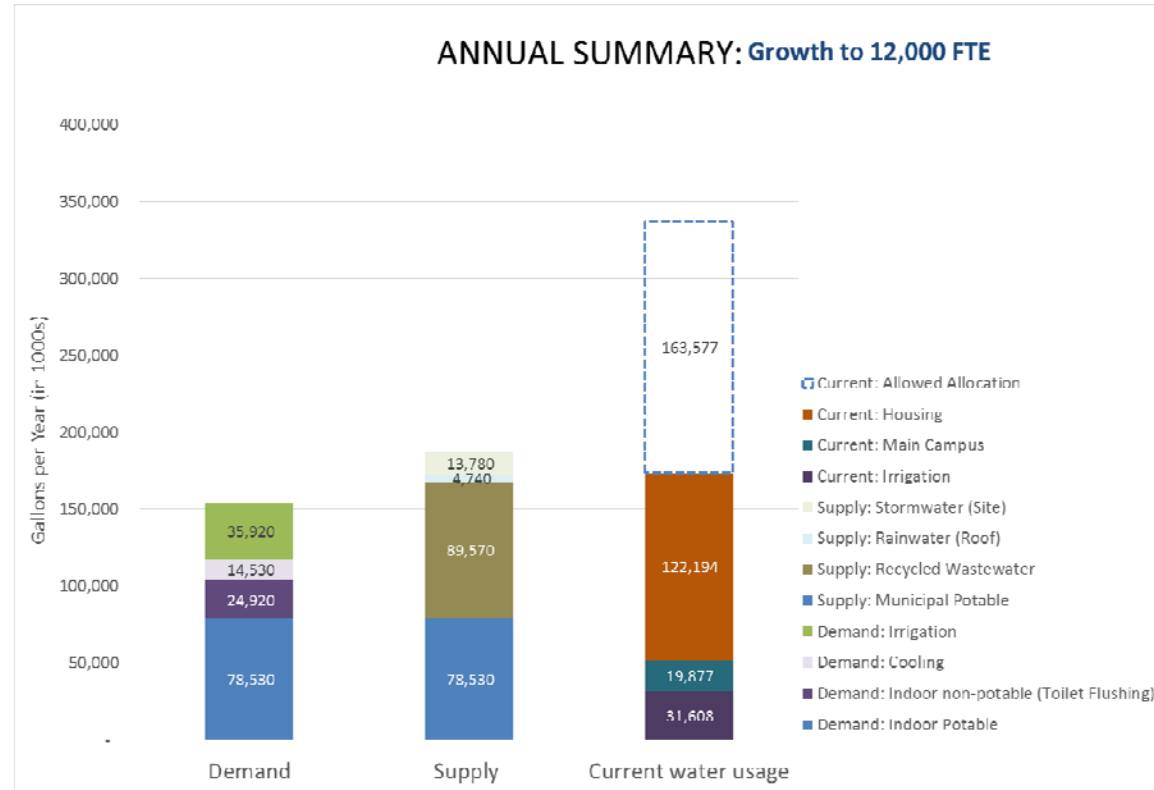


# Accommodating Growth

Accommodate Growth to 12,000 students

## Considerations:

- Program accommodation
- Existing vs. new construction
- Campus form and character
- Meeting sustainability goals
- Decreasing and reusing water onsite
- Renewable energy generation
- Alternative transportation
- Funding
- Local and regional economic development opportunities



# On-Campus Housing

Accommodate at least 60% of students on campus

## Considerations:

- **Housing types**
- **Implementation strategies: public private partnerships**
- **Land areas and density**
- **Location and relationship to campus facilities**
- **Design and function of residential communities**
- **On site amenities**
- **Living/learning strategies**
- **Non-auto centric living – bike storage, separated pathways links throughout campus and to community, transit and car share access**



# Student Success

Support academic mission and goals of strategic plan for student success

## Considerations:

- **Quality of indoor and outdoor teaching and learning facilities**
- **Student life facilities for residents and commuters**
- **Campus appeal and functionality**
- **Relation to surrounding communities, amenities, natural environment and activities**
- **Regional / campus accessibility for those with all mobility levels including bicycle/pedestrian and transit connections**
- **Student support**



# Sustainability

2013 Climate Action Plan to reach  
ACUPCC 2030 carbon neutrality goal  
Water budget  
TDM requirement

## Considerations:

- Further refinement of goals and aspirations
- Implement and update Climate Action Plan
- Regional and CSU model

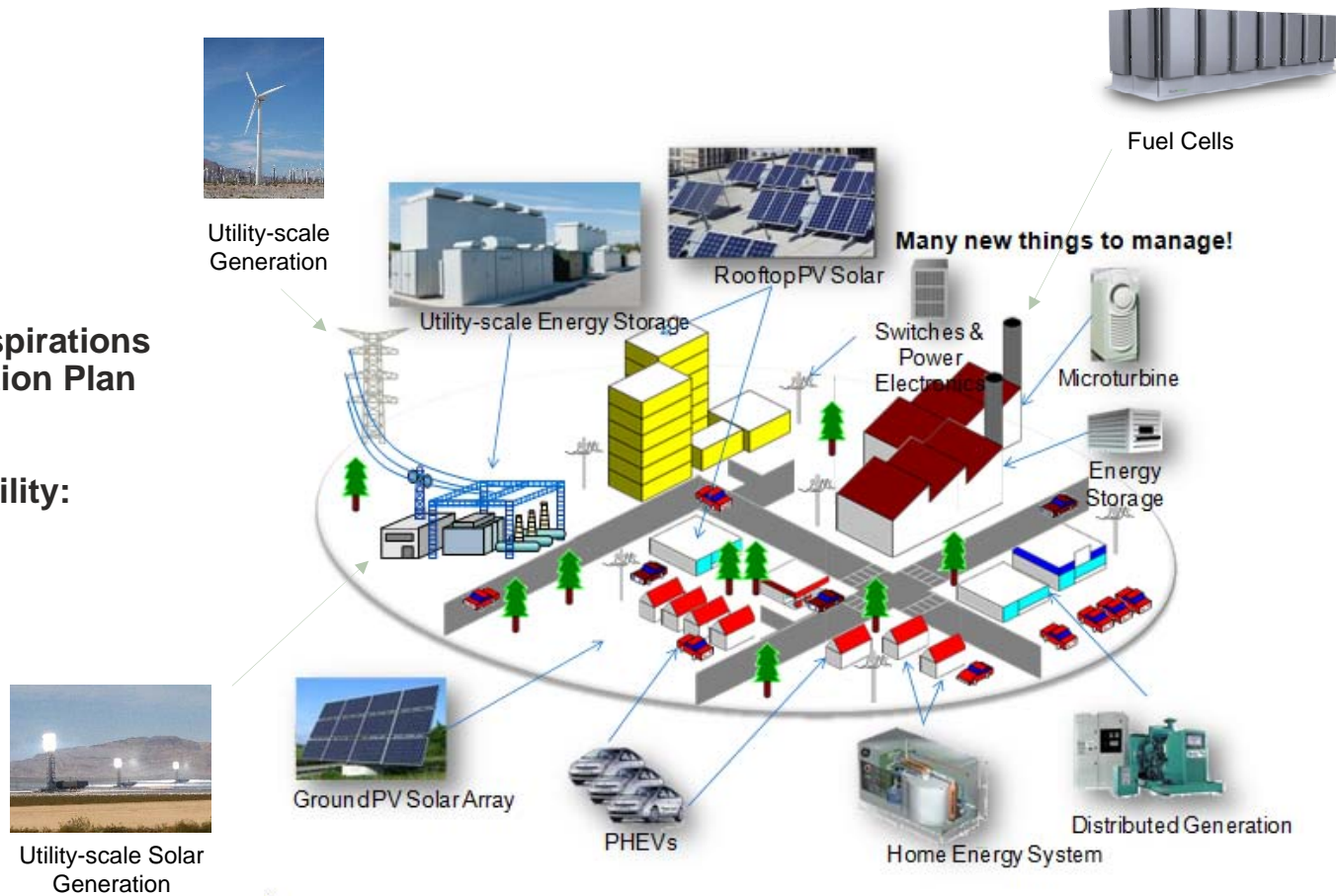
## Consider all dimensions of sustainability:

### 1. Environment

- Transportation
- Waste
- Water
- Energy
- Built environment
- Habitat management

### 2. Social inclusivity

### 3. Economics



# Quality of Campus Environment

## Placemaking

Campus quality and character

### Considerations:

- Conservation and environmental stewardship
- Base-wide Multi-Species Habitat Conservation Plan
- FORTAG connection between beach and back country
- Entries, edges and campus image
- Using design guidelines to enhance campus setting
- Create a 21st Century setting for teaching, learning and research
- CSUMB as a regional asset for:
  - Education
  - Economic growth and job creation
  - Environments that teach
  - Connection to open space
  - Recreation
  - Arts and entertainment



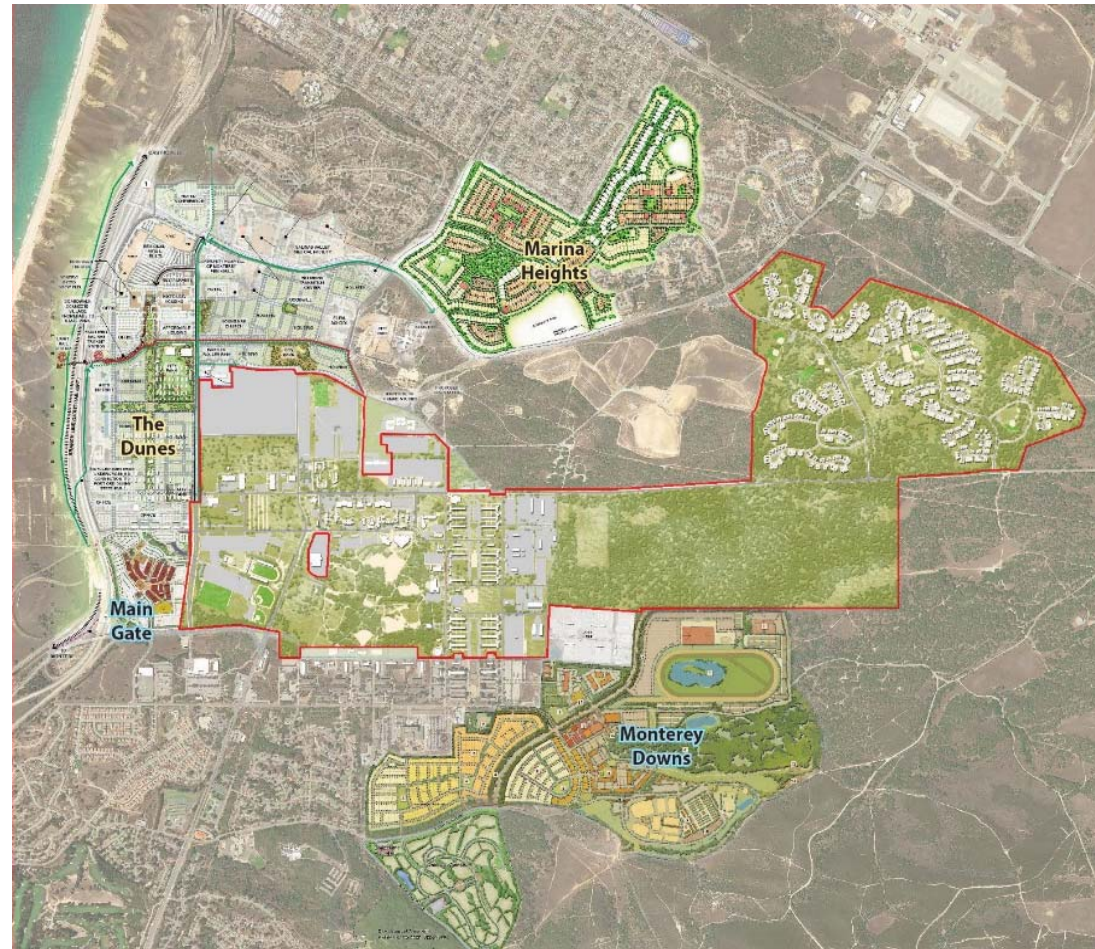


# Community Context

## Cooperation with Regional Agencies and Jurisdictions

### Considerations:

- Continuing cooperative relationships
- CSUMB role in supporting economic development and jobs creation
- CSUMB as regional model of sustainability.
- Regional Urban Design Guidelines development and consideration
- Showcase Transportation Demand Management policies, programs and physical improvements.
- Student amenities and services on site and in the surrounding communities



# Phasing, Financing, and Economic Development

Campus development financing models  
Of-site partnerships and cooperation

## Considerations:

- Funding campus growth in a declining resource environment
- Roles for philanthropy
- Public/private partnerships (P3) for campus facilities and infrastructure
- CSUMB role in supporting economic development and jobs creation
- Regional partnerships
- Campus-based initiatives



# Community Outreach



## Master Plan Committees

- Steering
- Design Review
- Space Management
- Sustainability
- Transportation

## On-Campus Engagement

- Forums for students, faculty and staff
- Design workshops

Interactive Map – [csumb.edu/masterplan](http://csumb.edu/masterplan)

## External Community Engagement

- Planned workshops and forums
- Outreach local jurisdictions, FORA, MCWD, TAMC, MST, UCSC, MPC and others

# Current Work

Space Utilization and Projections

Building Quality and Condition

Land Areas and Development  
Pattern for Future Growth

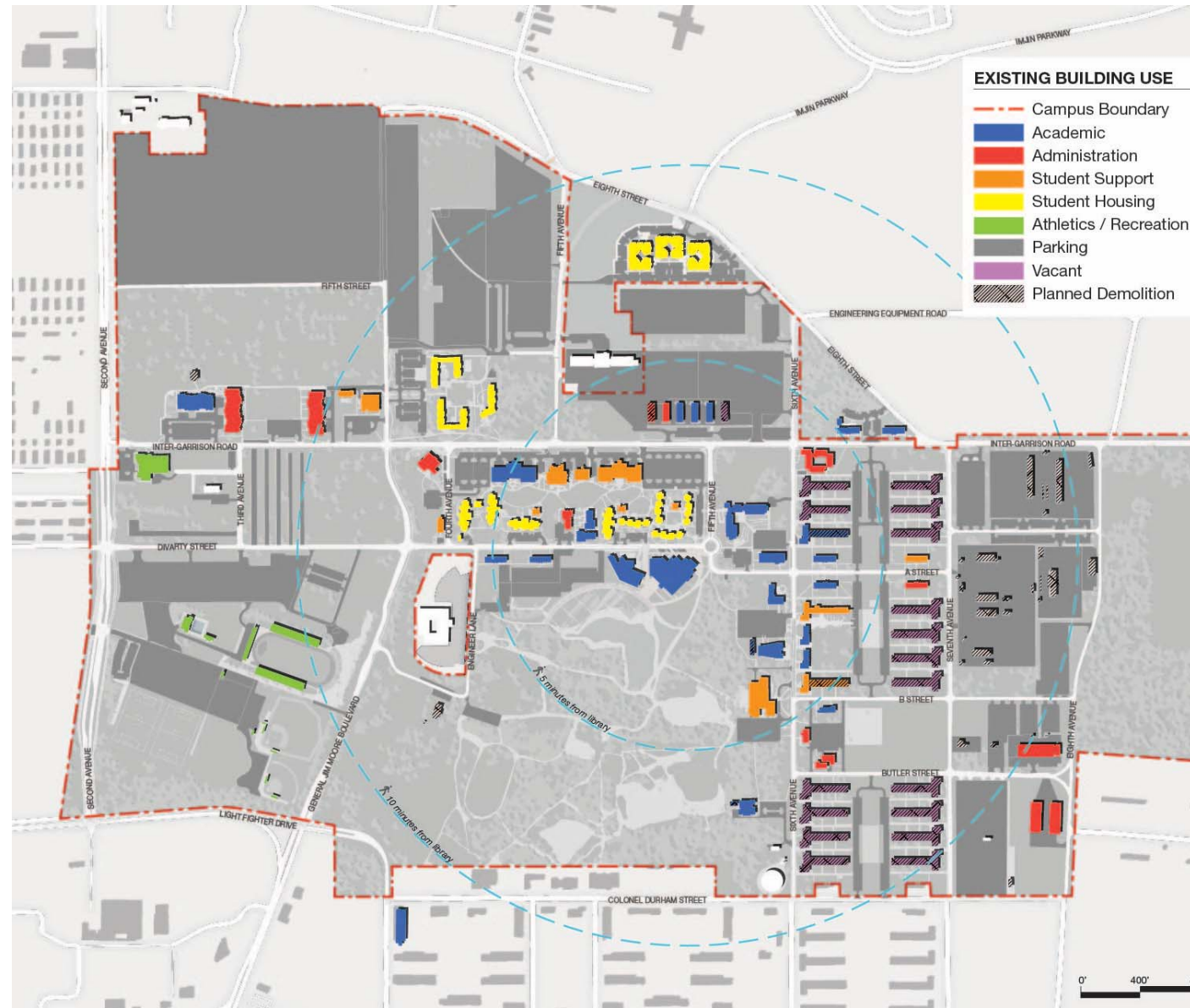
Circulation Framework Options

Parking Analysis

Infrastructure Assessments

Sustainability Goal Development

Habitat Data Collection



# CSU Monterey Bay Master Plan

