

Fort Ord Reuse: Economic Recovery Status

October 14, 2016

Josh Metz

Economic Development Manager

Overview

- Strategy
- Progress
- Openings
- Partnerships
- Initiatives



Strategy

- **Build** on regional strengths
- **Engage** stakeholders
- **Develop & maintain** information resources
- **Pursue** new business opportunities
- **Engage** with regional partners
- **Report** progress



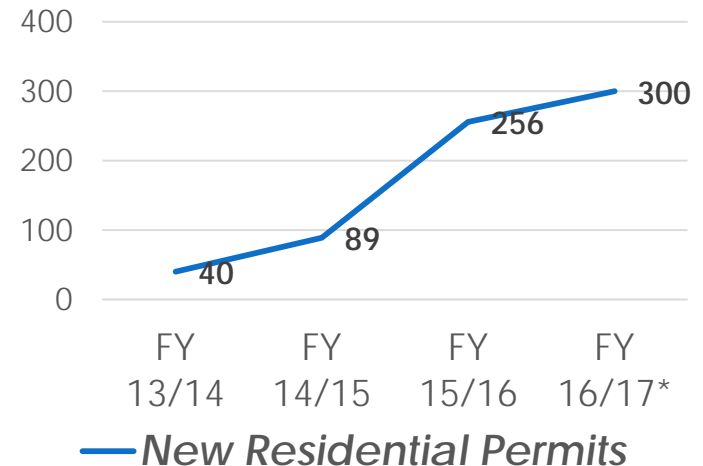
Reuse Progress

Base Reuse Plan Projections

- **37,000** Replacement Population
- **18,000 Jobs** to Replace Military Employment
- **11,000 Homes** (6,160 New Units)
- Supporting Commercial Development (~3M sq. ft.)
- Balanced Development ensuring **Economic** and **Educational** Opportunities with **Environmental** Preservation

Former Fort Ord Today

- **14,200** Population
- ~**4,200 jobs** (3541 FTE/722 PT)
- **4,000** replacement/rehab housing units, ~**1000 new units**
- **660K sq. ft** commercial



Veterans Cemetery



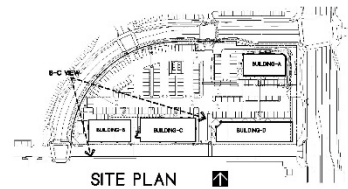
Phase 1 Opening Ceremony, October 11, 2016

VA/DoD Clinic



Joint VA/DoD General Gourley Clinic
Ribbon Cutting, October 14, 2016

Shops at the Dunes



SITE PERSPECTIVE B-C

Attachment 2 to Item 1th
FCM Board Meeting, 10/27/16

▲	
▲	
▲	



Wilder Innes
ASSOCIATES, INC.

4120 N. 2nd, Suite 11
Portland, OR 97217
(503) 251-2000

DATE: JUN. 16, 2016
JOB: 16-000

A-II
SMBTS

Planned Opening, November 2016

Marriott Springhill Suites



Planned Opening, Fall/Winter 2016

Cypress Knolls



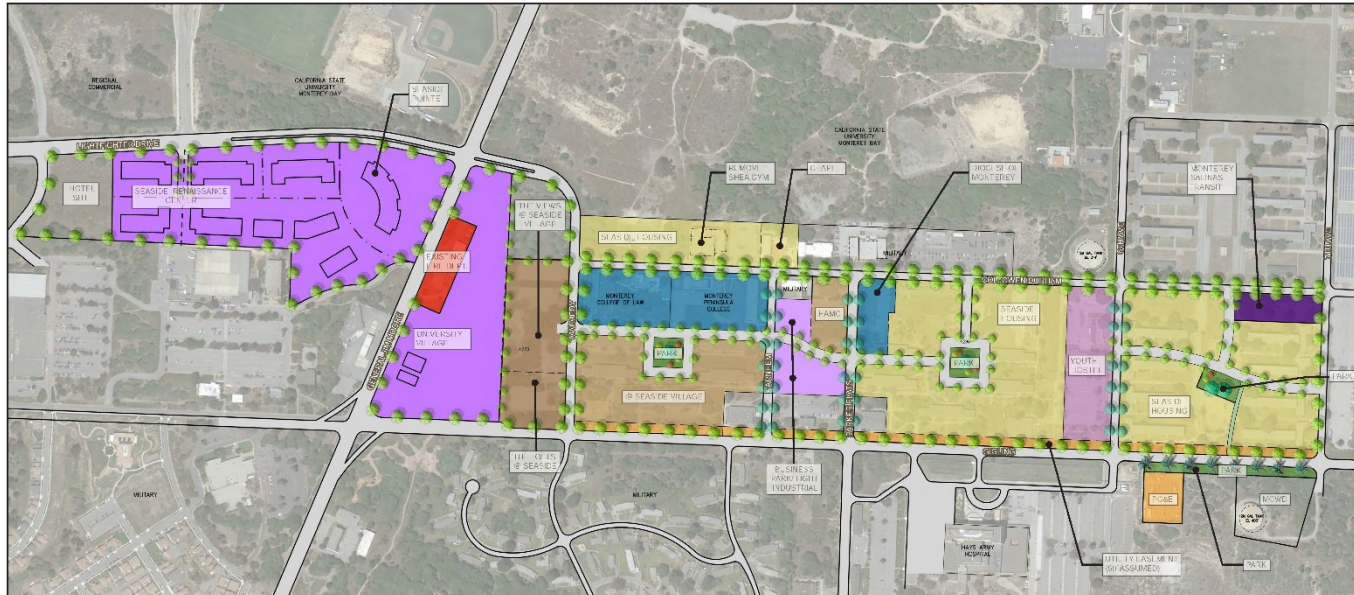
September 20, 2016 Marina City Council Items

Main Gate RFP



December 5, 2016 Submittal Deadline

Surplus II



- | | | | |
|---|--------------------------------|--------------------------|-----------------------------------|
| RS-8 - SINGLE FAMILY RESIDENTIAL | CRG - REGIONAL COMMERCIAL | PACIFIC GAS AND ELECTRIC | PI - PUBLIC / INSTITUTIONAL |
| RS-12 - SINGLE FAMILY RESIDENTIAL | AMERICAN YOUTH HOSTEL | CSUMB | OSR - OPEN SPACE - RECREATION |
| RM - MEDIUM DENSITY RESIDENTIAL (SFWORKS) | MONTEREY SALINAS TRANSIT (MST) | FIRE DEPARTMENT | HOUSING AUTHORITY MONTEREY COUNTY |

SURPLUS II, SEASIDE, CA
KB - BAKEWELL SEASIDE VENTURES, LLC.

CONCEPTUAL LAND USE EXHIBIT



JOB NO. 464 014
DATE 01-30-2014
6865 Owens Drive
Petaluma, CA 94958
625-251-7200
A.1

Seaside University Center (Surplus II)



Monterey Bay Education, Science, and Technology Center of the University of California, Santa Cruz



UC Monterey Bay Education, Science and Technology Center (UCMBEST)

Coworking Study

- FORA-iiED CSUMB
- Market Feasibility
- Survey (Sept 2016)
- Case Studies
- Market Analysis
- Recommendations
- ***Imminent release on FORA website pending final edits***



- **Key findings:**
 - Fast growing market
 - Few Salinas-Peninsula providers
 - 67% interest (99 respondents)
 - Prefer 10-30 min drive

Business Recruitment/Retention



Food/dietary supplements
New production facility in Salinas
\$6M in annual sales



Partnerships: CSUMB



Current enrollment: **7,100** FTE
Projected 2020: **12,500** FTE
Future cap: **25,000** FTE



<http://startupmontereybay.org/>
6 years old (2011-2016)
370 companies | 130 finalists
\$350k supporting funds awarded

Partnerships: MBEP



Workforce Development
Committee



Strengthening Career
Pathways



State of the Region Event
Embassy Suites, Seaside
December 1, 2016



SALINAS, California

The World's
AgTech Hub

#1 PRODUCER OF FRESH FOOD IN THE U.S.



\$9 BILLION
AGRICULTURE INDUSTRY

60% of the nation's
leafy greens

30% of the nation's
strawberries



#1 producer of Pinot Noir grapes in California
#2 producer of Chardonnay grapes in California
Cultivates **43K ACRES** of grapes,
1k acres fewer than Napa



Feeding the World: EXPORTS

435 million pounds of lettuce

80 million pounds of broccoli

61 million pounds of strawberries




Smart Farming
Epicenter.


Bringing together innovation in:

 Farming

 Technology

 Sustainability

 Water

 Energy



www.businessinsalinas.com

Questions?



Josh Metz

Economic Development Manager

[**josh@fora.org**](mailto:josh@fora.org)

@OrdForward

(831) 883-3672