

Fort Ord Regional Trails Planning

FORA Board
July 11, 2014

Josh Metz, Associate Planner

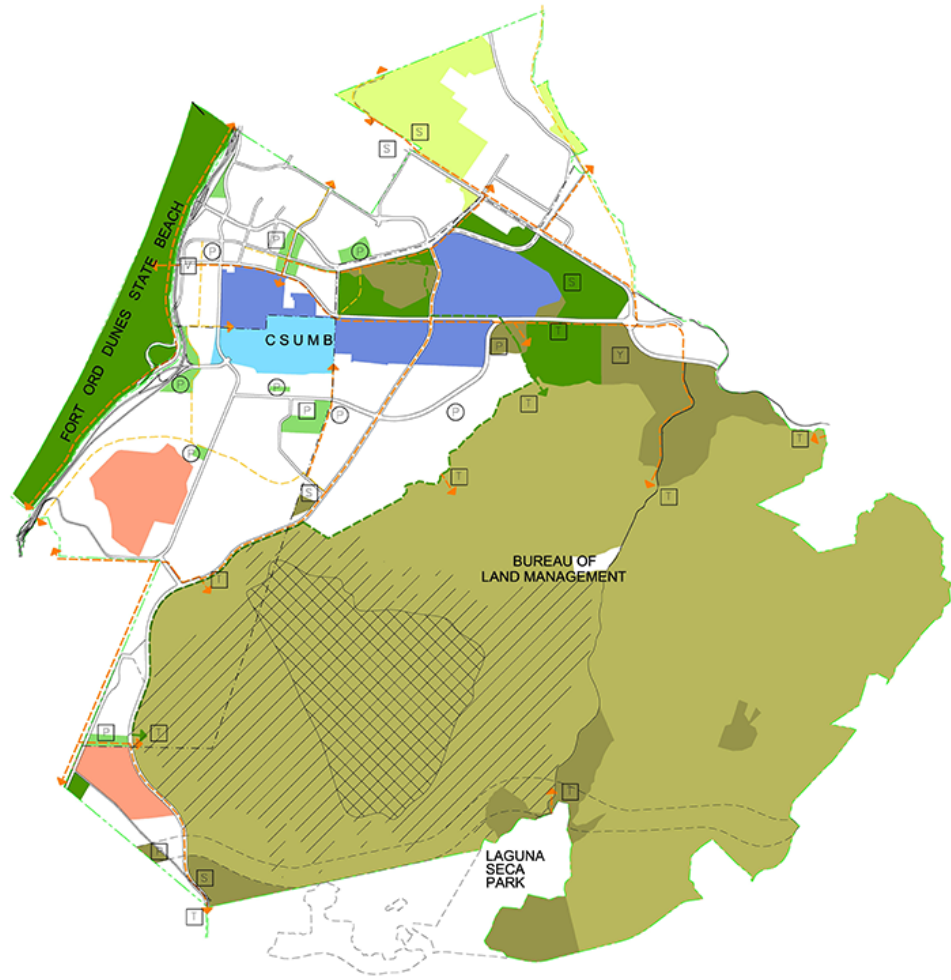


- Reuse Plan trails planning context
- Trails planning in FORA jurisdictions and related entities
- Trail Economics
- Coordination /Recommendations

- Provide ***connections to non-motorized transportation alternatives to all neighborhoods***
- Use ***recreation and open space assets to make the former Fort Ord attractive*** to potential users by ***interconnecting and increasing access***
- ***Adequate ROW should be reserved*** along planned transportation corridors
- The Fort Ord trails system ***shall be considered as an integral part of a larger regional trails network*** and ***shall*** be linked to regional bike/pedestrian trails wherever possible

- **Major Trails:** Regional function, connecting non-motorized & foot traffic to areas outside Fort Ord
 - 12' minimum width
 - Asphalt or concrete
- Intergarrison
- Fort Ord Dunes State Beach
- Salinas Valley/Seaside
- **Minor Trails:** *less critical role, distributing and collecting traffic to and from neighborhoods along lower volume routes*
 - 10' minimum width
 - Asphalt or concrete
- Monterey Road
- Main Garrison
- Crescent Avenue
- Reservation Road

BRP Open Space & Recreation Framework



FORT ORD REUSE PLAN

Fort Ord Reuse Authority (FORA)

Land Planning	EDAW, Inc.
Market Analysis	EMC Planning Group, Inc.
Transportation Engineering	Sawley Kohn Mowday Group
Civil Engineering	JHK and Associates
Fiscal Analysis	Reimer Associates
Habitat Planning	Angus McDonald Associates
Public Communications	Zander Associates
Community Development	The Ingram Group
	Resource Corps International

LEGEND:

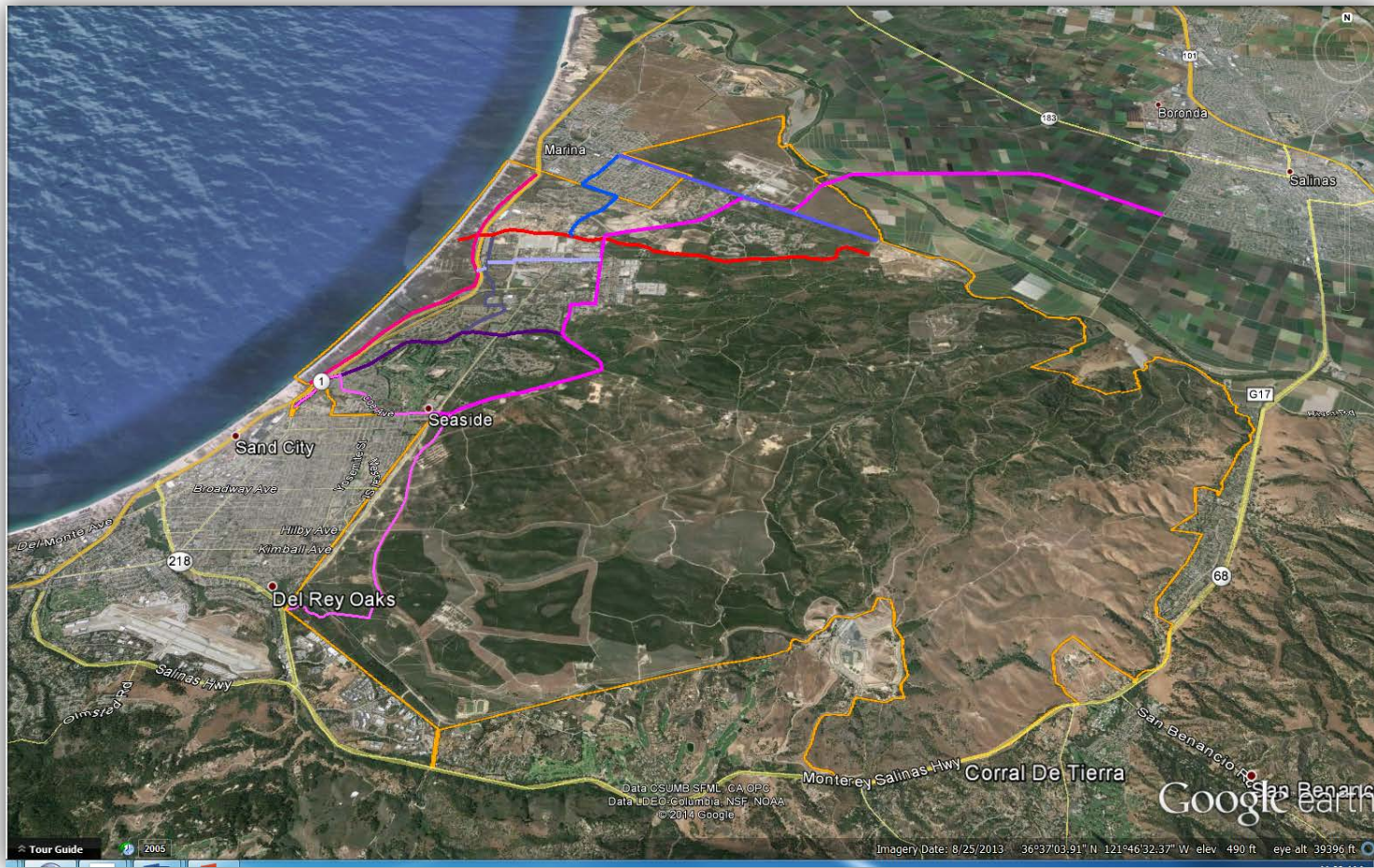
- Bureau or Land Management Lands
- Limited Access
- Restricted Access
- California State Parks
- CSUMB Campus
- Other Public Open Space - Recreation-Oriented
- Other Public Open Space - Habitat Management
- Commercial Recreation
- Jurisdiction Boundaries
- Regional Hiker/Biker Trail
- Local Hiker/Biker Trail
- Equestrian Trail
- Neighborhood Park
- Community Park
- Golf Course Opportunity Site
- Equestrian Center Opportunity Site
- Visitor/Cultural Center
- Trailhead
- Environmental Education
- Youth Camp

SHEET TITLE:

OPEN SPACE & RECREATION FRAMEWORK

	SOURCE: Jones & Street, 1995	FRAME: 3.6-3
	PARTIAL ADAPTATION: (Un)Proposed, 1995	Monterey County, 1995 EDAW, Inc., 1996

DRAFT Regional Trail Network Map





Today's Working Definition of Trails:

Passage way or designated route for pedestrian, bicycle, equestrian, and/or other non-vehicular use. Includes paved, unpaved, urban, & rural routes. Requires entity maintenance & liability coverage.

• **Land Use Jurisdictions**

- City of Marina
- City of Seaside
- Monterey County (FORHA)
- City of Monterey
- City of Del Rey Oaks/MC Regional Parks

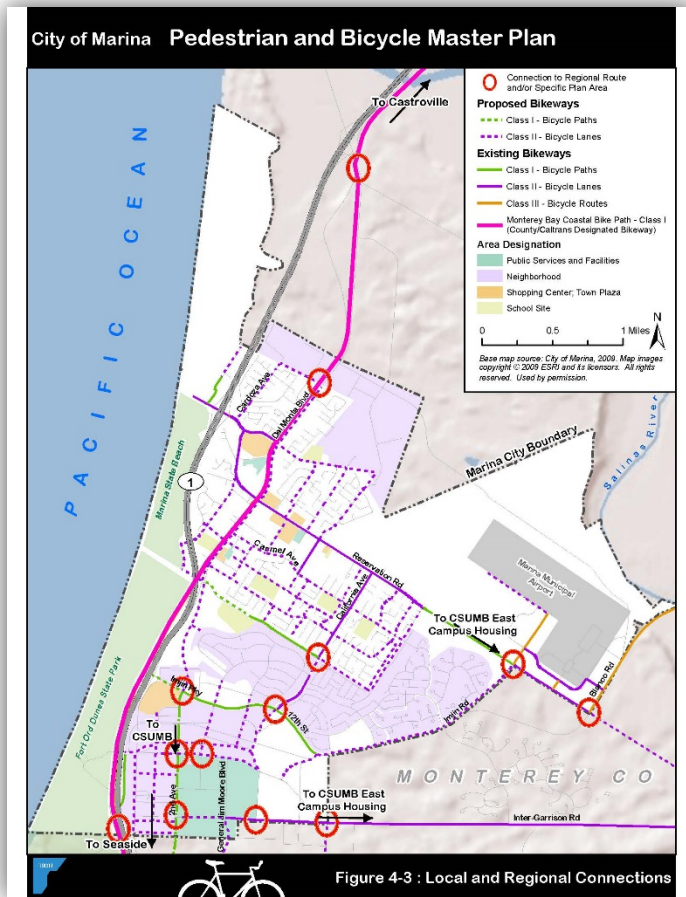
• **Federal/State**

- BLM
- CSUMB
- CA State Parks

• **Cross-Jurisdictional**

- Monterey Bay Sanctuary Scenic Trail Network (MBSSTN)
- Fort Ord Recreational Trail and Greenway (FORTAG)
- Peninsula Regional Planning

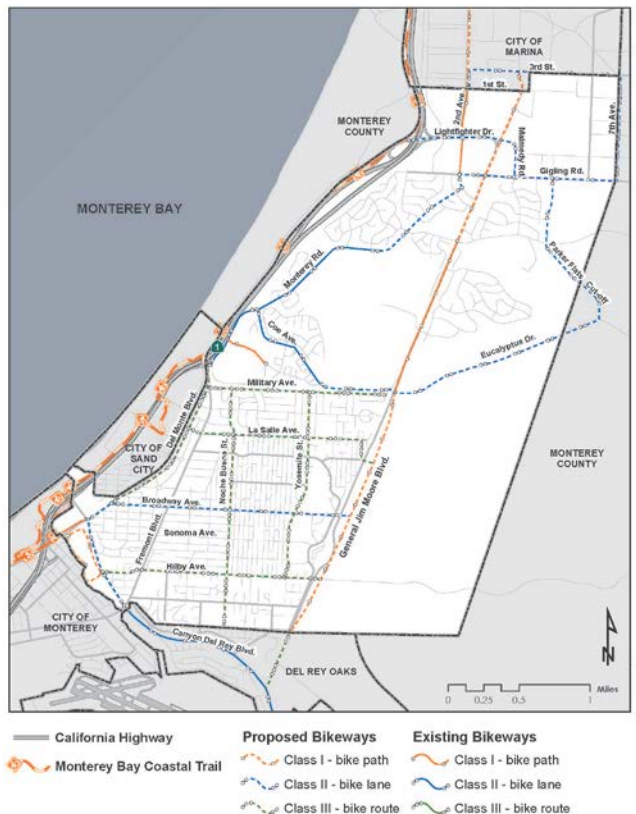
City of Marina



- City of Marina Pedestrian & Bicycle Master Plan
 - Circulation
 - Recreation (Class 1)
- Approved by City Council, Feb 2, 2010
- Amends General Plan
- FORA Consistency (2010)
- Incorporates entitled Fort Ord projects
- Includes design guidelines

City of Seaside

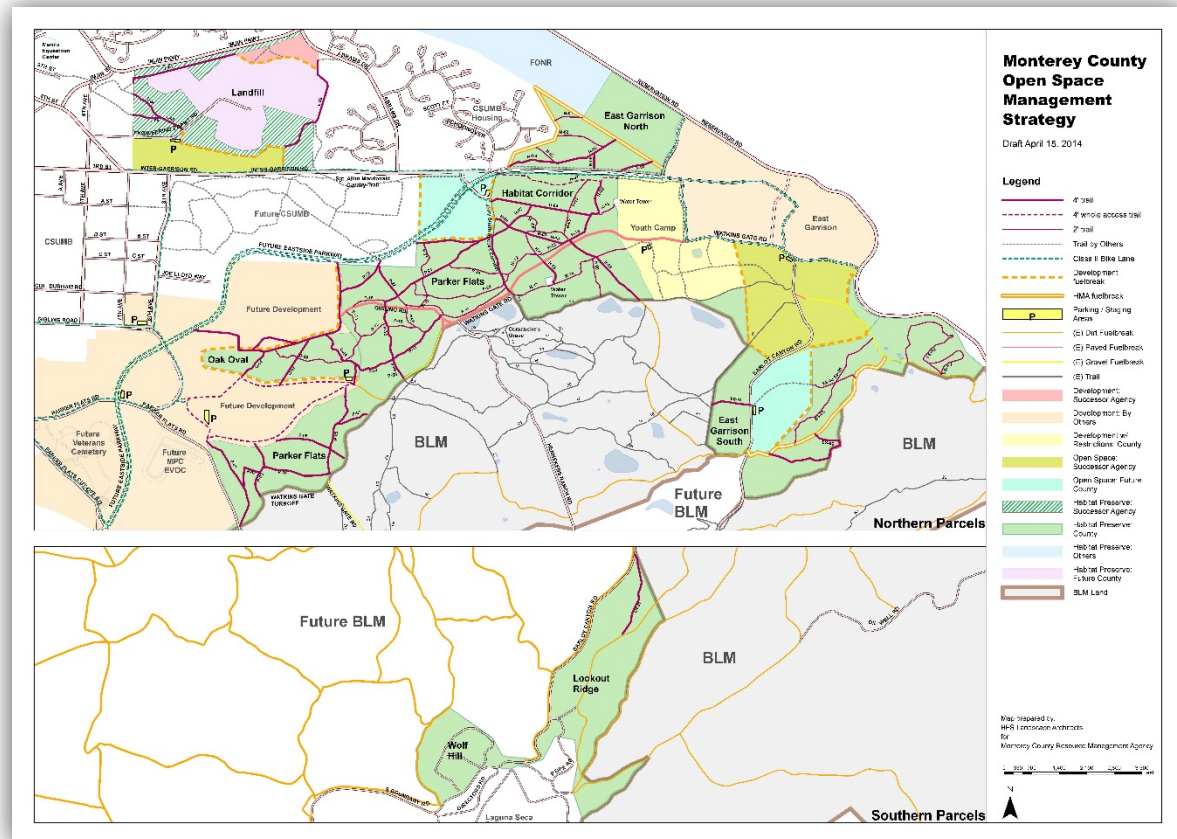
Figure 4: Existing and Proposed Bikeways



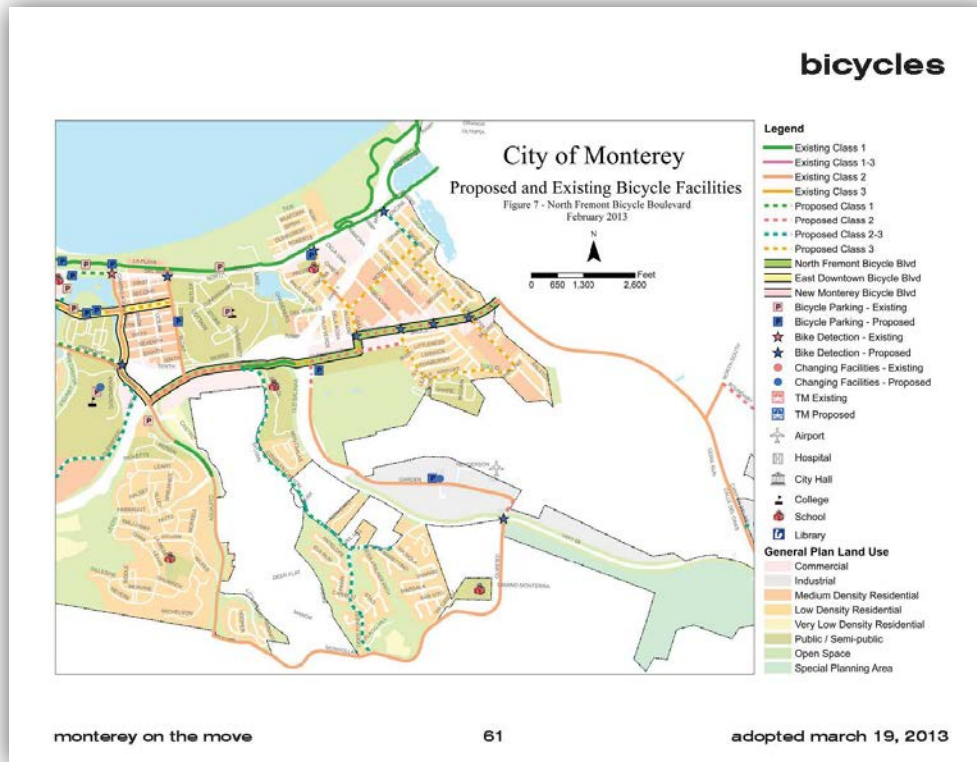
- Existing bikeways map in Seaside General Plan
 - Update process underway
 - *Circulation*
 - *Recreation*
- FORA Consistency (2004)
- Identifies bike routes throughout city
- Links to CSUMB and Coastal Trail

Monterey County

- Fort Ord Recreational Habitat Area Master Plan
- Trails network & habitat management planning
- Bellinger-Foster-Steinmetz
- [Map Link](#)



City of Monterey



Monterey on the Move

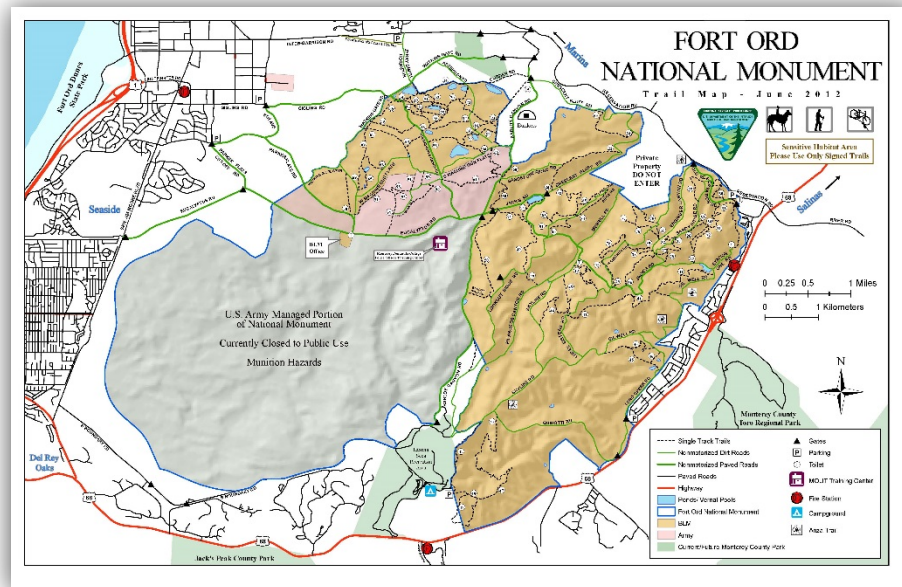
- Multi-modal Transportation Plan
 - *Circulation*
 - *Recreation*
 - Adopted by City Council 3/19/13
- Bike / Pedestrian focus

City of Del Rey Oaks /MC Regional Parks



- *Preliminary Frog Pond concept work in Del Rey Oaks*
- No further action to date
- Future collaboration & planning with City

Bureau of Land Management (BLM)



[Link to maps](#)

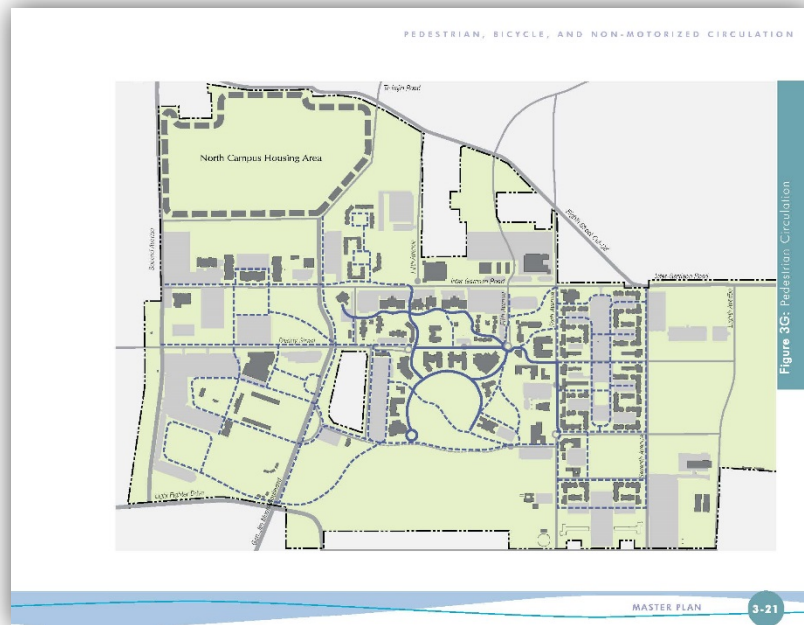
- 40 miles of “administrative” roads
 - Fire break
 - Vegetation management
- 46 miles of recreational trail
 - Multi-use
 - Segregated uses
- Current issues: signage, trail head quality, & maintenance

California State Parks



- *Tentative trail routes on Fort Ord Dunes State Park*
- Final routing subject to change
- Timeline: 2-5yrs
- Funding & permit dependent

CSU Monterey Bay – Master Plan



- *CSUMB Master Plan*
- *Pedestrian / bicycle focus*
- *Preliminary trail concept under development*
- *Connecting students to:*
 - *Fort Ord Dunes State Park*
 - *East Campus Housing*
 - *National Monument*

CSU Monterey Bay: Trip Wise



- Regional bikeways
- Routing through CSUMB, Marina & Seaside
- Update pending late-2014/ early-2015

Transportation Agency of Monterey County (TAMC)

Chapter 2| Existing Conditions

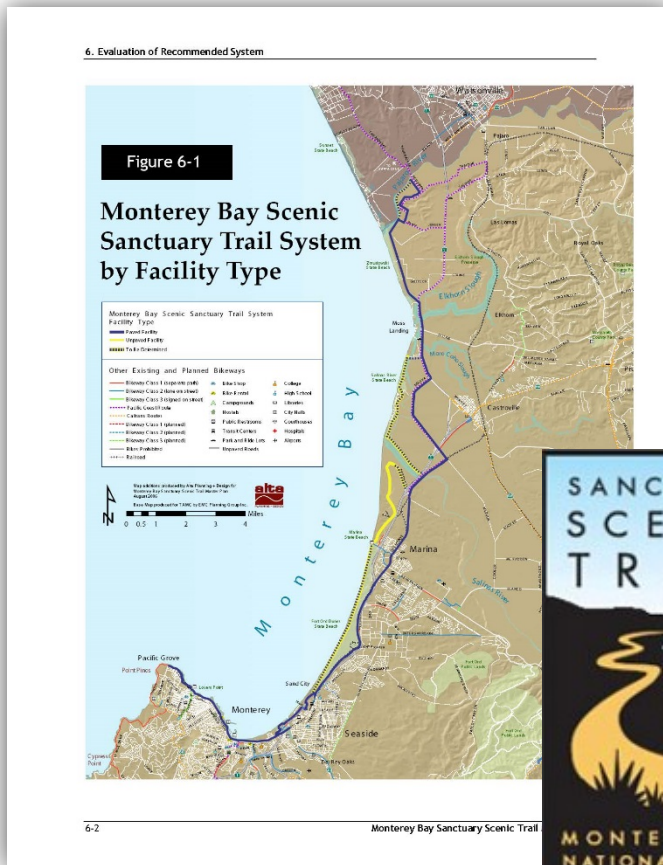


Figure 2-6: Existing Bicycle Network Monterey Bay Area

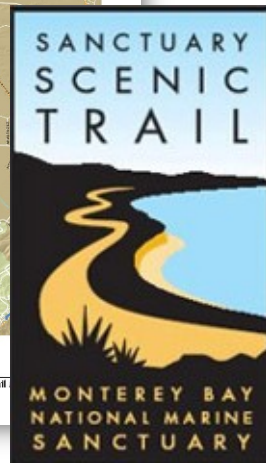
2-12 | Alta Planning + Design

2011 Bike & Pedestrian Master Plan

Monterey Bay Sanctuary Scenic Trail Network

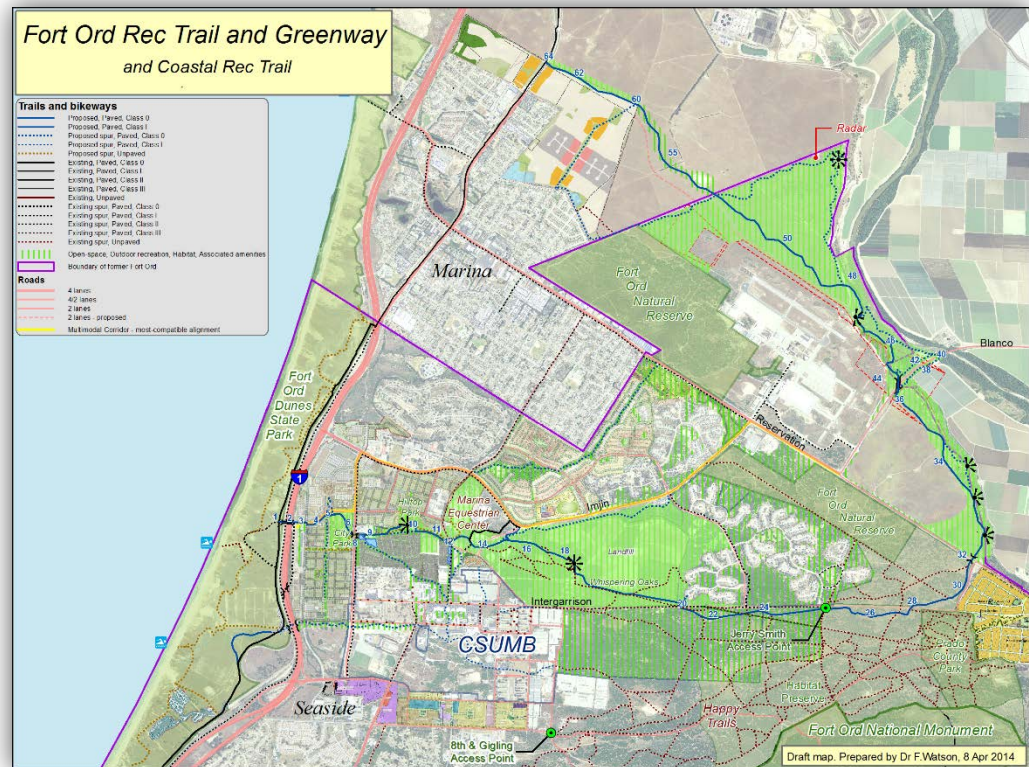


- Collaborative effort to construct a trail spanning the Monterey bay
- Began in 2000 at State Legislature
- **TAMC Master Plan completed in 2008**
- Major State & regional trail linkage

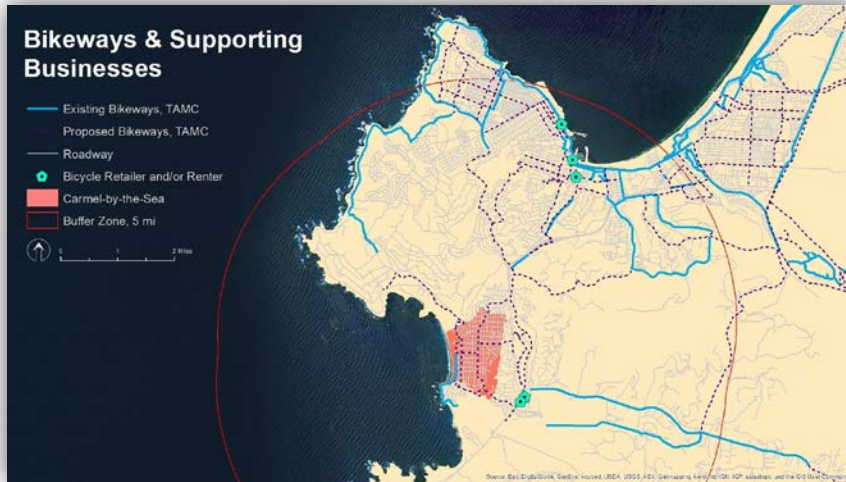


Preliminary Concept : Fort Ord Rec Trail & Greenway (FORTAG)

- Planning stages
- Phase 1: 9.6 Mile Northern Loop
 - *Coastal Trail-East Garrison-Marina*
- Phase 2: Southern Arm
 - *Coastal Trail – Seaside- DRO*
- Contacts:
 - Fred Watson, CSUMB
 - Scott Waltz, CSUMB
 - Gail Morton, Marina



Peninsula Regional trail connections



- Beginning focus - Carmel & Peninsula
- Carmel north to the Salinas River
- Planning / tourism oriented
- Victoria Beach, Carmel-by-the-Sea / CSUMB Faculty & student led

Coordination Meetings:

- CSUMB
- City of Marina
- City of Seaside
- Administrative Committee
- Post-Reassessment Advisory Committee

Recommendations:

- **Continue to serve as regional hub for trail planning**
- **Incorporate Trail Planning into RUDG Process**